

CREDITS



DIRECTOR
SCENARIO WRITER
GRAPHIC SUPERVISOR

N · NAKAZATO

PROGRAMMERS

MAIN PROGRAM

MIYAOKA ♪ KENJI

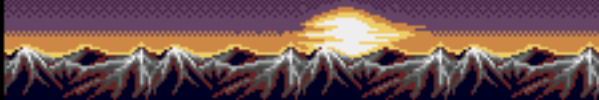


ENEMY PROGRAM

TAKEDA ☆ TAKASHI

ENEMY PROGRAM

HAMADA, HIDEKI

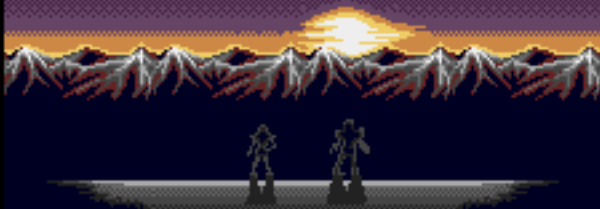


ENEMY PROGRAM

K · KARASAWA

HELP MAN

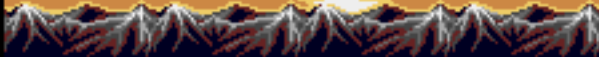
KENICHIRO HORIO



DESIGN WORKS

NICE GUY

S · SHIMAMURA



BIKE MAN

K · SUZUKI

A pixelated landscape scene. At the top, a small yellow airplane flies across a purple sky. Below it, a bright sun sets behind a range of jagged, snow-capped mountains. The foreground shows two small, dark figures standing on a flat ground. The overall style is reminiscent of early computer graphics.

SOUND WORKS

H · DEVI KOBAYASHI

AKIROPITO

MIYAOKA ♪ KENJI

CHIRU2 YAMANE

GAJOKAI

NITACHIGU

A pixelated landscape scene. At the top, a small yellow airplane flies across a purple sky. Below it, a bright sun is partially obscured by a range of jagged, snow-capped mountains. The sky transitions from purple to orange near the sun. In the foreground, two small, dark figures stand on a flat, greyish ground. The overall style is reminiscent of early computer graphics or video game titles.

PACKAGE DESIGN

S · KUMASAKA

SPECIAL THANKS



YUTAKA HARUKI

AND

ALL KONAMI STAFF

PRODUCER

TOMIKAZU KIRITA

A pixelated sunset scene with a bright sun low on the horizon, casting a glow over a dark landscape. In the foreground, two small, dark figures stand on a light-colored ground. The background features a dark blue sky with a patterned texture.

CONTRA HARD CORPS

SEE YOU NEXT MISSION!

