

Dreamcast™

# READY RUMBLE BOXING

ROUND  
2

TEEN  
T  
CONTENT RATED BY  
ESRB

MIDWAY

T-9717N



# WARNING

## WARNINGS Read Before Using Your Sega Dreamcast Video Game System

### CAUTION

Anyone who uses the Sega Dreamcast should read the operating manual for the software and console before operating them. A responsible adult should read these manuals together with any minors who will use the Sega Dreamcast before the minor uses it.

### HEALTH AND EPILEPSY WARNING

Some small number of people are susceptible to epileptic seizures or loss of consciousness when exposed to certain flashing lights or light patterns that they encounter in everyday life, such as those in certain television images or video games. These seizures or loss of consciousness may occur even if the person has never had an epileptic seizure.

If you or anyone in your family has ever had symptoms related to epilepsy when exposed to flashing lights, consult your doctor prior to using Sega Dreamcast.

In all cases, parents should monitor the use of video games by their children. If any player experiences dizziness, blurred vision, eye or muscle twitches, loss of consciousness, disorientation, any involuntary movement or convulsion, IMMEDIATELY DISCONTINUE USE AND CONSULT YOUR DOCTOR BEFORE RESUMING PLAY.

To reduce the possibility of such symptoms, the operator must follow these safety precautions at all times when using Sega Dreamcast:

- Sit a minimum of 6.5 feet away from the television screen. This should be as far as the length of the controller cable.
- Do not play if you are tired or have not had much sleep.
- Make sure that the room in which you are playing has all the lights on and is well lit.
- Stop playing video games for at least ten to twenty minutes per hour. This will rest your eyes, neck, arms and fingers so that you can continue comfortably playing the game in the future.

### OPERATING PRECAUTIONS

To prevent personal injury, property damage or malfunction:

- Before removing disc, be sure it has stopped spinning.
- The Sega Dreamcast GD-ROM disc is intended for use exclusively on the Sega Dreamcast video game system. Do not use this disc in anything other than a Sega Dreamcast console, especially not in a CD player.
- Do not allow fingerprints or dirt on either side of the disc.
- Avoid bending the disc. Do not touch, smudge or scratch its surface.
- Do not modify or enlarge the center hole of the disc or use a disc that is cracked, modified or repaired with adhesive tape.
- Do not write on or apply anything to either side of the disc.
- Store the disc in its original case and do not expose it to high temperature and humidity.
- Do not leave the disc in direct sunlight or near a radiator or other source of heat.
- Use lens cleaner and a soft dry cloth to clean disc, wiping gently from the center to the edge. Never use chemicals such as benzene and paint thinner to clean disc.

### PROJECTION TELEVISION WARNING

Still pictures or images may cause permanent picture tube damage or mark the phosphor of the CRT. Avoid repeated or extended use of video games on large-screen projection televisions.

### SEGA DREAMCAST VIDEO GAME USE

This GD-ROM can only be used with the Sega Dreamcast video game system. Do not attempt to play this GD-ROM on any other CD player; doing so may damage the headphones and/or speakers. This game is licensed for home play on the Sega Dreamcast video game system only. Unauthorized copying, reproduction, rental, public performance of this game is a violation of applicable laws. The characters and events portrayed in this game are purely fictional. Any similarity to other persons, living or dead, is purely coincidental.



# TABLE OF CONTENTS

GETTING STARTED . . . . .	3-6
GAME CONTROLS . . . . .	7
MAIN MENU . . . . .	8
OPTIONS MENU . . . . .	9-10
PLAYING THE GAME . . . . .	11-13
CHAMPIONSHIP MODE . . . . .	14-18
TOURNAMENT MODE . . . . .	19
TEAM BATTLE MODE . . . . .	20
THE BOXERS . . . . .	21-26
SPECIAL BOXERS . . . . .	27
CREDITS . . . . .	28-29
WARRANTY . . . . .	30

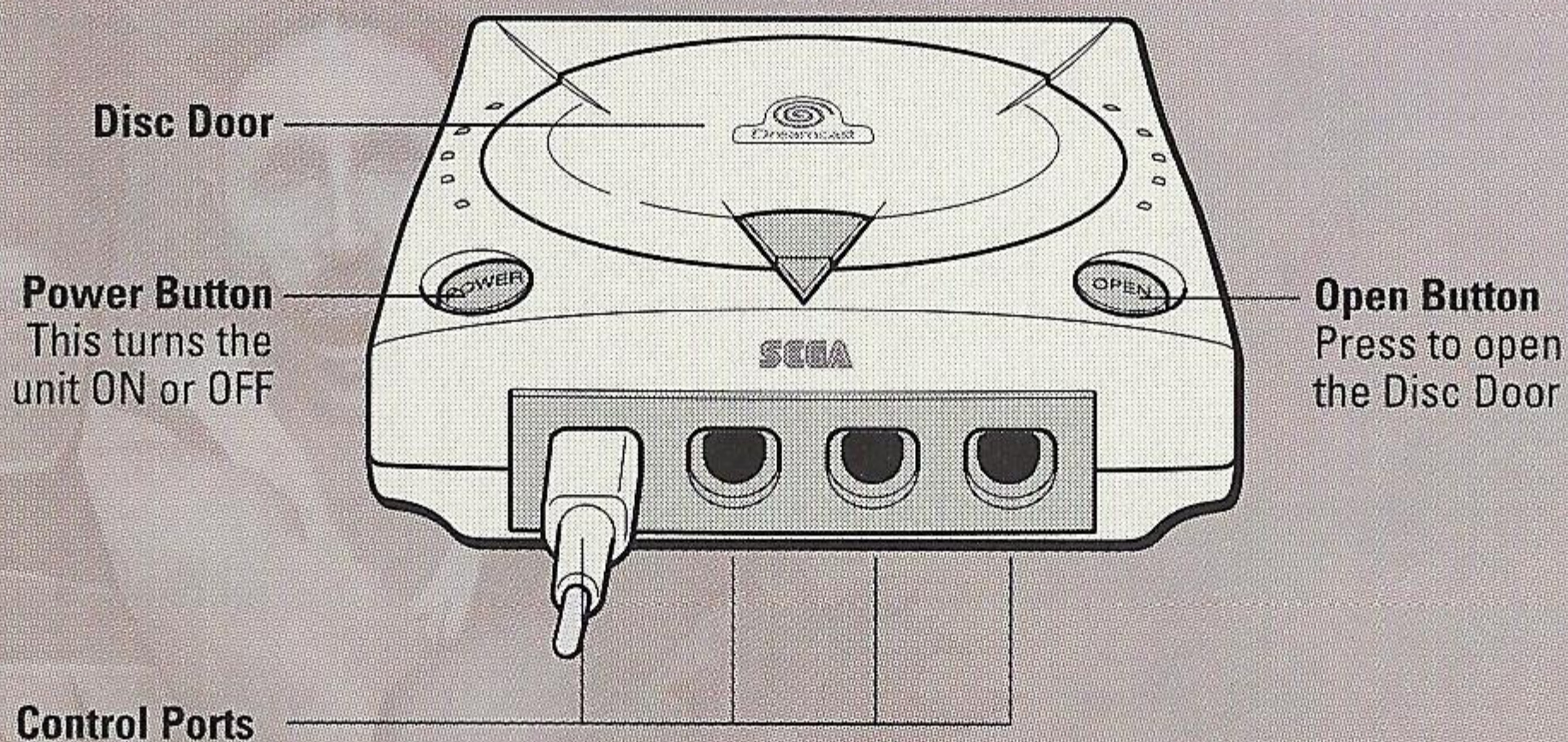


# GETTING STARTED

Before you begin to play Ready 2 Rumble Boxing™: Round 2, pay attention to the following information regarding your Sega Dreamcast Hardware Unit.

- Be sure the Power is off on your Sega Dreamcast system.
- Plug in your Sega Dreamcast controller.
  - \*One controller is included with the Sega Dreamcast at the time of purchase. Additional controllers and peripherals are sold separately. For more information on the Sega Dreamcast controller, see the next page.
- Insert your Ready 2 Rumble Boxing™: Round 2 Sega Dreamcast Specific Disc.
- Press the Power Button to activate the Sega Dreamcast.
- Follow on-screen game instructions.

## SEGA DREAMCAST HARDWARE UNIT





# GETTING STARTED

Before turning the Sega Dreamcast power ON, connect the controller or other peripheral equipment into the control ports of the Sega Dreamcast. Please refer to this page for button locations when viewing the game controls listed on Page 7 of this manual.

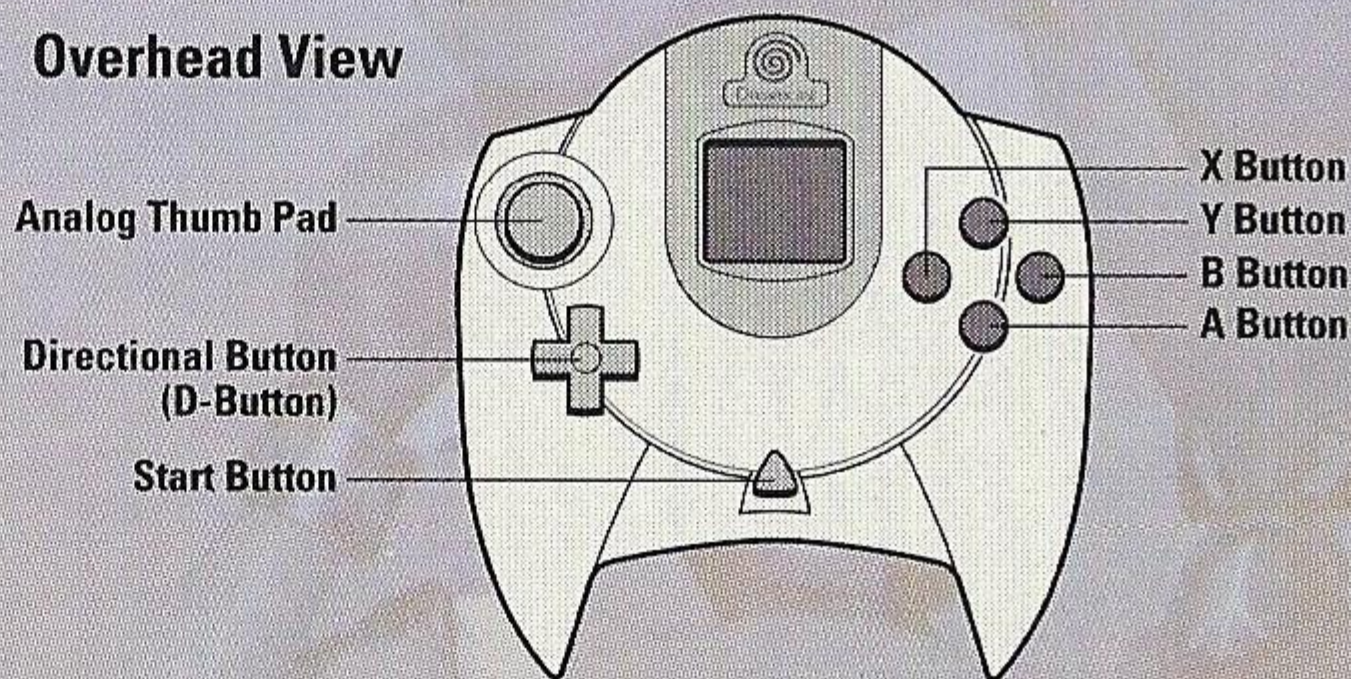
To return to the game's Title Screen at any point during the game, simultaneously press and hold the A, B, X, Y and Start Buttons. This will cause the Sega Dreamcast to soft-reset the software and display the Title Screen.

Never touch the Analog Thumb Pad or Triggers L/R while turning the Sega Dreamcast power ON. Doing so may disrupt the controller initialization procedure and result in malfunction.

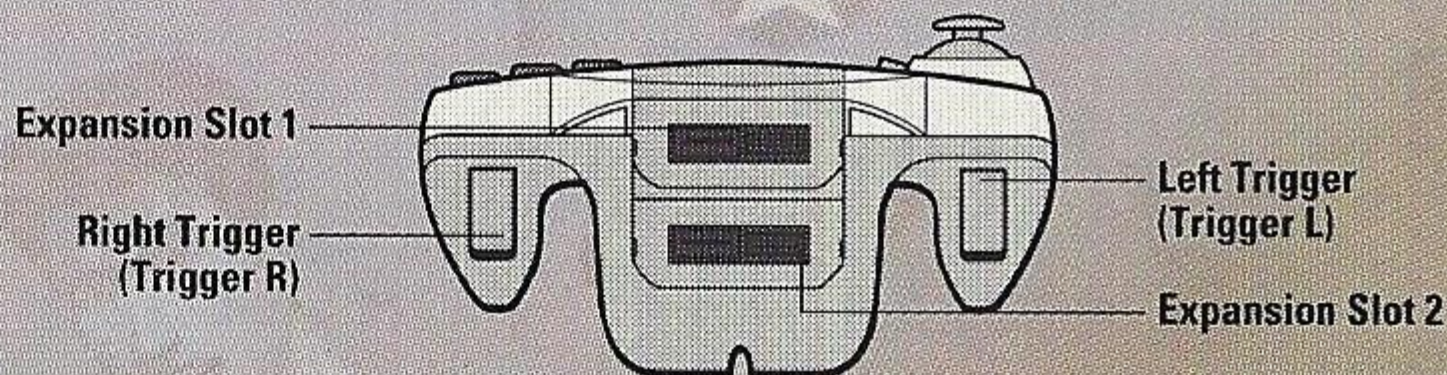
If the Analog Thumb Pad or Triggers L/R are accidentally moved while turning the Sega Dreamcast power ON, immediately turn the power OFF and then ON again making sure not to touch the controller.

## SEGA DREAMCAST CONTROLLER

### Overhead View



### Forward View





# GETTING STARTED

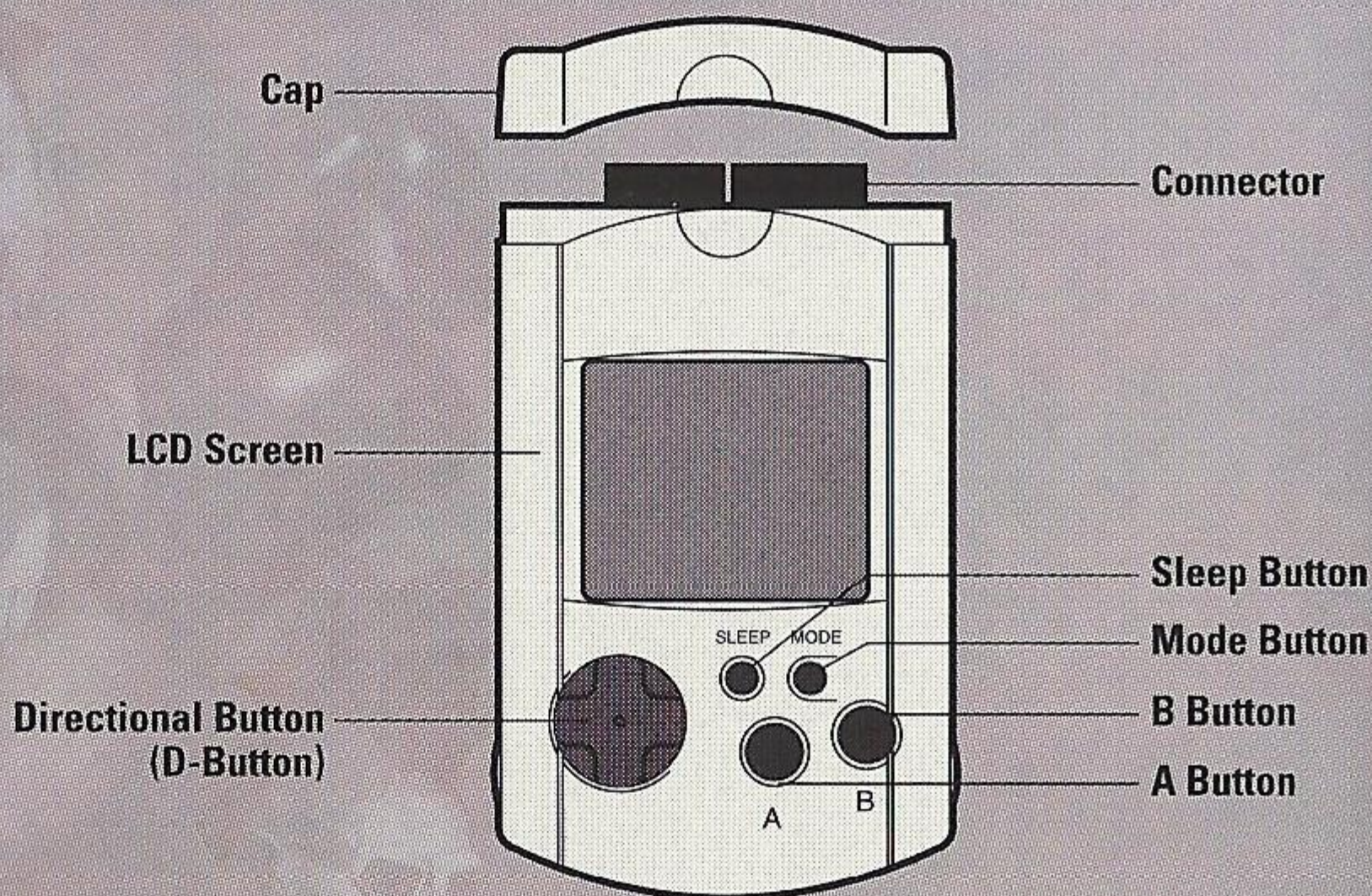
Use the VMU to Load or Save Configuration Data and option settings. After selecting a Load or Save option, press the A Button to Load or Save data. Ready 2 Rumble Boxing™: Round 2 uses an Auto-Save feature. This means that if a VMU is inserted into your controller, your game data will be automatically saved for you.

When saving data, your Controller Configuration and any game configuration settings will be saved to the VMU until the next time you play Ready 2 Rumble Boxing™: Round 2. The VMU will automatically load any saved data when powering up the console, as long as you have a VMU inserted in your Sega Dreamcast Controller.

## SEGA DREAMCAST VISUAL MEMORY UNIT (VMU)

### IMPORTANT WARNING

While saving a game file, never turn OFF the Sega Dreamcast power, remove the VMU or disconnect the controller.



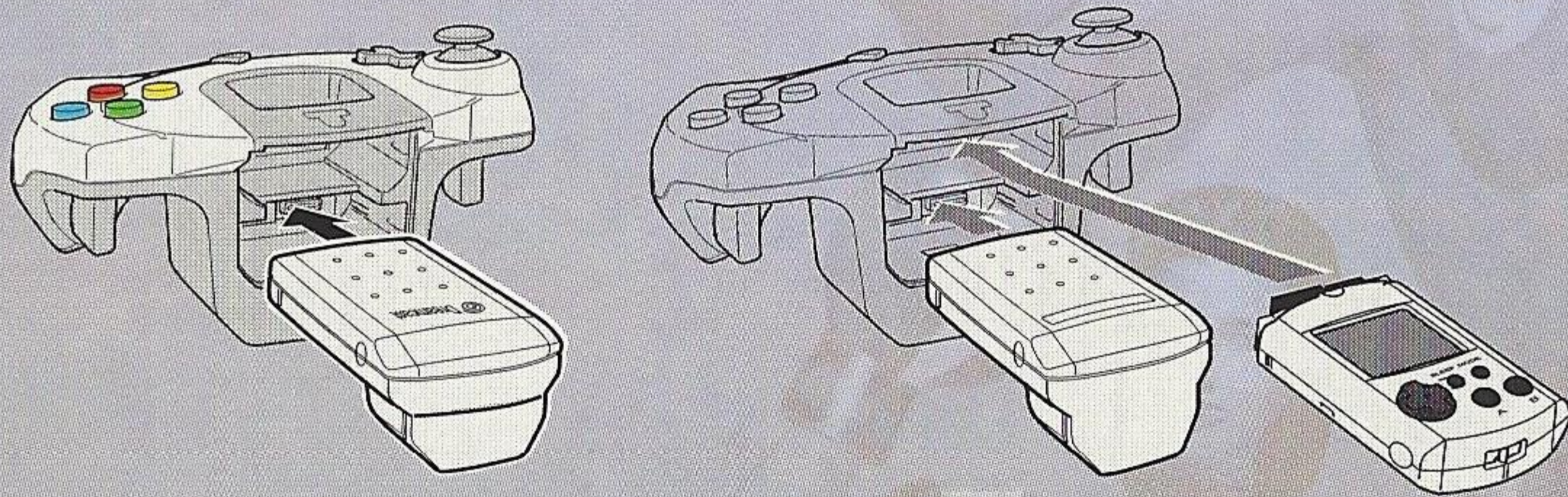


## GETTING STARTED

The Jump Pack is a peripheral (sold separately) that will enhance your gaming experience by vibrating during a game. When activated, the Jump Pack will allow you to feel every hit in the game.

Refer to the diagram below for proper usage of the Jump Pack. If you are using a Jump Pack and wish to turn the vibration feature off, you may do so at the Options Menu (see Pages 9-10). Select JUMP PACK and press Left or Right to activate (ON) or deactivate (OFF) the Jump Pack.

### SEGA DREAMCAST JUMP PACK™



To return to the title screen at any point during game play, simultaneously press and hold the A, B, X, Y and Start Buttons. This will cause the Sega Dreamcast to soft-reset the software.

When the Jump Pack is inserted into Expansion Socket 1 of the Sega Dreamcast Controller, the Jump Pack connects, but does not lock. If the controller is jarred, the Jump Pack may fall out during game play or otherwise inhibit game operation.





# GAME CONTROLS

Here's the default controls for Ready 2 Rumble Boxing™: Round 2. If you want to change the configuration of your controller, you may do so at the Options Menu. See Pages 9-10 for more information.

## BASIC MOVES

MOVE BOXER - Directional Button or Analog Thumb Pad

LOW BLOCK - Left Trigger

HIGH BLOCK - Right Trigger

LOW LEFT PUNCH - A Button

LOW RIGHT PUNCH - B Button

HIGH LEFT PUNCH - X Button

HIGH RIGHT PUNCH - Y Button

PAUSE GAME (access Pause Menu) - Start Button

## SPECIAL MOVES

NOTE: Controls with arrow diagrams indicate pressing the Directional Button or Analog Thumb Pad in the direction shown. These directions reflect your boxer being on the left side of the screen. Remember to reverse the horizontal directions when on the right side of the screen.

JAB - X Button

STRAIGHT - Y Button

BODY BLOW - → + B Button

LOW HOOK - ↓ + A Button

HIGH HOOK - ↑ + Y Button

DODGE - ↓ + L Trigger or R Trigger

PARRY - Tap the L Trigger or R Trigger twice

TAUNT OPPONENT (any of the following) - A Button + X Button or B Button + Y Button  
or A Button + Y Button or X Button + B Button

ACTIVATE RUMBLE MODE - L Trigger + R Trigger (when you spell RUMBLE)

ACTIVATE RUMBLE FLURRY - X Button + Y Button

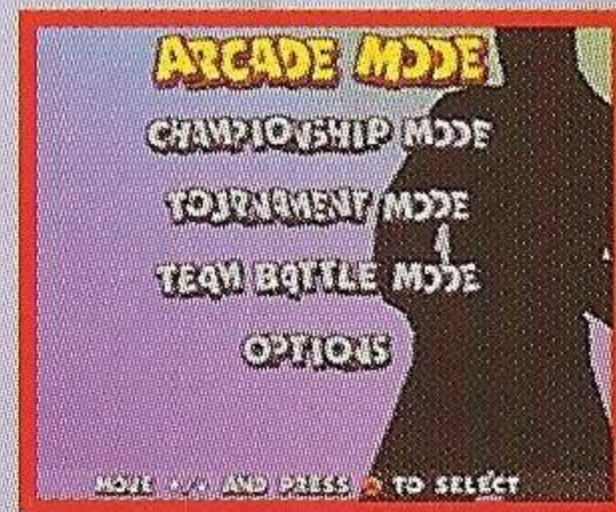


# MAIN MENU

At the game's Title Screen, press the Start Button to access the Main Menu. Highlight your selection and press the A Button to access the sub-menu or game mode.

## ARCADE MODE

For those of you that want to get in the ring and get the fight going, this is your game mode. Select how many players there will be (1 or 2), select your boxers and come out fighting!



## CHAMPIONSHIP MODE

Train your boxers in your own gym. Earn money by winning fights. If you think your boxer has what it takes, enter them in a Title Fight (if you've earned the right to) and find out. More details are available on Pages 14-18.

## TOURNAMENT MODE

Host your own tournament to find out who the local tough guy (or girl) is. Up to eight players can participate! Check out Page 19 for all the info. You must have two controllers to play this game mode!

## TEAM BATTLE MODE

Send your selected boxers into the ring to square off against an opposing team. The first team to beat the other team's boxers is the winner! More information is on Page 20.

## OPTIONS

Adjust the game's volume, configure your controller and lots more! Check out the next two pages for complete details.





# OPTIONS MENU

Before you lace up your gloves, you might want to adjust a few of the game's options. Highlight **OPTIONS** at the Main Menu and press the A Button.

To adjust an option, highlight the option using the directional buttons or left stick. Next, press Left or Right to adjust the option. If you want to change the controller configuration, you must highlight **CONTROLLERS** and press the A Button.

## SKILL LEVEL

This controls the game difficulty. Select from **EASY**, **MEDIUM** or **HARD**.

## KNOCKDOWNS

This determines how many times you can be knocked on your butt before losing. Select from 1 to 10 knockdowns.

## ROUNDS

Set the number of rounds (1 to 12) in a fight.

## ROUND TIME

How long do you want each round to last? Select from 15 seconds to 180 seconds (3 minutes).

## ADJUST SOUND

This sub-menu allows you to raise or lower the volume of the game's different sounds. On a scale from 0% (no volume) to 100% (highest volume), adjust the volumes of the Sound Effects, Selection Sounds, Music, Crowd Noise and the Cornermen. You can also adjust the Audio to be in Stereo or Mono sound.





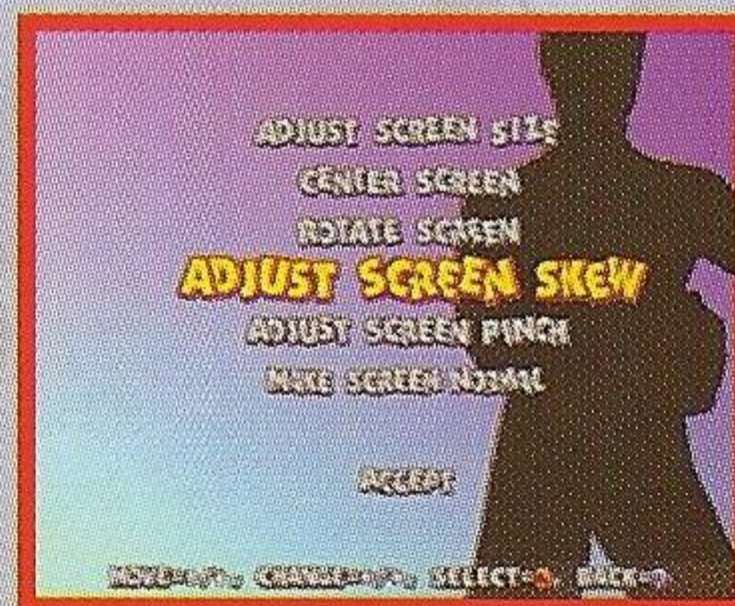
# OPTIONS MENU

## CONTROLLERS

This option allows you to change the configuration of your controller. To change your controller configuration, press Up and Down on the Directional button or Analog Thumb Pad to highlight the different buttons. To change a button, highlight the one to be changed and press the one that you wish to use. To restore the controller configuration to its normal (default) setting, highlight NORMAL and press the A Button. When you're all set, highlight ACCEPT and press the A Button.

## ADJUST SCREEN

This sub-menu allows you to Center and Rotate the display to fit any television. You can also adjust the screen Skew and Pinch. Use the Directional Button to adjust the screen settings. If you make a mistake, highlight MAKE SCREEN NORMAL and press the A Button to restore the screen to its initial or default settings.



## INITIAL SETTINGS

Highlight this and press the A Button to restore the game options to their initial (default) settings.

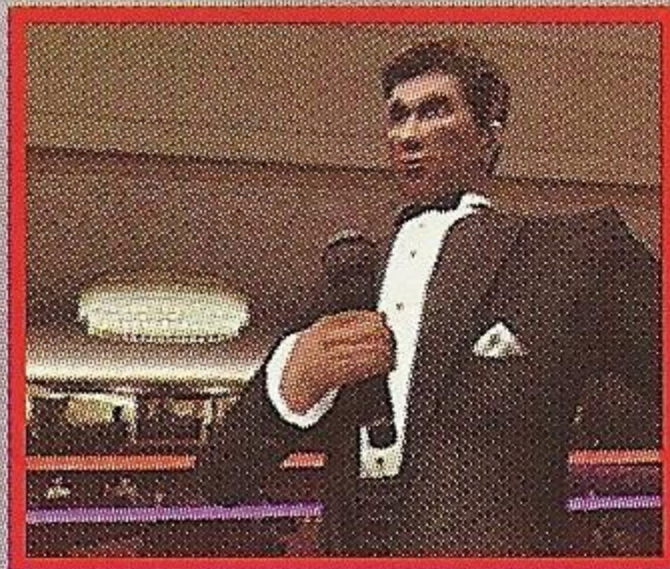
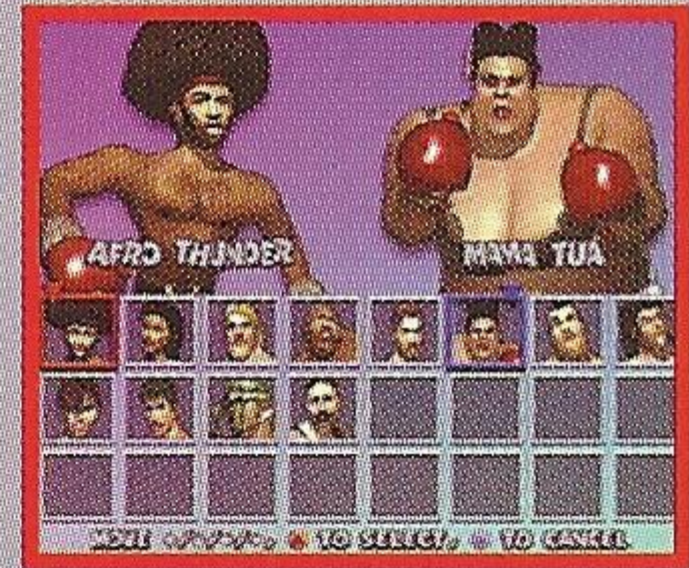
Well, now that you know how to adjust the game's options, let's start getting into the game itself. So if you're ready, turn the page to begin!



# PLAYING THE GAME

## CHOOSE YOUR BOXER

When you select boxers in Arcade Mode, highlight them and press the A Button to select them. If you highlight them and press the X Button, you can change that boxer's costume. Each boxer has a few different costumes, so check each one out. Only visible boxers can be selected. If you'd like to randomly select a boxer, highlight the box with the ? symbol and press the A Button.



## PRE-FIGHT HIGHLIGHTS

At the start of each fight, each boxer will be introduced by the one and only Michael Buffer, the Voice of Champions™. After the boxer introductions, each boxer will have something to say.

Depending on what boxers are squaring off against each other, some may have a bitter history that far exceeds the confines of the ring. When two boxers have an extreme dislike for the other, these "Bad Blood" matches will cause the boxers to say things they wouldn't normally say. So listen carefully, you might just learn why these two hate each other so much. Watch carefully as well because the mat in the ring will change its appearance too. To find out who each boxer's arch rival is, check out the boxers section (Pages 21-26) of this manual.



# PLAYING THE GAME

## HEALTH AND POWER METERS

Each boxer has their own Health and Power Meters. Located in the top corners of the screen, these meters will rise and fall throughout the fight. When the Health Meter disappears, your boxer will be dazed on the canvas. When you do get knocked down, repeatedly press any two buttons to restore your health and get back on your feet. You will not be able to fully recover your health, but your Health Meter will be full enough to at least get back in the fight.

The Power Meter is essential for throwing power-punches or for pulling off combos. If you attempt to perform a combo with no power, you will not be able to do so. The Power Meter drains with every punch or combo you throw, but it will quickly recover when you are not throwing punches.

PLAYER 1  
HEALTH AND POWER

PLAYER 2  
HEALTH AND POWER





# PLAYING THE GAME

## RUMBLE!!!

Whenever you cause enough damage, you will earn a letter in the word RUMBLE. A little more difficult to execute is a Taunt. Taunting your opponent will not only cause a few laughs, but you will also earn a letter or two as well. Be warned, taunting opponents will leave you wide open for attack!

## RUMBLE MODE

When you have earned the necessary letters to spell out RUMBLE, press the L Trigger and R Trigger at the same time to activate RUMBLE MODE. You must have the complete word spelled out (the letters will appear on the bottom of the screen) in order to activate Rumble Mode!

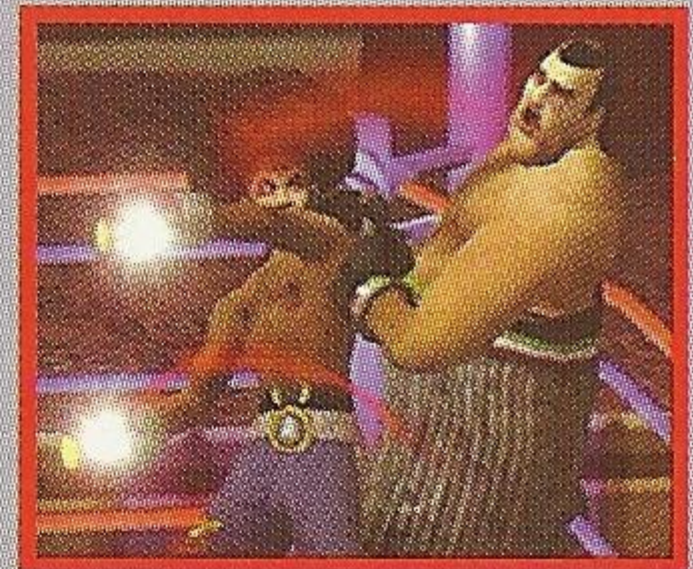
## RUMBLE FLURRY

When you have activated Rumble Mode, your boxer's gloves will begin to glow. When the action resumes, press the X Button and the Y Button at the same time to begin your attack. If you're going to use your Rumble Flurry, you've got to do it quickly. Once your gloves glow, they'll only stay that way for a few seconds.

**FLURRY 1** - Spell RUMBLE one time to unleash a quick series of punches on your opponent.

**FLURRY 2** - Spell RUMBLE twice to let loose a stronger and faster series of punches.

**FLURRY 3** - If you can do it, spell RUMBLE three times to perform a flurry so strong, that one punch will send your opponent flying out of the ring.





# CHAMPIONSHIP MODE

Championship Mode gives you ownership of a gym in which to train your boxers. Your goal is to make all of your gym's boxers champs. It's up to you to train them for their fights and it's your responsibility to keep them trained. Each of your gym's boxers must become champs in order to fully beat the game. You can train your boxers for upcoming fights. These fights are shown on a calendar and are separated into Prize Fights (for money) and Title Fights. Make sure to check out the calendar for your boxer's next fight! Make sure you train for your fights too, because if you lose three Title Fights, your gym will close and you will lose the game. All fights can only be fought on their determined dates, so take the time off and train for them!

From the Main Menu, select CHAMPIONSHIP MODE and press the A Button. If you are using a VMU, you will be able to save your progress. After selecting Championship Mode, you can either begin a NEW GAME or CONTINUE a previously saved one.



Next, you will select your first boxer for your gym. Only boxers that are unlocked will be selectable. Choose the one that you like the most and press the A Button. Your objective is to take your boxer (who is unranked) and move them (through Title Fights) up the ladder, all the way up to champ.

The Championship Mode Menu is the center of your gym. This is where you can train your boxers, schedule their upcoming fights, view their attributes and more.



# CHAMPIONSHIP MODE

## TRAIN BOXER

You have to train your boxers for their fights. Your gym contains a series of 7 challenging and fun mini-games designed to improve your boxer's performance. We'll get into that more on Pages 17-18.

## TITLE FIGHT

Enter fights to become a ranked boxer. Initially, your boxer will begin their career unranked, fighting to be the 12th Ranked contender. The more fights you win, the higher up the ranks you'll climb. When you highlight TITLE FIGHT, you will see the opponent you have to beat. It won't be an easy task, so make sure you train your boxers well. After all, the success of your gym depends on their performance in the ring! If you lose three fights, your gym will be closed and out of business (and your game will be over). Make sure you look for the glove icon on the calendar; this indicates your next Title Fight.

## PRIZE FIGHT

In order for your gym to succeed financially, as well as purchase the vital training aids VITAMIN PROGRAM and RUMBLE MASS (see Page 18), you'll need to win money. Prize Fights allow your boxer to duke it out for a cash prize. The \$ icon on your calendar is your next Prize Fight, so make sure you train for it!.

## EXIT

Exit Championship Mode and return to the Main Menu. To exit, highlight EXIT and press the A Button. You may also cancel the exit command if you wish.



R

UPP

RE

BE

64 (

GAME

ACTIO

ER: \_\_\_\_\_

S VIDE

How

ER 15

IC G/

AL SI

CEIVE

○ (

ON FR

H OTI

Mode.  
boxer.

nches.  
before

er the

Fights

bout.  
can to  
e your  
d is a  
st in a  
stats



P.O.  
COR

Next,  
o view  
Select  
o play  
(AUTO  
fter





**TRAIN**

You ha  
challen  
We'll g

**TITLE I**

Enter  
career  
you wil  
you wil  
sure y  
their p  
and ou  
glove i

**PRIZE**

In ord  
trainin  
need t  
prize.  
you tr

**EXIT**

Exit Ch  
and pr

PLACE  
STAMP  
HERE



BOX 2008

RSICANA, TEXAS 75151-2008



## CHAMPIONSHIP MODE

Training your boxers is an important part of beating Championship Mode. Each training game is designed to improve certain attributes of your boxer. These attributes are:

**STRENGTH** - This measures the power and strength of your boxer's punches.

**STAMINA** - This determines how long your boxer can last in the ring before getting tired.

**ENDURANCE** - How much punishment can your boxer take?

**DEXTERITY** - This attribute controls your boxer's speed. The higher the dexterity level, the faster your boxer will move.

**EXPERIENCE** - How many fights has your boxer had? The more Title Fights you enter, the more experience you will gain.

You should always try to improve your boxer's attributes after each bout. When you do train your boxer, do as many training games as you can to improve all of your boxer's attributes, not just one. This helps to make your boxer's attributes even and not strong in just one or two. What good is a boxer with tremendous strength who doesn't have the stamina to last in a single fight? Also, if you don't train your boxer on a regular basis, their stats will decrease.

To train your boxer, highlight TRAIN BOXER and press the A Button. Next, press Left or Right on the Directional button or Analog Thumb Pad to view the training games. These training games are listed as equipment. Select your training game by pressing the A Button. You can also choose to play the training game (MANUAL TRAINING) or let the game do it for you (AUTO TRAINING). When you're all set, press the A Button to continue. After that, you can select the level of training (difficulty) by pressing Left and Right. When you're all set, press the A Button to continue.



# CHAMPIONSHIP MODE

Next, you will determine how long you want your boxer to train for. Using the calendar which appears, highlight the day you want training to END. The more days you choose, the more the attribute will rise. When building up attributes, remember to watch the attribute meters closely. Your attributes will rise or fall depending on your length of training. GREEN indicates an increase in the attribute, while RED shows a decrease. Remember to watch the calendar for your next fight and train for it!

## TRAINING GAMES

The training games are basically mini-games which help improve your boxer's attributes. Depending on how well you did in the training game, your boxer's attribute (based on what type of training game you played) will rise or not move at all. The training game rules are displayed before you begin a training game, so pay close attention before beginning. When you're ready to begin play, press the A Button.

### JUMP ROPE

The Jump Rope training game helps to build up your stamina. Press the appropriate buttons at the precise time to score.

### SPEED BAG

Throw punches and earn points in this strength-improving training game. Punch the speed bag to earn points. The more you make the bag hit the ceiling, the more points you will earn.

### HEAVY BAG

This game improves your strength. You will be told what punches to throw and you must throw the exact punches to score points. Remember that the more points you get, the more your attribute will grow.



# CHAMPIONSHIP MODE

## SWAY BAG

Improve your dexterity as you punch and then dodge this fast-moving bag. Throw the desired punch and follow the desired movements to score big in this training game.

## RUMBLE PADS

Designed to improve your dexterity, this piece of equipment challenges you to throw punches as fast as you can. Throw the desired punch quickly, because these pads will disappear.

## RUMBLE AEROBICS

Follow the lead of the bubbly Julie the Aerobics Instructor. She'll tell you the moves and leave it up to you to repeat them. The Rumble Aerobics training is designed to improve your dexterity.

## WEIGHT LIFTING

This training game improves your boxer's strength. Lifting weights causes a meter to rise. Keep the meter in the desired area to build points and muscle!

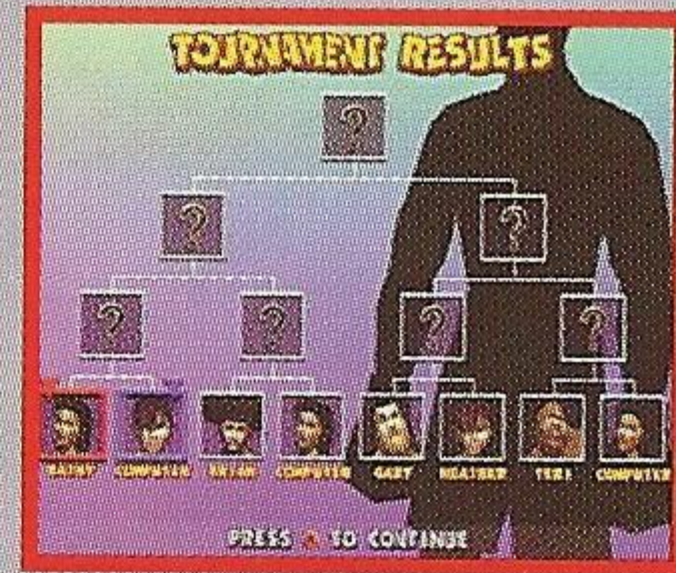
## NON-GAME TRAINING

There are two non-game ways of training your boxer. The VITAMIN PROGRAM and RUMBLE MASS regiments must be paid for. To pay for each program, you must win money in Prize Fights. The Vitamin Program will improve your boxer's stamina and dexterity and costs \$10,000 for each session. The Rumble Mass program will improve your boxer's strength tremendously. The cost for the Rumble Mass training is a staggering \$25,000.



# TOURNAMENT MODE

Tournament Mode allows you to set up your own tournament with up to eight players. From the Main Menu, highlight TOURNAMENT MODE and press the A Button. Select the number of players competing by pressing Left and Right the Directional button or Analog Thumb Pad (you can select from 3 to 8 players). Next, press the A Button to proceed to the name-entering portion your tournament. Remember that you'll need two controllers in order to play.



The next thing you will do is enter a name for each player participating. Letters can be entered by pressing the A Button. When you are finished entering a name, highlight END and press the A Button. To enter another player's name, press the A Button when the player name line is highlighted, then follow the name entering instructions above.

After each player has entered their names, it's time to choose your boxers. In numerical order, each player will select a boxer by highlighting them using the Directional button or Analog Thumb Pad and then pressing the A Button. The next player must press the A Button first before attempting to choose a boxer. This tells the game that Player One is set and Player Two is ready to begin. When all players have selected their boxers, it's time to view the match-ups.

The game will automatically set your match-ups. If you are playing with an odd number of players (3, 5 or 7), one player will have to face a computer-controlled opponent in their first match. If the computer opponent wins that match, it will remain in the tournament until beaten.



# TEAM BATTLE MODE

This game mode allows you to choose a team of up to eight boxers and go against another team. From the Main Menu, highlight **TEAM BATTLE MODE** and press the A Button.

This is a One or Two Player game mode, so choose how many players there will be and press the A Button. Next, select how many boxers will be on each team. Select between 4 through 8 and press the A Button.

Each player can select their boxers by highlighting them and pressing the A Button. If you wish, you can choose the same boxer as many times as you want. After each player has selected their boxers, it's time for the battle to begin.

The first player to eliminate the opposing player's team is the winner.





# THE BOXERS



## AFRO THUNDER

Hometown: New York City, NY  
Height: 5-7 Weight: 121  
Reach: 70" Age: 24  
Arch rival: G. C. Thunder

LH - Left High • RH - Right High  
LL - Left Low • RL - Right Low

**SPECIAL** - Back, Forward + RH  
**COMBO** - LH, LH, RH, RH, RH

Afro Thunder might have gone Hollywood for a while, but he's back. Spurning boxing for three years to pursue a career in action films, he returns with a purpose: upstaging his cousin, G. C. Thunder, who entered the boxing arena in an attempt to fill Afro's void. The movie industry may have temporarily sapped him of his boxing skills, but Afro's stage presence and incomparable showmanship are fine-tuned. The bitter family rivalry has inspired a newfound motivation in Afro, who promises to make a headline-making ring return.



## SELENE STRIKE

Hometown: Brasilia, Brazil  
Height: 6-2 Weight: 130  
Reach: 80" Age: 27  
Arch rival: Mama Tua

LH - Left High • RH - Right High  
LL - Left Low • RL - Right Low

**SPECIAL** - Tap RH repeatedly  
**COMBO** - Forward, Forward + RH, RL, LH

The towering Selene Strike is fighting her way back. After having suffered a serious setback when she went down at the hands of new boxer Mama Tua, a fight which she had figured to dominate, Strike has been battling the demons of her own confidence. Now training with Lulu Valentine, Strike has added new boxing techniques—by utilizing her gymnastic skills and strength training—which have resulted in a restored assurance in her own abilities. She'll start the championship journey with faith in herself and some new weapons of war



## BORIS "THE BEAR" KNOKIMOV

Hometown: Zagreb, Croatia  
Height: 6-3 Weight: 218  
Reach: 73" Age: 33  
Arch rival: Butcher Brown

LH - Left High • RH - Right High  
LL - Left Low • RL - Right Low

**SPECIAL** - Forward, Back + RH, LL  
**COMBO** - Forward + LL, RH, LH

When describing Boris "The Bear" Knokimov, opponents use the word "sellout." Knokimov prefers the term "opportunist." Aware of the advantages of his boxing prominence, Knokimov has for the past three years gone on an endorsement blitz, advertising himself and his products on infomercials the world over, which have garnered him a particularly strong following in his homeland. Realizing that a return to the ring would lengthen his 15 minutes of fame—and his capitalistic endeavors—Knokimov is back with logos, sponsorships, and renewed vigor.



# THE BOXERS

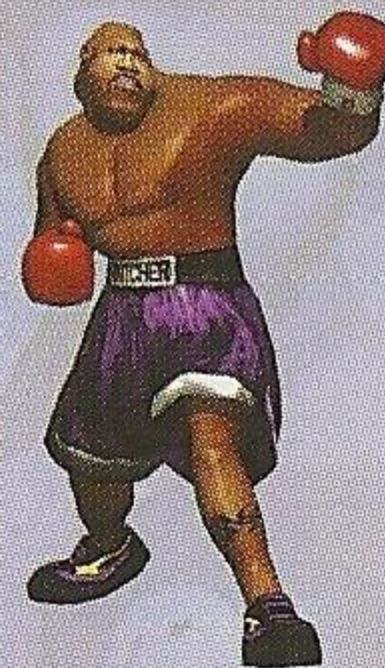
## BUTCHER BROWN

Hometown: District of Columbia  
Height: 5-9 Weight: 235  
Reach: 82" Age: 26  
Arch rival: Boris Knokimov

LH - Left High • RH - Right High  
LL - Left Low • RL - Right Low

**SPECIAL** - Back + LH, RL, LL  
**COMBO** - Back + RH, LH

Banned from boxing two years ago for using the mystical and deadly knockout punch dubbed "The Devastator" in an annihilation of "The Bruiser" Bruce Blade, Butcher Brown has been reinstated and is tanned, rested and ready. One problem: his former mentor who long sought to instill some much-needed mental stability into the life of Brown, has since retired. Although he's physically ready to rumble, Brown must follow the path of mental discipline in order to regain the championship.



## ANGEL "RAGING" RIVERA

Hometown: Monterrey, Mexico  
Height: 5-9 Weight: 153  
Reach: 71" Age: 26  
Arch rival: Rocket Samchay

LH - Left High • RH - Right High  
LL - Left Low • RL - Right Low

**SPECIAL** - Forward, Back + RL, RH  
**COMBO** - Up, Down + LL, RL, LH

Although Angel "Raging" Rivera's name is usually preceded by the word "showboat," he's far from being all style and no substance. He finally nabbed a championship when he defeated Rocket Samchay in a grueling, controversial twelve-round battle. Rivera began his career as a pugilistic purist, eschewing flashiness for sound, conventional technique but altered his approach after a loss to an unorthodox foe. The transformation complete, Rivera proves that style points do count.



## MAMA TUA

Hometown: Kalopei, Oahu  
Height: 6-0 Weight: 400  
Reach: 77" Age: 55  
Arch rival: Selene Strike

LH - Left High • RH - Right High  
LL - Left Low • RL - Right Low

**SPECIAL** - Forward, Forward, RH  
**COMBO** - Up, Down, LH, RL

Mama Tua entered the Ready 2 Rumble ring quite by accident, but it will be her opponent's mistake if they take the 400-pounder lightly. Mama took up boxing as a means of working out and staying fit, but soon realized she had an affinity for handling heavyweights due to her long days raising son Salua, the famed boxer who recently turned wrestler. The family skills are evident in Mama, who obviously doesn't need to live vicariously through her children. Short on ring experience but long in the tooth (and on the scale), Mama is an intriguing competitor.





# THE BOXERS



## JOEY T.

Hometown: Milan, Italy  
Height: 6-4 Weight: 287  
Reach: 79" Age: 38  
Arch rival: Lulu Valentine

LH - Left High • RH - Right High  
LL - Left Low • RL - Right Low

**SPECIAL** - Forward, Forward + RL  
**COMBO** - Up, Down + RL, LL, RH, RH

Joey T. honed his boxing skills as a ruthless hitman, so it shouldn't come as a surprise that he was completely embarrassed when he lost to a girl, Lulu Valentine. After that humiliating defeat, Joey T. vowed to never get knocked down again and has improved on his formerly rudimentary boxing skills. With Mama Tua as a sparring partner, Joey T. has added a new arsenal of punches to complement his bone-crushing blows. The next goal for Joey T: containing that legendary temper.



## JET "IRON" CHIN

Hometown: Taipei, Taiwan  
Height: 5-8 Weight: 148  
Reach: 78" Age: 23  
Arch rival: Johnny "Bad" Blood

LH - Left High • RH - Right High  
LL - Left Low • RL - Right Low

**SPECIAL** - Back + LH, LL, RL, RH  
**COMBO** - Forward + LH, LH, LH

Jet "Iron" Chin parlayed his homeland popularity and successful run at the championships of the Rumble Tournament into a prosperous boxing school. Using distinguished Chinese boxing technique complemented by his own, proven style, Chin has trained some of the greatest boxers in the globe, including Afro Thunder and Rocket Samchay. Not content to retire from his own career, of course, Chin believes that his experience as a boxer combined with his savvy as a trainer have resulted in him becoming a more complete fighter. The "Beast from the East" is ready to rumble!



## LULU VALENTINE

Hometown: Seattle, Washington  
Height: 5-2 Weight: 108  
Reach: 64" Age: 27  
Arch rival: Joey T.

LH - Left High • RH - Right High  
LL - Left Low • RL - Right Low

**SPECIAL** - Back, Back, Forward + RH  
**COMBO** - LH, RH, RL, RL

Lulu Valentine is no one-dimensional woman, and those two dimensions—boxing and fashion design—hardly seem compatible. But we're talking about Lulu Valentine, who possesses the fastest punch on the circuit. Critics wonder whether she's coming back to the ring for a legitimate shot at the championship or merely to promote her successful line of trendy sportswear. Either way, Lulu's sure to bring excitement to the canvas, whether it's with her boxing prowess or signature fashion statements.



# THE BOXERS

## J. R. FLURRY

Hometown: Los Angeles, California  
Height: 5-11 Weight: 150  
Reach: 75" Age: 24  
Arch rival: Wild "Stubby" Corley

LH - Left High • RH - Right High  
LL - Left Low • RL - Right Low

**SPECIAL** - Back, Forward + RH  
**COMBO** - Forward + LH, LL, LL, LH

Maturity has done a lot for J. R. Flurry. Once dubbed "The Prodigal Pugilist" because of the manner in which he turned on his former coach, Gino Stilleto—who then met Flurry in the ring and handed him his lone defeat—Flurry has since tossed aside his arrogant, disrespectful ways. Make no mistake, however, you'll still find some attitude from Flurry, but now it is only punctuation to refined skills and superior knowledge of the sweet science. Prodigal no longer, Flurry presents a big challenge to all his boxing opponents.

## JOHNNY "BAD" BLOOD

Hometown: Papatoetoe, New Zealand  
Height: 6-2 Weight: 231  
Reach: 87" Age: 21  
Arch rival: Jet "Iron" Chin

LH - Left High • RH - Right High  
LL - Left Low • RL - Right Low

**SPECIAL** - Forward + LH + RH  
**COMBO** - Up, Down + RL, LH, RL

Johnny "Bad" Blood, brother of former Rumble participant Jimmy Blood, is a walking contradiction. Despite the fact that he's lived the serene lifestyle of a shepherd most of his years, Blood has also tempted death in his native New Zealand by engaging in the fierce battles of small pubs and back alleys. And although his Maori fighting ways are savage, Blood exercises a certain control, partly fueled by his disciplined desire to measure up to the past successes of his brother.

## "BIG" WILLY JOHNSON

Hometown: Chester, England  
Height: 5-9 Weight: 175  
Reach: 72" Age: 111  
Arch rival: Robox RESE-4

LH - Left High • RH - Right High  
LL - Left Low • RL - Right Low

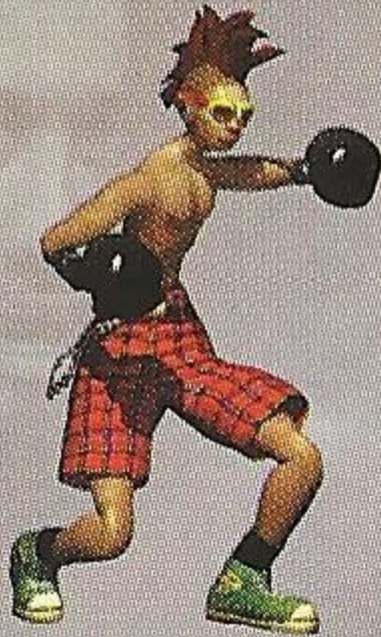
**SPECIAL** - Forward, Forward, Back + LH  
**COMBO** - Forward, Forward, Back + LH, LL

"Big" Willy Johnson is in a time warp, but one that has served him well. A gritty, old-school boxer, Johnson would prefer to fight without gloves but has adapted to the modern age by utilizing some current boxing techniques. That combination of old-time boxing discipline and advanced technical method has made him a diverse and complete boxer and one who oftentimes confuses his one-dimensional foes. It's somebody else's job, however, to convince him his look is about as stylish as a horse-and-carriage.





# THE BOXERS



## FREAK E. DEKE

Hometown: Toronto, Canada  
Height: 5-11 Weight: 128  
Reach: 74" Age: 19  
Arch rival: Freedom Brock

New to the tournament is the uncanny, punk rocker Freak E. Deke, sporting a pair of protective goggles and a mohawk. He acquired his pugilistic skills battling in various punk rock concert mosh pits where he developed a high tolerance for pain. Many underestimate the ability and experience of this wiry, frenetic boxer who wants to turn the Rumble Tournament to anarchy.

LH - Left High • RH - Right High  
LL - Left Low • RL - Right Low

**SPECIAL** - Forward, Forward + RH  
**COMBO** - Back + RH, LH, RH



## G. C. THUNDER

Hometown: Miami, Florida  
Height: 5-7 Weight: 118  
Reach: 70" Age: 20  
Arch rival: Afro Thunder

G. C. Thunder may be a tad diminutive, but he's no lightweight when it comes to boxing or flamboyant fashion. Cousin and longtime rival of Afro Thunder, G. C. has a fair amount of critics who claim he's more performer in the ring than boxer. That hasn't dissuaded him from using his boxing success as a vehicle for opening a chain of hair facilities or from making the claim that he'll become the next world champion.

LH - Left High • RH - Right High  
LL - Left Low • RL - Right Low

**SPECIAL** - Back, Forward + LH  
**COMBO** - Forward + LL + RL, LH, RH



## WILD "STUBBY" CORLEY

Hometown: Corsicana, Texas  
Height: 6-2 Weight: 145  
Reach: 77" Age: 21  
Arch rival: J.R. Flurry

The story of Wild "Stubby" Corley is enough to bring a tear to your eye. After losing his left hand in a freak rodeo accident, the gritty Corley was fitted with an artificial glove during his rehabilitation and discovered an odd ability for the sweet science. Having given up rodeo, Corley, who is called "The Fastest Jab of the West," is dedicated to boxing and is out to prove to the world that he'll be able to beat the best with just one hand. One real hand, that is.

LH - Left High • RH - Right High  
LL - Left Low • RL - Right Low

**SPECIAL** - Forward, Forward + RH  
**COMBO** - LH, RH, RH



# THE BOXERS

## FREEDOM BROCK

Hometown: Santa Cruz, California  
Height: 5-11 Weight: 129  
Reach: 76" Age: 38  
Arch rival: Freke E. Deke

To get a top ring performance from Freedom Brock, simply tell him he's battling an opponent for a killer wave. Brock's life's work is surfing, and even boxing is just a detail. A detail, however, that finances his surfing excursions, so although he's laid-back, Brock gets pretty motivated when he hits the canvas. The critics may question his commitment, but the coasts from Australia to Mexico are littered with the broken bodies of local surfers who dared take on Brock and his unorthodox fighting style.

## ROCKET SAMCHAY

Hometown: Bangkok, Thailand  
Height: 6-2 Weight: 165  
Reach: 78" Age: 26  
Arch rival: Angel "Raging" Rivera

Rocket Samchay has his eyes on the championship. Or 'eye,' that is. The boxer has only one remaining organ of sight after losing the other courtesy of Angel "Raging" Rivera's thumb. A return to his native Thailand to compete in Thai boxing tournaments helped him regain focus and add some lethal new moves. Having honed his skills among some of the greatest Asian fighters in the region, Samchay brings a special resiliency in his quest to succeed in the Rumble Tournament.

## ROBOX RESE-4

Hometown: Chicago, Illinois  
Height: 5-11 Weight: 150  
Reach: 80" Age: 1  
Arch rival: "Big" Willy Johnson

ROBOX RESE-4 may be being used as a marketing ploy, but don't tell it to its face. If anything non-human can have a face, that is. Designed to advertise for ROBOX, an aerobic boxing cardio-fitness machine that is looked on as perhaps the next great health invention, ROBOX RESE-4 does more than just exercise. It is an enhanced version of the machine that is able to take punishment and, when prompted, hand some back. The days of the stationary bike certainly are gone!

LH - Left High • RH - Right High  
LL - Left Low • RL - Right Low

**SPECIAL** - Back, Back + RH  
**COMBO** - Up, Down + LH, LL, RH

LH - Left High • RH - Right High  
LL - Left Low • RL - Right Low

**SPECIAL** - Forward, Back + RL  
**COMBO** - Forward, Back + RL, RH, LH

LH - Left High • RH - Right High  
LL - Left Low • RL - Right Low

**SPECIAL** - Back, Forward, RH  
**COMBO** - Up, Down, LL, LH, RH





## SPECIAL BOXERS

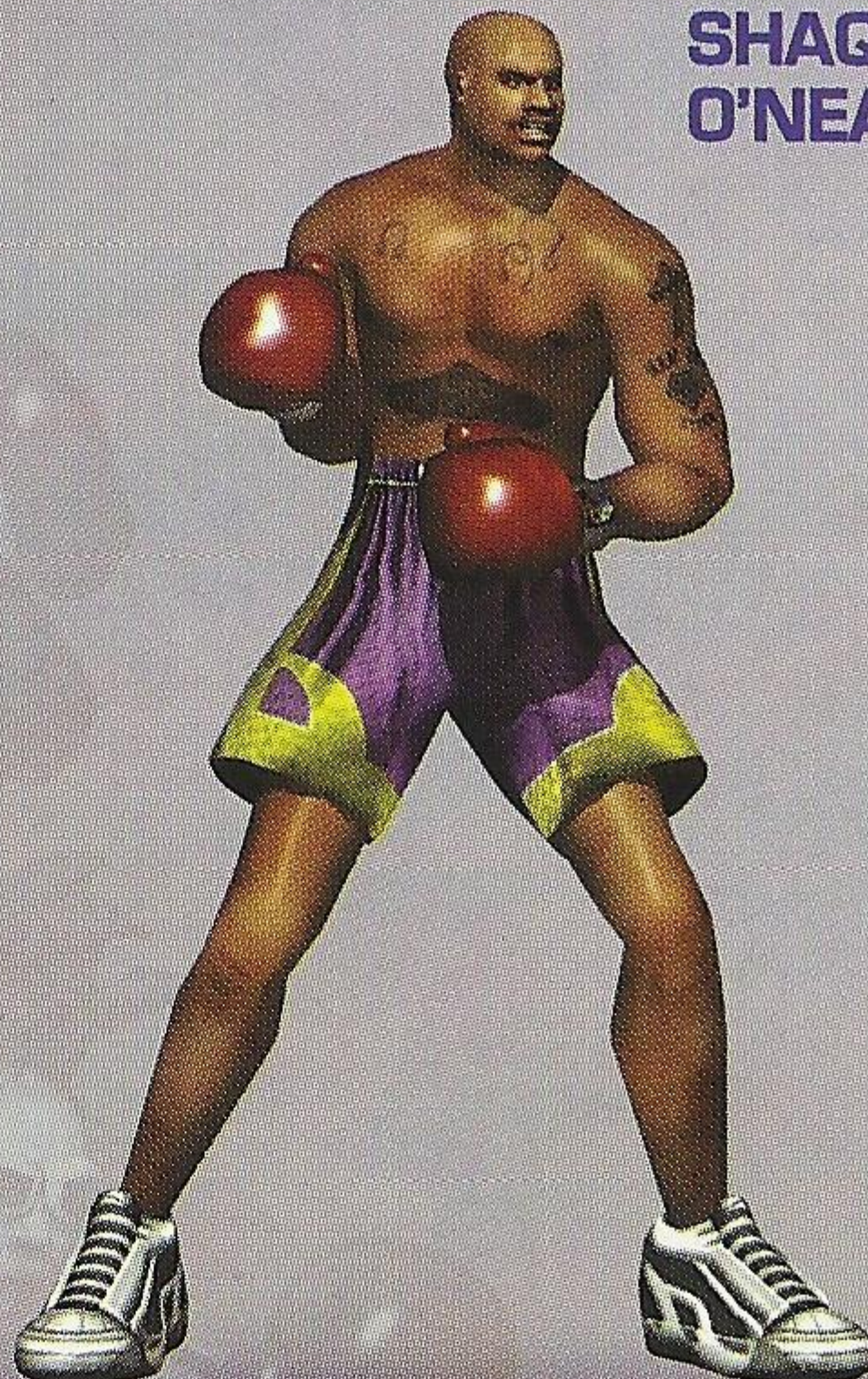
In addition to the regular characters, this time you'll be joined by some special hidden boxers. Although not selectable at first, these boxers can be unlocked by winning games in Arcade Mode. Make sure to check out gaming magazines or the internet for more secrets that can be found in Ready 2 Rumble Boxing™: Round 2!

The more Arcade Mode games you win, the more boxers you will unlock. Do you have what it takes to unlock the two very special boxers below? Then again, do you have what it takes to defeat them?

**MICHAEL JACKSON**



**SHAQUILLE O'NEAL**





# CREDITS

**LEAD ARTIST** Emmanuel Valdez  
**LEAD PROGRAMMER** Dave Wagner  
**SENIOR ARTIST** Alesia Howard  
**SENIOR PROGRAMMER** Terry Bertram  
**SENIOR ANIMATOR** Mike Cuevas  
**ENGINE DESIGN** Ian McLean

## GRAPHICS ARTISTS

Tina Hou, Tad Ehrlich & Rex Cataroja

**ANIMATORS** Jackie Corley & Umberto Bossi

**SOUNDSTATION** Orpheus Hanley

**SOFTWARE DEVELOPMENT MANAGER** Brian Johnson

## ADDITIONAL SUPPORT

Neal O'Hara, Bert Farache, Don Poole & Brian Lawson

**MUSIC DEVELOPMENT MANAGER** Aubrey Hodges

**TOOLS & TECHNOLOGY** Lori Miller

**ASSISTANT PRODUCER** Donte Knippel

**INTRO FMV** DREAM THEATER

## CHAMPIONSHIP FMVS

Murphy Michaels, Pete Pang, Dave Menkes, Dave Young,  
Roland Tamayo & Warren Atkins

**ADDITIONAL ART SUPPORT** Aaron Carlson & Samir Patel

**MOTION CAPTURE SUPPORT** J.R. Salazar & Josh Hutchins

## MOTION TALENT

Joel Zales, Orpheus Hanley, Miguel Vargas, Emmanuel Valdez & Michael Jackson



# CREDITS

## VOICE TALENT

Michael Buffer, Bruce Buffer, Jose Fernandez, Jason Gregory, Margo Gartner, Michael Cuevas, Orpheus Hanley, Andrew Hoolan, Rebecca McCabe, Murphy Michaels, Brenda Outland, J.R. Salazar, Erin Shems, Brian Silva, Eric Thompson, Emmanuel Valdez, Kevin Wang, Richard Wheland, Yvonne White, Dave Wilkins & Shaquille O'Neal

## PRINT DESIGN & PRODUCTION

Midway Creative Services, San Diego, CA

## PRODUCT TESTING MANAGER

Hans Lo

## PRODUCT TESTING SUPERVISORS

Steve Kramer & Seth McNew

## LEAD PRODUCT ANALYSTS

Shon Flanagan & Andrew Nguyen

## TECHNICAL STANDARDS ANALYSTS

Jason Dickson, Clark Terrill & Jeff Marcus

## PRODUCT ANALYSTS

Bishop, Pete Briones, Mike Mengle, Chanel Penley, Ronald Salleza, Lee Fletcher, Phil Gorney & Chris Allen

## PRODUCT MARKETING MANAGER

Christa Wittenberg

## ASSOCIATE PRODUCT MANAGER

Phil Marineau

## VICE PRESIDENT, MARKETING

Helene Sheeler

## DIRECTOR, SPORTS MARKETING

Mike Lustenberger

## SPECIAL THANKS TO

Shaquille O'Neal, Kristine Lefebvre, Evvy Tavasci, Michael Buffer, Bruce Buffer, Kristen Watson, Kathy Schoback, John Rowe, Deborah Fulton, Don Knapp, Rob Gustafson, Sandra Brown, Amy Bartlett, Andrew Hoolan, Gary Gonzales, Mohammed Davoudian, Mayuko Ball, Franz Borowitz, Paul Chamberlain, Sean Coolidge, Jeannie De La Rosa, Filiberto Espinoza, Brian Lowe, Mylah Padigos Valdez, J.R. Salazar, Kevin Wang, Dave Wilkins, Byron Warner, Teri Higgins, Heather Hawkins, Mike Cavalier, Thang Nguyen, Tim Granich, Mike Ribero, Mark Beaumont, David Greenspan & All Our Families and Friends

**VERY SPECIAL THANKS TO MICHAEL JACKSON**



# WARRANTY

MIDWAY HOME ENTERTAINMENT INC. warrants to the original purchaser of this Midway Home Entertainment Inc. software product that the medium on which this computer program is recorded is free from defects in materials and workmanship for a period of ninety (90) days from the date of purchase. This Midway Home Entertainment Inc. software program is sold "as is," without express or implied warranty damages of any kind, and Midway Home Entertainment Inc. is not liable for any losses or damages of any kind resulting from the use of this program. Midway Home Entertainment Inc. agrees for a period of ninety (90) days to either repair or replace, at its option, free of charge, any Midway Home Entertainment Inc. software product, postage paid, with proof of purchase, at its Factory Service Center. This warranty is not applicable to normal wear and tear. This warranty shall not be applicable and shall be void if the defect in the Midway Home Entertainment Inc. software product has arisen through abuse, unreasonable use, mistreatment or neglect. THIS WARRANTY IS IN LIEU OF ALL OTHER WARRANTIES AND NO OTHER REPRESENTATIONS OR CLAIMS OF ANY NATURE SHALL BE BINDING ON OR OBLIGATE Midway Home Entertainment Inc. ANY IMPLIED WARRANTIES APPLICABLE TO THIS SOFTWARE PRODUCT, INCLUDING WARRANTIES OF MERCHANTABILITY AND FITNESS FOR A PARTICULAR PURPOSE, ARE LIMITED TO THE NINETY (90) DAY PERIOD DESCRIBED ABOVE. IN NO EVENT WILL MIDWAY HOME ENTERTAINMENT INC. BE LIABLE FOR ANY SPECIAL, INCIDENTAL, OR CONSEQUENTIAL DAMAGES RESULTING FROM POSSESSION, USE OR MALFUNCTION OF THIS MIDWAY HOME ENTERTAINMENT INC. SOFTWARE PRODUCT. Some states do not allow limitations as to how long an implied warranty lasts and/or exclusions or limitations of incidental or consequential damages so the above limitations and/or exclusions of liability may not apply to you. This warranty gives you specific rights, and you may also have other rights which vary from state to state.

**Midway Home Entertainment Inc.**  
**P.O. Box 2097**  
**Corsicana, TX 75151-2097**  
**[www.midway.com](http://www.midway.com)**

**Midway Customer Support      903 874-5092**  
**10:00am - 6:30pm / Central Time / Monday - Friday**  
**Automated help line open 24 hours a day**

## ESRB RATING

This product has been rated by the Entertainment Software Rating Board. For information about the ESRB rating, or to comment about the appropriateness of the rating, please contact the ESRB at 1-800-771-3772.

Sega is registered in the US Patent and Trademark Office. Sega Dreamcast, the Dreamcast Swirl, are trademarks of SEGA. Sega of America, P.O. Box 7639, San Francisco, CA 94120. All Rights Reserved. Programmed in Japan. Made and printed in the USA. WARNING: Operates only with NTSC televisions and Sega Dreamcast systems purchased in North and South America (except Argentina, Paraguay and Uruguay). Will not operate with any other televisions or Sega Dreamcast systems. Product covered under one or more of the following U.S. Patents: 5,460,374; 5,525,770; 5,627,895; 5,688,173; 4,442,486; 4,454,594; 4,462,076; Re. 35,839; Japanese Patent No.2870538, (Patents pending in U.S. and other countries); Canada Patent No. 1,183,276. The ratings icon is a trademark of the Interactive Digital Software Association.

**SEGA®**





MIDWAY HOME ENTERTAINMENT  
P.O. Box 2097 Corsicana, TX 75151-2097  
www.midway.com

READY 2 RUMBLE BOXING ROUND 2 © 2000 Midway Home Entertainment Inc. All Rights Reserved. Likeness of Michael Buffer and the READY TO RUMBLE trademark used under license from Buffer Partnership (www.letsrumble.com). Likeness of Shaquille O'Neal used under license. DUNK.NET, DUNK and the Dunk logos are trademarks and service marks of Dunk.net. Likeness of Michael Jackson depicted pursuant to a license agreement with Triumph International, Inc. Certain political figures are parodied in this game. Neither William Jefferson Clinton nor Hillary Rodham Clinton endorse this game. All other character names are trademarks of Midway Home Entertainment Inc. MIDWAY and the Midway logo are trademarks of Midway Amusement Games, LLC. Used by permission. Distributed under license by Midway Home Entertainment Inc.

Sega is registered in the US Patent and Trademark Office. Sega, Dreamcast and the Dreamcast logo are either registered trademarks or trademarks of Sega Enterprises, LTD. All Rights Reserved. Made and printed in the USA. WARNING: Operates only with NTSC televisions and Sega Dreamcast systems purchased in North and South America (except Argentina, Paraguay and Uruguay). Will not operate with any other televisions or Sega Dreamcast systems. Product covered under one or more of the following U.S. Patents: 5,460,374; 5,525,770; 5,627,895; 5,688,173; 4,442,486; 4,454,594; 4,462,076; Re. 35,839; Japanese Patent No.2870538, (Patents pending in U.S. and other countries); Canada Patent No. 1,183,276. The ratings icon is a trademark of the Interactive Digital Software Association. Sega of America Dreamcast, Inc, P.O. Box 7639, San Francisco, CA 94120.



DUNK.NET

 **MIDWAY**

**SEGA**<sup>®</sup>