

*SHINING WISDOM*  
*STAFF*



*Program*

*YASUHIRO TAGUCHI*

*AKIKO SATO*

*TAKESHI NOHARA*

*P. E. JARETH HEIN*

*YUTAKA YAMAMOTO*



*Subscript*

*HIROYUKI TAKAHASHI*

*English Translation*

*VICTOR IRELAND*

*KEI KUBOKI*

*P. E. JARETH HEIN*



*Map Design*

*SHUJI SHIMIZU*

*AYUMU SHINDO*

*TATSUYA NIKURA*

*HIROYUKI TAKAHASHI*





*Character Design*

*HIROSHI KAJIYAMA*



*Map Graphics*

*SHIGEKI KIMURA*

*FUMIHIDE AOKI*

*MASAYUKI HASHIMOTO*

*HIROTO NAKASHIMA*

*AYUMU SHINDO*

*KEISUKE FUTAMI*

*MIEKO KOGUCHI*



*Map Organization*

*YUSUKE SUGIMOTO*



*Character Graphics*  
*& Movie*

*TOMOKO MURAKAMI*  
*JUNKO NAKAMURA*





*Music*

*MOTOAKI TAKENOUCHI*



*Sound Effects*

*SATOSHI MURATA*



*Game Manual*

*DON SHIRLEY*



*Sales & Publicity*

*KELLY KNIGHT  
MATT ATWOOD*





*Lead Tester*

*BONNIE SHIRLEY*

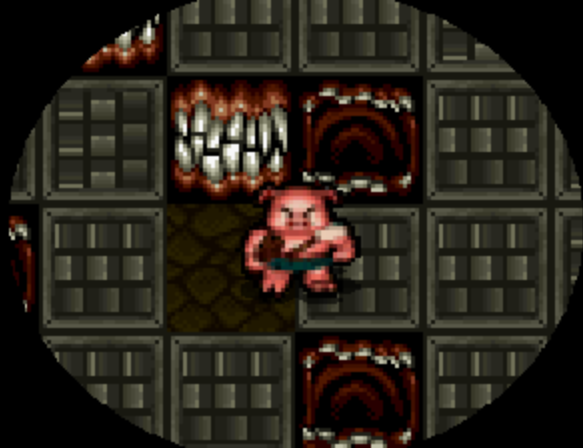
*Support*

*SHINOBU SHINDO*



*Map Illustration*

*SHIN YAMANOUCHI*



*Directed By*

*YASUHIRO TAGUCHI*



*Produced By*

*HIROYUKI TAKAHASHI*





*Special Thanks To*

*CAMELOT Co., Ltd.*

*R.I.S. Co., Ltd.*

*RIT'S Co., Ltd.*

*TREASURE Co., Ltd.*

*CINDY IRELAND*

*BRODRICO SUAVE*

*JIN SHIMAZAKI*

*SHIN HAMANAKA*



*Created By*

*SONIC Co., Ltd.*

*© SEGA 1995, 1996*

*English Translation*

*© 1996 Working Designs*