

Dreamcast™



SPAWN®

In The Demon's Hand

CAPCOM

TODD McFARLANE
ENTERTAINMENT



T-1216N

WARNINGS Read Before Using Your Sega Dreamcast Video Game System

CAUTION

Anyone who uses the Sega Dreamcast should read the operating manual for the software and console before operating them. A responsible adult should read these manuals together with any minors who will use the Sega Dreamcast before the minor uses it.

HEALTH AND EPILEPSY WARNING

Some small number of people are susceptible to epileptic seizures or loss of consciousness when exposed to certain flashing lights or light patterns that they encounter in everyday life, such as those in certain television images or video games. These seizures or loss of consciousness may occur even if the person has never had an epileptic seizure.

If you or anyone in your family has ever had symptoms related to epilepsy when exposed to flashing lights, consult your doctor prior to using the Sega Dreamcast.

In all cases, parents should monitor the use of video games by their children. If any player experiences dizziness, blurred vision, eye or muscle twitches, loss of consciousness, disorientation, any involuntary movement or convulsion, **IMMEDIATELY DISCONTINUE USE AND CONSULT YOUR DOCTOR BEFORE RESUMING PLAY.**

To reduce the possibility of such symptoms, the operator must follow these safety precautions at all times when using the Sega Dreamcast.

- Sit a minimum of 6.5 feet away from the television screen. This should be as far as the length of the controller cable.
- Do not play if you are tired or have not had much sleep.
- Make sure that the room in which you are playing has all the lights on and is well lit.
- Stop playing video games for at least ten to twenty minutes per hour. This will rest your eyes, neck, arms and fingers so that you can continue comfortably playing the game in the future.

OPERATING PRECAUTIONS

To prevent personal injury, property damage or malfunction:

- Before removing the disc, be sure it has stopped spinning.
- The Sega Dreamcast GD-ROM disc is intended for use exclusively on the Sega Dreamcast video game system. Do not use this disc in anything other than a Sega Dreamcast console, especially not in a CD player.
- Do not allow fingerprints or dirt on either side of the disc.
- Avoid bending the disc. Do not touch, smudge or scratch its surface.
- Do not modify or enlarge the center hole of the disc or use a disc that is cracked, modified or repaired with adhesive tape.
- Do not write on or apply anything to either side of the disc.
- Store the disc in its original case and do not expose it to high temperature and humidity.
- Do not leave the disc in direct sunlight or near a radiator or other source of heat.
- Use lens cleaner and a soft dry cloth to clean the disc, wiping gently from the center to the edge. Never use chemicals such as benzene and paint thinner to clean the disc.

PROJECTION TELEVISION WARNING

Still pictures or images may cause permanent picture tube damage or mark the phosphor of the CRT. Avoid repeated or extended use of video games on large-screen projection televisions.

SEGA DREAMCAST VIDEO GAME USE

This GD-ROM can only be used with the Sega Dreamcast video game system. Do not attempt to play this GD-ROM on any other CD player; doing so may damage the headphones and/or speakers. This game is licensed for home play on the Sega Dreamcast video game system only. Unauthorized copying, reproduction, rental, or public performance of this game is a violation of applicable laws. The characters and events portrayed in this game are purely fictional. Any similarity to other persons, living or dead, is purely coincidental.



A Special Message from CAPCOM ENTERTAINMENT

Thank you for selecting SPAWN for your Sega Dreamcast. We at CAPCOM ENTERTAINMENT are proud to bring you this new addition to your video game library.

CAPCOM ENTERTAINMENT, INC.

475 Oakmead Parkway, Sunnyvale, CA 94086

© CAPCOM CO., LTD. 2000 ALL RIGHTS RESERVED.

© CAPCOM U.S.A., INC. 2000 ALL RIGHTS RESERVED.

CAPCOM and the CAPCOM LOGO are registered trademarks of CAPCOM CO., LTD. CAPCOM EDGE is a trademark of CAPCOM CO., LTD. SPAWN is a registered trademark of Todd McFarlane Entertainment. Sega, Dreamcast and the Dreamcast logo are either registered trademarks or trademarks of Sega Enterprises, Ltd. The ratings icon is a registered trademark of the Interactive Digital Software Association.

TODD McFARLANE
ENTERTAINMENT



CAPCOM EDGE HINT LINE

Hints are available:

1-900-976-EDGE (1-900-976-3343)

\$.99 per minute for 24-hr. pre-recorded information.

\$1.35 per minute for live Game Counselor assistance.

From Canada: 1-900-677-2272 (\$1.35 per minute).

Must be 18 years or older, or have parental permission. Game Counselors available Monday - Friday 8:30 a.m. - 5:00 p.m. Pacific Time. This hint line supports games produced by CAPCOM ENTERTAINMENT, INC. only. No hints will be given on our Consumer Service line. You must have a touch-tone phone to use this service.

CAPCOM ON-LINE

<http://www.capcom.com>

Visit our website to see all the great new CAPCOM products or to check out featured games on-line! You can also e-mail us at megamail@capcom.com for technical help or to find out what's new at CAPCOM!

CONTENTS

Sega Dreamcast™	2
Starting a Game	3
Controls (default)	4
Unholy Combat	6
Game Rules	8
Cockpit	9
Battle System	10
Game Modes	11
Options	13
Characters	14
Al Simmons	14
Sam	15
Jessica Priest	16
Cogliostro	17
Tiffany	18
Brimstone	19
Redeemer	20
Grace	21
Clown	22
Tremor	23
Twitch	24
Spawn	25
Capcom Edge	28

SEGA DREAMCAST™



POWER BUTTON
This turns the unit
ON or OFF.

OPEN BUTTON
Press to open the Disc Door.

CONTROL PORTS

Use these ports to connect the Sega Dreamcast controller or other peripheral equipment. From left to right are CONTROL PORT A, CONTROL PORT B, CONTROL PORT C, and CONTROL PORT D. For SPAWN, use each port to connect controllers for players 1-4 respectively.

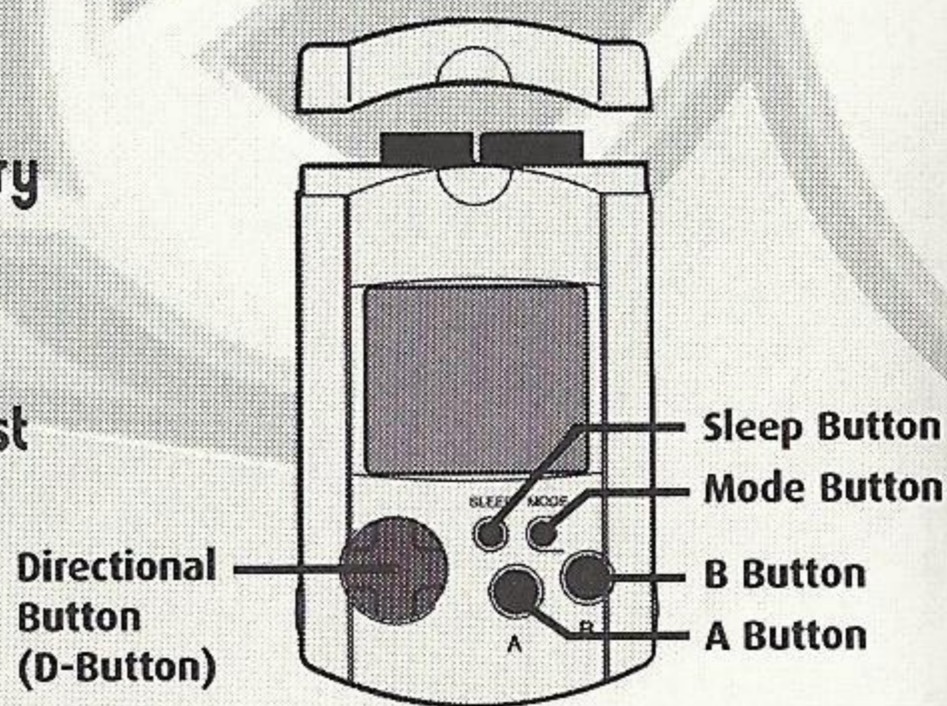
SPAWN is a 1-to-4 player game. Before turning the Sega Dreamcast power ON, connect the controller or other peripheral equipment into the control ports of the Sega Dreamcast.

SEGA DREAMCAST VISUAL MEMORY UNIT (VMU)

To save option settings and high score data, insert a Visual Memory Unit (VMU) into Expansion Slot 1 of the controller in Control Port A BEFORE turning on the Sega Dreamcast.

Note: While saving a game file, never turn OFF the Sega Dreamcast power, remove the memory card or disconnect the controller.

Note: If you do not have a memory card inserted at power up, an error message will appear. This message refers to Saving and Network play. Network play is a feature only available in Japan and cannot be accessed in the United States version.



Demon Lord Malebolgia loves bloody amusement. His pleasure is imprisoning various warriors and making them destroy each other for their own souls. However, he is unaware that one of his favorite toy soldiers is the deadliest assassin ... One with the capability to destroy even the Demon Lord himself.

His name is SPAWN.

STARTING A GAME

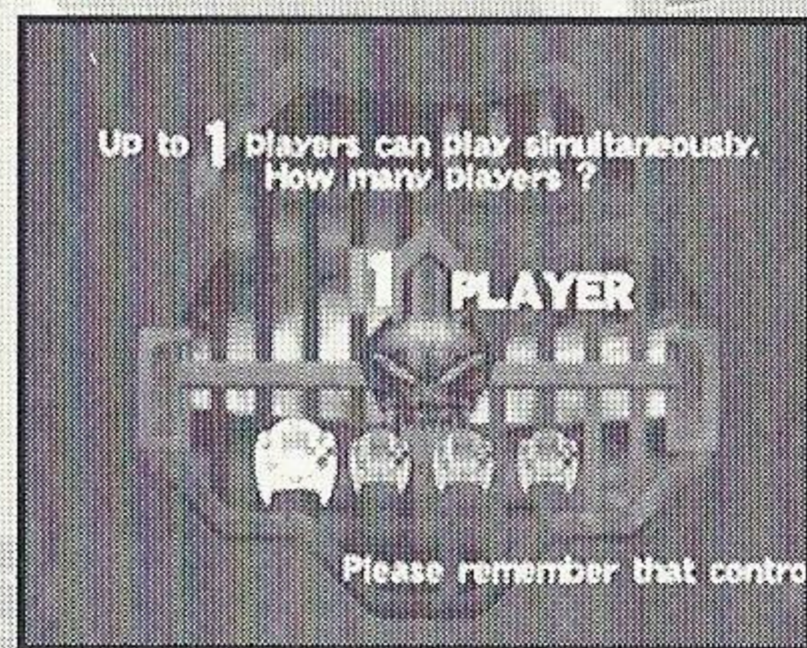
Press the Start Button at the Title screen to display the Game Mode menu. To make your selections on the following screens, use the Directional Button or Joystick to choose and press the A Button (A or C Button on Sega Dreamcast Arcade Stick) to confirm.

- Select a game mode. (See game mode descriptions beginning on page 11.)
- Select the number of players. If you choose ARCADE MODE, this screen will appear. Be sure to connect the required number of controllers (1-4) before starting the game.

AUTOMATIC SAVE

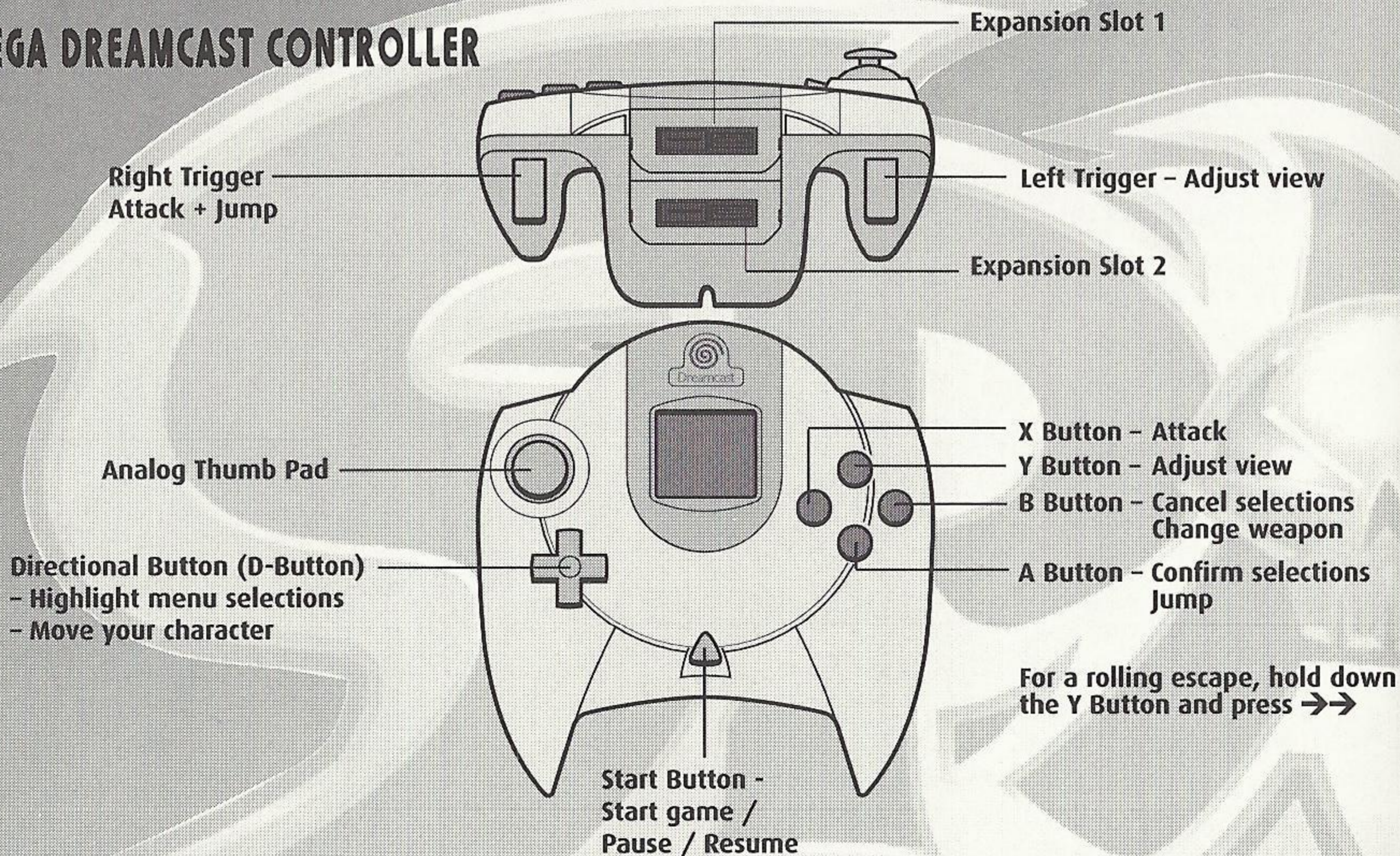
In SPAWN, your game data is saved automatically:

- To save game data, an optional VMU is required. Be sure to insert the VMU into Expansion Slot 1 of the controller in Control Port A.
- While saving a game file, never turn off the Sega Dreamcast power, remove the VMU or disconnect the controller.
- This game requires 2 blocks to save game data.



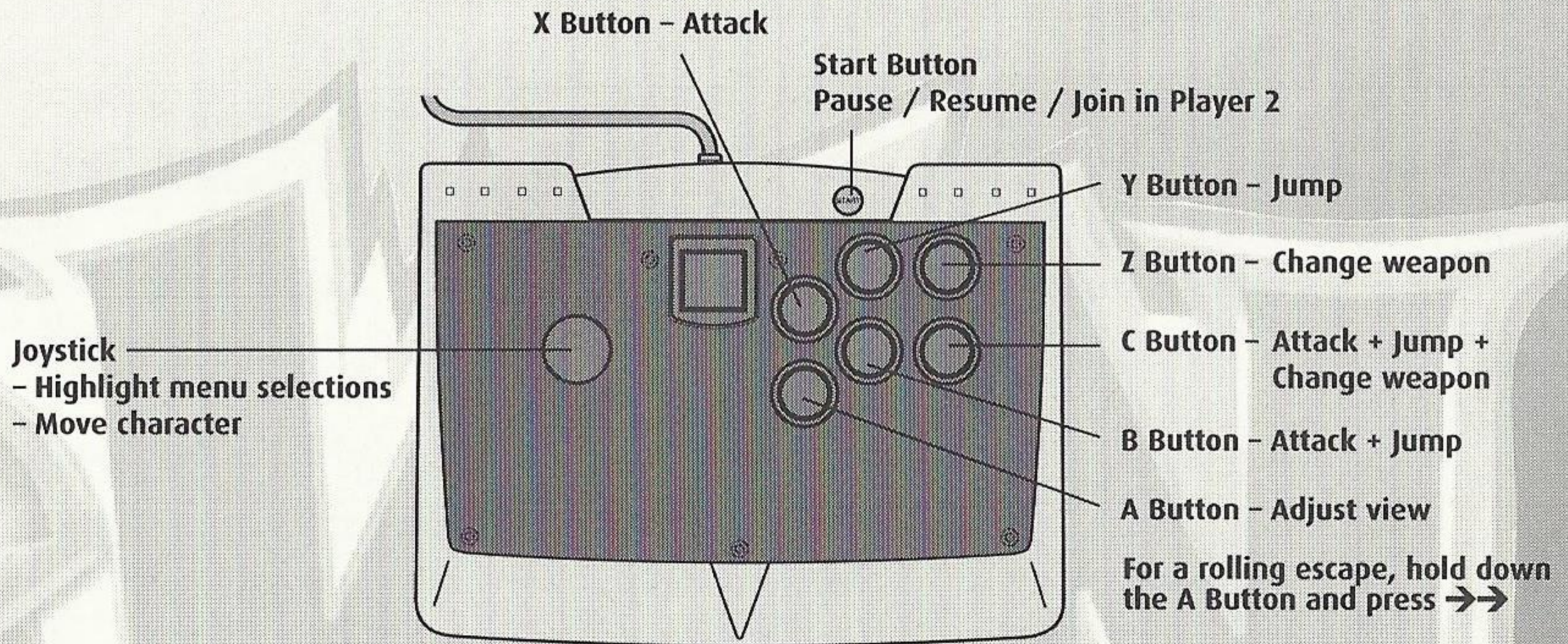
CONTROLS (default)

SEGA DREAMCAST CONTROLLER



Never touch the Analog Thumb Pad or Left/Right Triggers while turning the Sega Dreamcast power ON. Doing so may disrupt the controller initialization procedure and result in malfunction. If the Analog Thumb Pad or Left/Right Triggers are accidentally moved while turning the Sega Dreamcast power ON, immediately turn the power OFF and then ON again, making sure not to touch the controller.

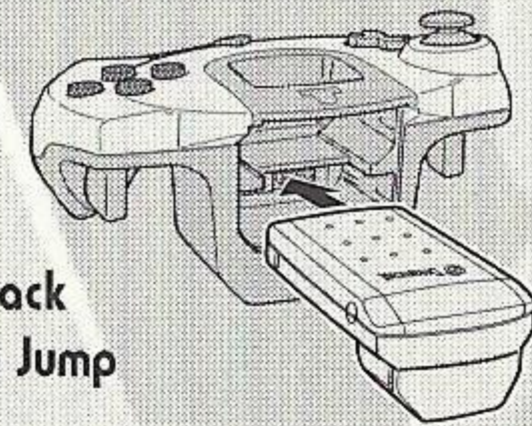
SEGA DREAMCAST ARCADE STICK



SEGA DREAMCAST JUMP PACK™

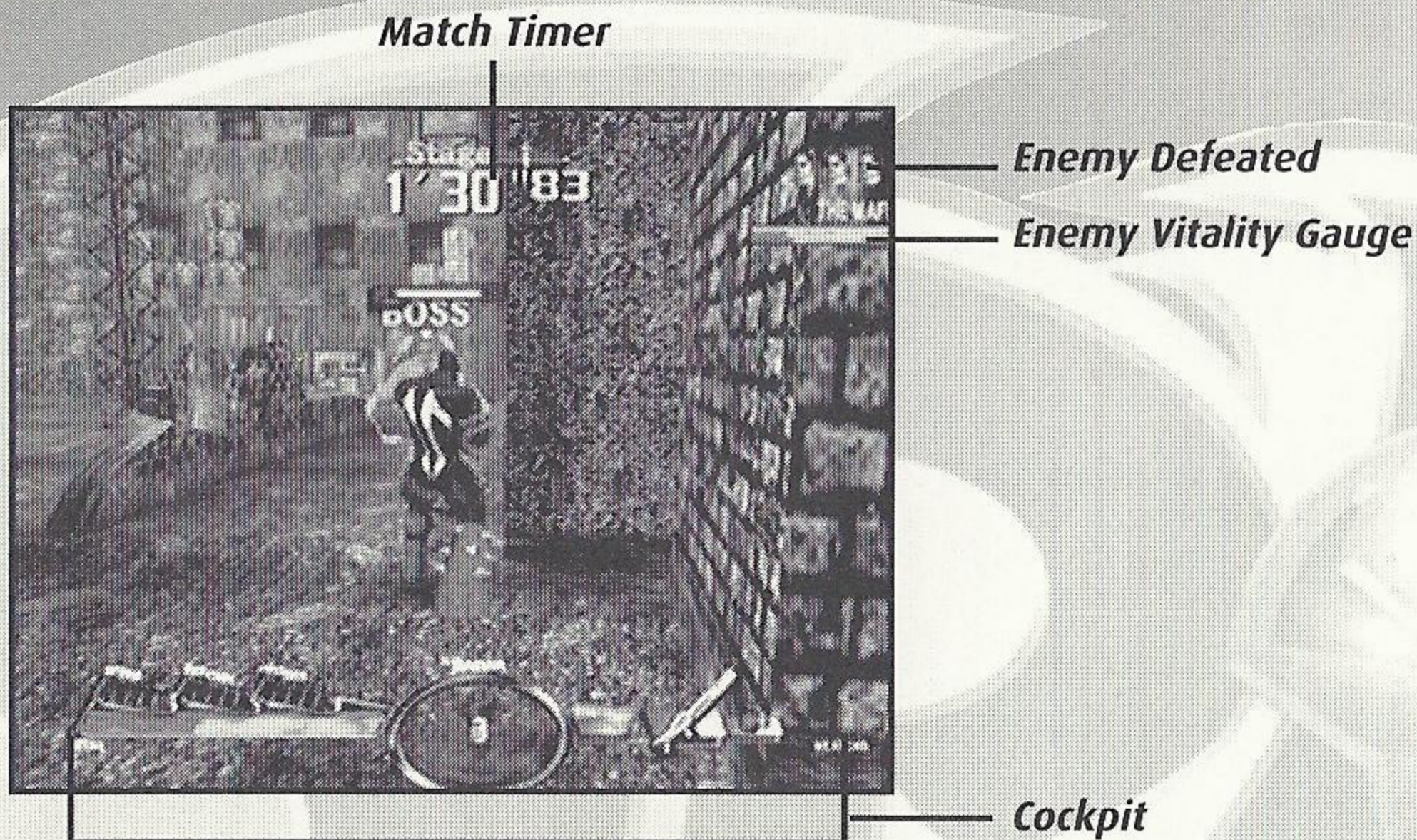
SPAWN supports the Jump Pack vibration peripheral. When inserted into the Expansion Slot of a Sega Dreamcast controller or other compatible peripheral equipment, the Jump Pack provides a vibration effect that can considerably enhance the game play experience. (The Jump Pack cannot be used with the Arcade Stick.)

Note: When the Jump Pack is inserted into Expansion Slot 1 of the Sega Dreamcast controller, the Jump Pack connects, but does not lock. If the controller is jarred, the Jump Pack may fall out during game play or otherwise inhibit game operation.

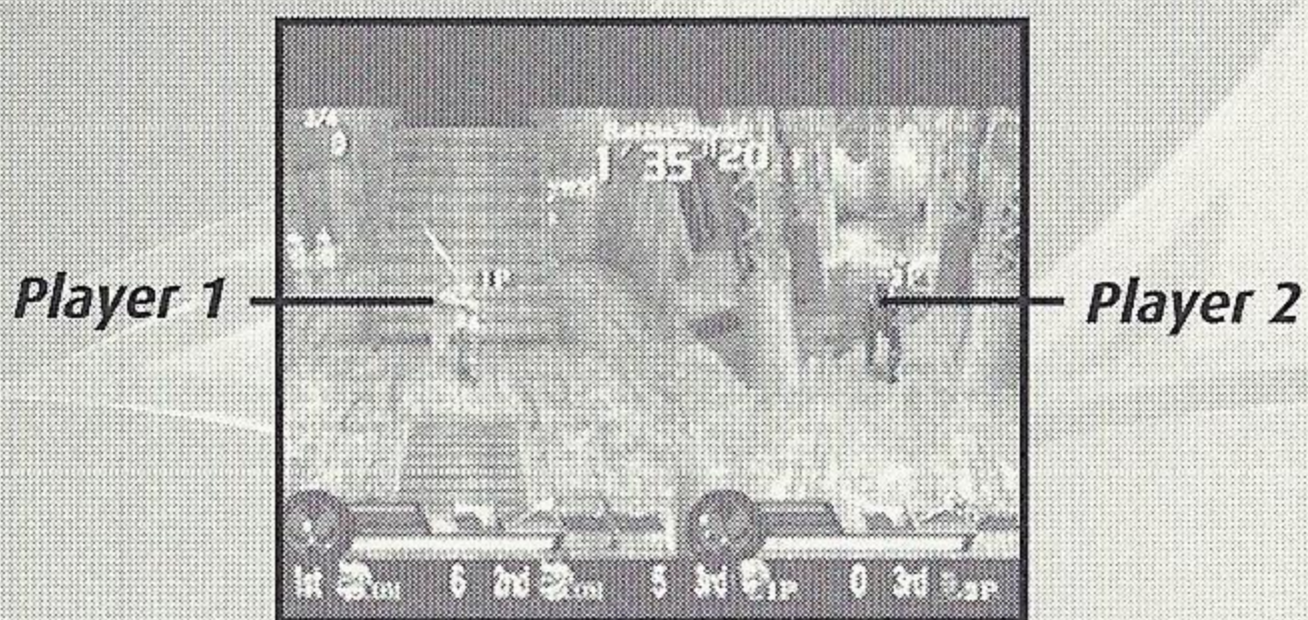


- **SPAWN** is a 1-to-4 player game. Connect controllers or other peripheral equipment before turning on the Sega Dreamcast.
- When using any controller, to return to the Title screen at any point during game play, simultaneously press and hold the A, B, X, Y and Start Buttons. This will cause the Sega Dreamcast to soft-reset the software and display the Title screen.
- For both the controller and Arcade Stick, you can change the default button assignments. See page 13.

UNHOLY COMBAT

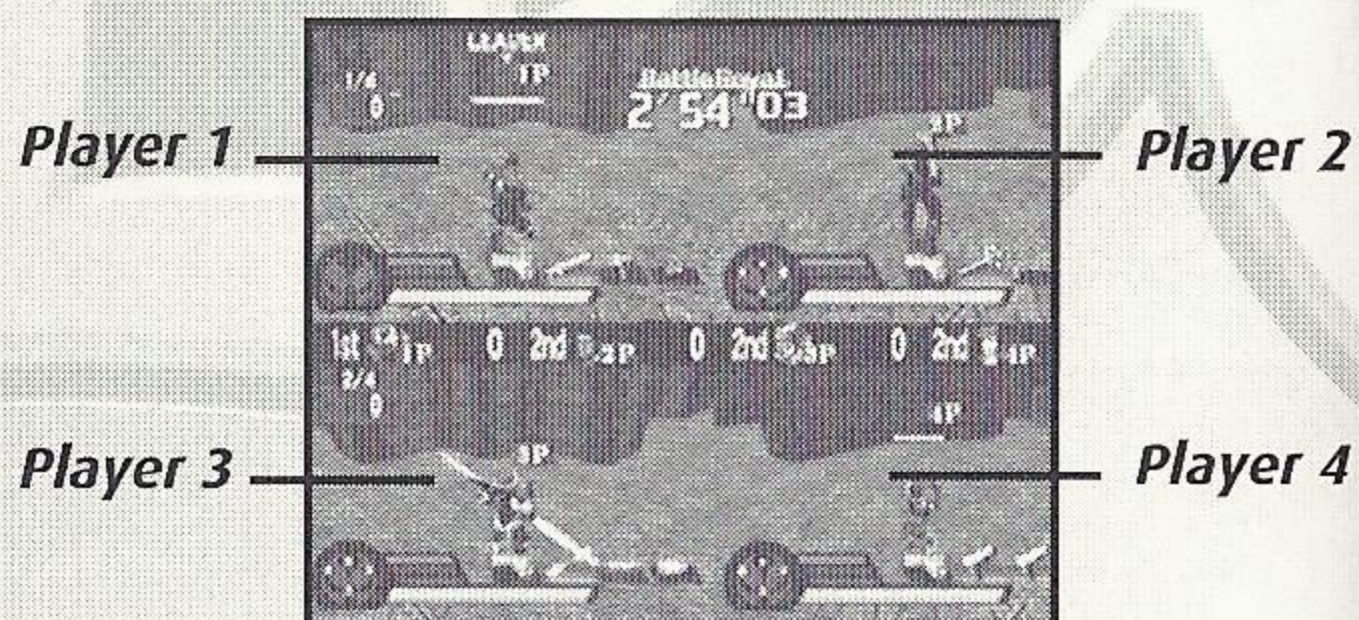


MULTIPLAYER SPLIT SCREEN



2 PLAYER SPLIT SCREEN

When 2 players play Boss Attack, Team Battle or Battle Royal Mode, this split screen appears.



4 PLAYER SPLIT SCREEN

When 3 or 4 players play Team Battle or Battle Royal Mode, this split screen appears.

GAME MODE

The current game mode.

MATCH TIMER

When Match Time reaches 0, the match ends. Match Time is adjustable in Option mode.

ENEMY DEFEATED

Enemies who are no longer in combat.

ENEMY VITALITY GAUGE

Your enemy's ability to fight. When the gauge runs out, the enemy is defeated.

SITUATION MESSAGE

Tells you what happened off screen.

RANKING

In Battle Royal Mode, rankings for all characters are displayed. The 1st place character is ranked as Leader, and the 4th place character earns a cheese, (or a cherry when the point is negative). Characters who have won more than one match in a row earn a star.

TEAM INFORMATION

In Team Battle Mode, each team's score is displayed. Your team members' faces and vitality are also displayed.

BOSS RADAR

Shows the boss character's position.

MESSAGE AREA

Information messages appear here.

COCKPIT

Displays important information about your character. See page 9.

GAME RULES

REVIVE UNLIMITEDLY WITHIN THE TIME LIMIT!

When a character's vitality becomes zero, the character becomes incapable of fighting. When this happens, the character revives with full vitality if the match is still within the time limit, but loses some time (in Boss Attack Mode) and all power-ups.

DEFEAT ENEMIES AND GET K.O. POINTS!

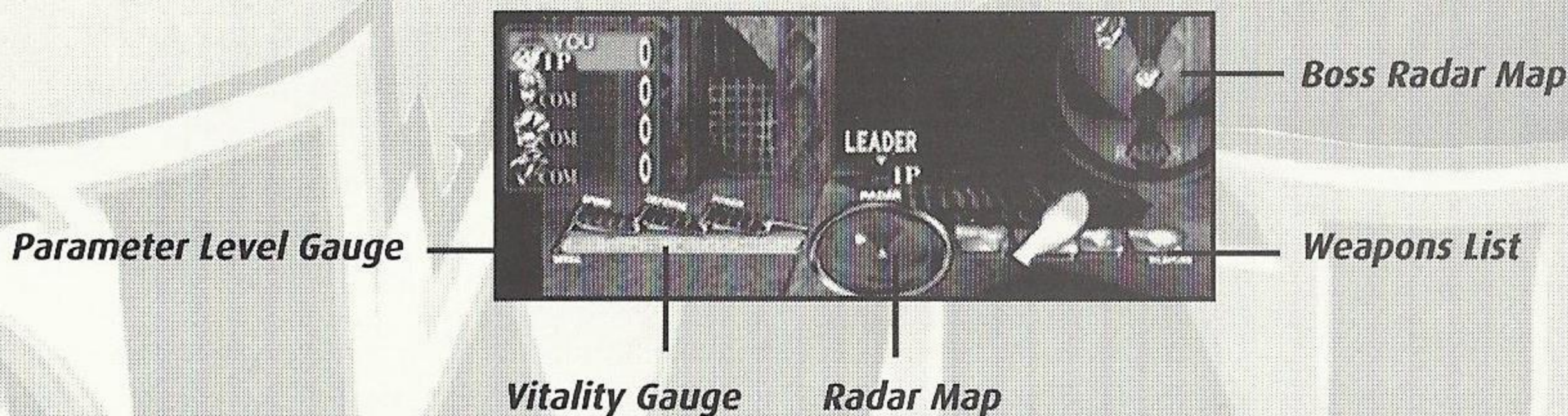
In Team Battle Mode and Battle Royal Mode, you get K.O. Points by defeating an opponent. The player or team with most K.O. Points when time's up is the winner.

When 2 or more players (teams) have the same K.O. Points, the match is decided by the amount of remaining vitality and number of items acquired.

SCORE TABLE

Defeat Leader Character	+ 4 Points	You earn double points when you defeat a Leader character.
Defeat Any Other Character	+ 2 Points	You normally get 2 points if you defeat an opponent.
Defeat a Character Indirectly	+ 1 Point	You get 1 point if an opponent falls from a high place or a map trap and is defeated.
Defeat Yourself	- 3 Points	You lose 3 points when you defeat yourself by your own attack.
Defeat Your Team Member	- 2 Points	You lose 2 points if you defeat your team member.

COCKPIT



PARAMETER LEVEL GAUGE

Each character has 3 parameters (Speed, Defense and Attack) and can improve each parameter up to level 5 by getting a power-up item. Power-up items sometimes appear when you break objects on the stage or knock down an enemy.

- Yellow Speed Power-up Increases your character's speed.
- Blue Defense Power-up Increases your character's defense.
- Red Attack Power-up Increases your character's attack.

VITALITY GAUGE

When a character's vitality drains away, the character becomes incapable of fighting. When this happens, the character revives with full vitality again if the match is within the time limit, but loses some time and all power-up items.

- Vitality Recovery Item Recovers full vitality.

RADAR MAP

Shows fighter's surroundings. You cannot see what's behind you.

BOSS RADAR MAP

In Boss Attack Mode, when the boss character is not in the same area as your fighter, the boss is displayed on the Boss Radar Map.

WEAPONS LIST

Shows the weapons a fighter has. The enlarged weapon is the one the fighter is currently using. A fighter can have up to 3 weapons.

BATTLE SYSTEM

BULLET GAUGE/

When a player's character equips a gun, a Bullet Gauge is displayed. When the gauge runs out of bullets, it is automatically reloaded. If you are holding down the X Button, the weapon is not reloaded. You need to release the button to reload. (Certain weapons have an Energy Gauge instead of a Bullet Gauge. When the energy runs out, you cannot use the weapon until it recharges.)

SIGHT AND RANGE

When you equip a gun and a target is within shooting range, a blue sight is displayed. When you lock-on a target, the site turns green.

1ST PERSON VIEW

Press the Y Button or Left Trigger (A Button for Sega Dreamcast Arcade Stick) to move the camera behind your character and look ahead. If you hold down the button, the screen goes into 1st Person View Mode. Now you can look around with the Directional Button/Joystick, but you cannot move.

CHANGING WEAPONS

Press the B or Z Button to toggle weapons in your inventory. When you find a new weapon, get close to it (the icon will turn red) and press the X Button to equip it. If your weapon inventory is full, the weapon you had is thrown away to equip the new weapon. Think about this when you find a new weapon, so you can toggle to an unneeded weapon before picking up the new one.

DRUMS

When you have no weapon equipped, you can pick up a drum, hold it and throw it. When you have a weapon equipped, you can kick a drum.

ITEM BOXES

Look for hidden Item Boxes that contain powerful weapons or secret items.

INFRARED RAY FILTER

In a Night Vision stage, your character can acquire Infrared Ray Filter ability by collecting a parameter-up item, which makes your vision clearer for a while.

ROLLING ESCAPE

Hold down the Y Button (A Button for Sega Dreamcast Arcade Stick) and input →→ to perform an emergency escape move from enemy's attacks.

GAME MODES

ARCADE MODE

Choose your mode, then choose rules depending on the number of players:

BOSS ATTACK MODE 1-to-2 players, cooperative play only. Defeat a boss character in each stage within the time limit. In 2 player games, a new story will begin after 7 stages.

TEAM BATTLE MODE 1-to-4 players. Red Team and Green Team fight against each other. The match is normally 2-on-2. When one team has only 1 player, choose a team member controlled by the computer (COM).

BATTLE ROYAL MODE 1-to-4 players. Everyone else except yourself is the enemy. When there are not enough players, you can fight against computer-controlled (COM) characters.

TOURNAMENT MODE

Play against the computer. This mode is good for practice.

TEAM BATTLE MODE 1 Player only. Choose your character and your team member (computer-controlled) and fight against the opponent team. As you win, tougher opponents will appear.

RULES: The team with more K.O. Points when time is up is the winner. If you lose, you can continue.

BATTLE ROYAL MODE 1 Player only. A survival mode where everyone except yourself is enemy. As you win, tougher enemies will appear.

RULES: The character who is Leader when time is up is the winner.

In both modes, there is a K.O. Points check at certain stages. If you have earned the required K.O. Points, you can advance to a tougher stage (and the game is automatically saved). If you haven't earned the required K.O. Points, you will need to restart from the beginning.

MODE PLAY

SELECTING A FIGHTER

After selecting a game mode, choose your character. Depending on the game mode and rules, you may also need to choose option character(s) and opponent character(s).

HANDICAP

You can adjust handicaps for human vs human games:

- Radar Map ON/OFF (default is ON)
- Lock-On Mark ON/OFF (default is ON)
- Vitality adjustment From 50% - 150% (default is 100%)

MAP SELECT

In Arcade Mode's **TEAM BATTLE** and **BATTLE ROYAL** modes, you can choose a map. Certain maps have options such as:

- Fog Vision is obscured by fog.
- Night Vision Fight in the darkness.
- Gravitation You can jump higher.
- Melt Down A danger lamp blinks on this stage.

GALLERY

Collect **SPAWN** artwork and special items by meeting various conditions. You can also unlock secret features. Go to the Gallery option from the Game Mode menu to see what you've collected. The Item Collection pages stores the items you acquire in Arcade Mode's **BOSS ATTACK** mode.

OPTION

Adjust various game settings. See page 13.

OPTIONS

DIFFICULTY

Adjust the difficulty level for BOSS ATTACK mode in both Arcade Mode and Tournament Mode.

VIOLENCE LEVEL

Adjust the violence level of the game.

DAMAGE LEVEL

Adjust the amount of damage inflicted by attacks.

MODE TIME

Adjust play time for BOSS ATTACK, TEAM BATTLE and BATTLE ROYAL modes.

PENALTY TIME

Adjust the penalty time for a character's defeat in Arcade Mode's BOSS ATTACK mode.

KEY CONFIG

Change button assignments. You can also assign a special command to a button. Use the Directional Buttons/Joystick to select a setting and press the A Button (A or C Button for Sega Dreamcast Arcade Stick).

- VIBRATION Toggle the Sega Dreamcast Jump Pack vibration ON/OFF.
- DEFAULT Reset the button assignments to default status.
- CANCEL Cancel the previous change.
- DECIDE Confirm the button assignments you changed.

CAMERA DISTANCE

Adjust the distance between your character and the camera.

SOUND ADJUSTMENT

Choose STEREO or MONO depending on your speaker setup.

DEFAULT

Reset all options to the default status.

CHARACTERS

AL SIMMONS

SECRET AGENT OF MISFORTUNE



Al Simmons is equipped with heavy firearms such as a powerful Gatling gun and missile launcher that can discharge three homing bullets at once. However those weapons are disposable. He also has a special ability to throw 3 to 6 grenades at the same time.

SPECIAL ABILITIES & ATTACKS

Triple Missile Launcher

A Button (when Missile Launcher is equipped)

Hand Grenade Rain

A + X Buttons or Right Trigger (when Grenade is equipped)

Knife Slash Combo

A + X Buttons or Right Trigger (press rapidly when no weapon is equipped)

WEAPONS: BOSS ATTACK MODE

Gatling Gun

Grenades

WEAPONS: TEAM BATTLE & BATTLE ROYAL MODE

Missile Launcher

Gatling Gun

Grenades

SPECIAL ABILITIES & ATTACKS

Vitality Recovery

A + X Buttons or Right Trigger (when no weapon is equipped)

Crazy Power

Sam gets mad when vitality is low

Find Weapons

Sam finds weapons more easily by breaking various objects in the stage

WEAPONS: BOSS ATTACK MODE

Shotgun

Dynamite

WEAPONS: TEAM BATTLE & BATTLE ROYAL MODE

Bazooka

Shotgun

Dynamite

SAM

PRIVATE DETECTIVE OF JUSTICE



Though Sam is a bit slow, he is equipped with powerful basic weapons. His most powerful weapon, the bazooka, has 3 bullets. Though Sam's shotgun has short range, it can cover a large area and inflict severe damage.

JESSICA PRIEST

BEAUTIFUL ASSASSIN



Jessica Priest's biggest strength is her speed. Although her main weapon, the handgun, is relatively weak, she carries two of them from the start. She also has various close attacks.

SPECIAL ABILITIES & ATTACKS

Spiral Uppercut

A + X Buttons then X Button or Right Trigger
(when no weapon is equipped)

Dashing Shot

→ then X Button (when two handguns
are equipped)

Jail Kick

A + X Button or Right Trigger (when a gun
is equipped)

WEAPONS: BOSS ATTACK MODE

Handguns (two)

WEAPONS: TEAM BATTLE & BATTLE ROYAL MODE

Handguns (two)

Sub-Machine Gun

SPECIAL ABILITIES & ATTACKS

Recovery

A + X Button or Right Trigger (when Cogliostro's hands are green)

Fire Ball

X Button (after a jump, when Cogliostro's hands are green)

Fire Knife

X Button (after a jump, when Cogliostro's hands are orange)

WEAPONS: BOSS ATTACK MODE

Magic Missile

Lightning Bolt

Fire Wall

WEAPONS: TEAM BATTLE & BATTLE ROYAL MODE

Magic Missile

Lightning Bolt

Fire Wall

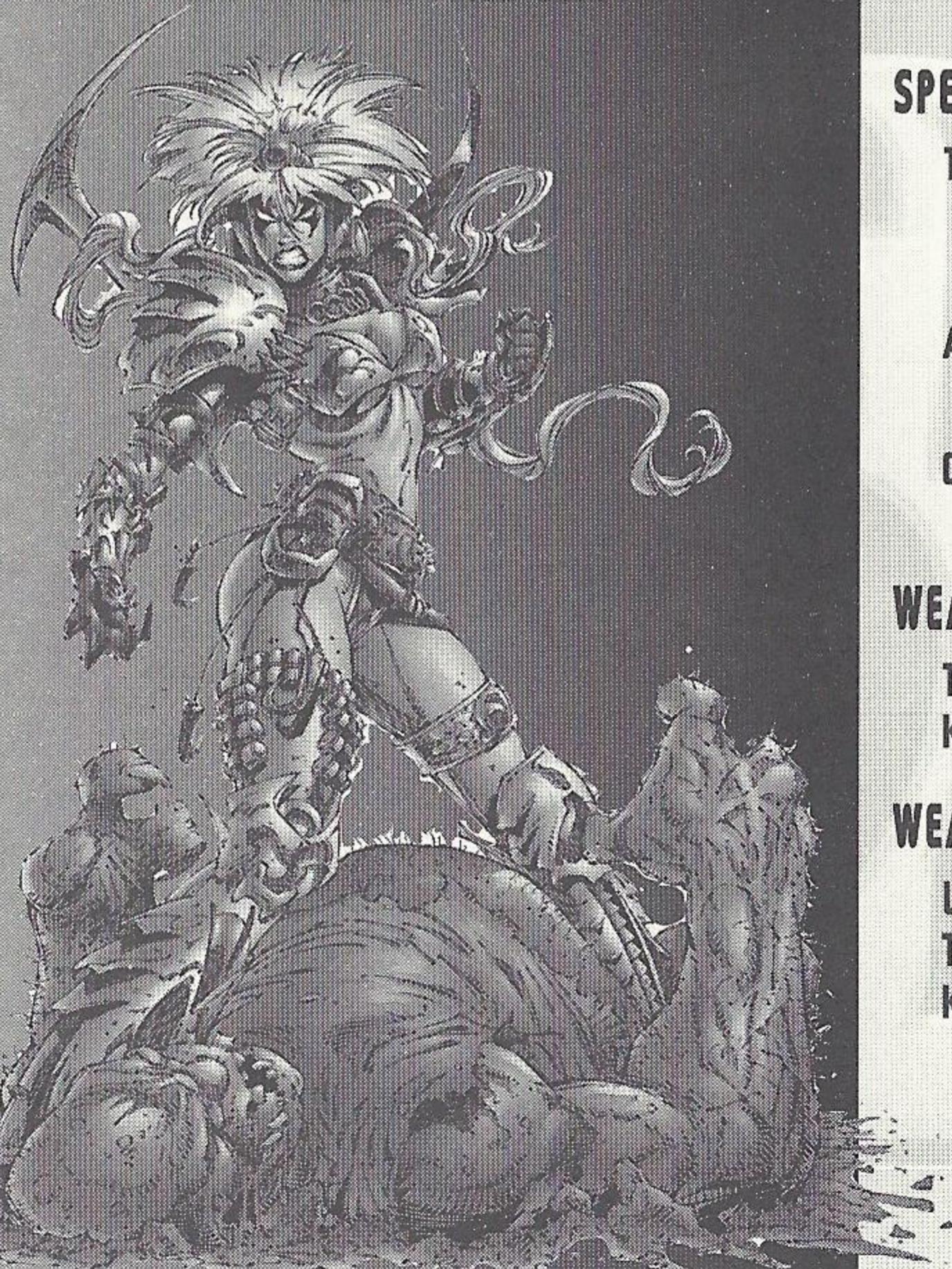
COGLIOSTRO IMMORTAL ARCH ANGEL



Cogliostro can use magic-like special attacks. His primary weapon is the magic missile with high homing ability. His lightning bolt can attack through the wall. In close combat, his fire wall burns away all opponents.

TIFFANY

HUNTER OF THE SKY



Though Tiffany's attacking power is low, she can swing her sword rapidly to perform successive attacks. She also has the abilities to perform double jump, air dash, etc.

SPECIAL ABILITIES & ATTACKS

Tornado Sword

A + X Buttons then X Button or Right Trigger then X Button

Air Dash

A + X Buttons or Right Trigger (after a jump)

Dual Wield

Equip two swords of the same type

WEAPONS: BOSS ATTACK MODE

Tiffany's Sword

Knife

WEAPONS: TEAM BATTLE & BATTLE ROYAL MODE

Lightning Sword

Tiffany's Sword

Knife

BRIMSTONE

WARRIOR OF PURGATORY

SPECIAL ABILITIES & ATTACKS

Flame Shell

A + X Buttons or Right Trigger (when no weapon is equipped)

Second Form

A + X + B Buttons or Right Trigger + B Button (during Second Form, Brimstone loses vitality gradually)

Hell Final

A + X + B Buttons or Right Trigger (during Second Form)

WEAPONS: BOSS ATTACK MODE

Double Saber
Napalm

WEAPONS: TEAM BATTLE & BATTLE ROYAL MODE

Double Saber
Flame Sword
Napalm



Brimstone wields his Doublesaber and crushes his enemies. When he transforms into a different form, he can use powerful napalm bombs.

REDEEMER

HEAVEN'S ASSASSIN



Redeemer is good at both close and long distance combat utilizing his transforming arms. He can shoot powerful bazooka bullets from his Gun Arm at the cost of his own vitality.

SPECIAL ABILITIES & ATTACKS

Vitality Drain

A + X Buttons or Right Trigger (during Spear Arm)

Bomb Final

A + X Buttons or Right Trigger (during Gun Arm, at the cost of some vitality)

Dash Homing

A + X Buttons or Right Trigger (when no weapon is equipped, at the cost of some vitality)

WEAPONS: BOSS ATTACK MODE

Spear Arm
Sword Arm
Gun Arm

WEAPONS: TEAM BATTLE & BATTLE ROYAL MODE

Spear Arm
Sword Arm
Gun Arm

SPECIAL ABILITIES & ATTACKS

Spike Arrow

A + X Buttons or Right Trigger (when Normal Lance is equipped)

Tornado Turn

A + X Buttons or Right Trigger (when Battle Lance is equipped)

Hovering

A Button (press rapidly after a jump)

WEAPONS: BOSS ATTACK MODE

Normal Lance

Knife

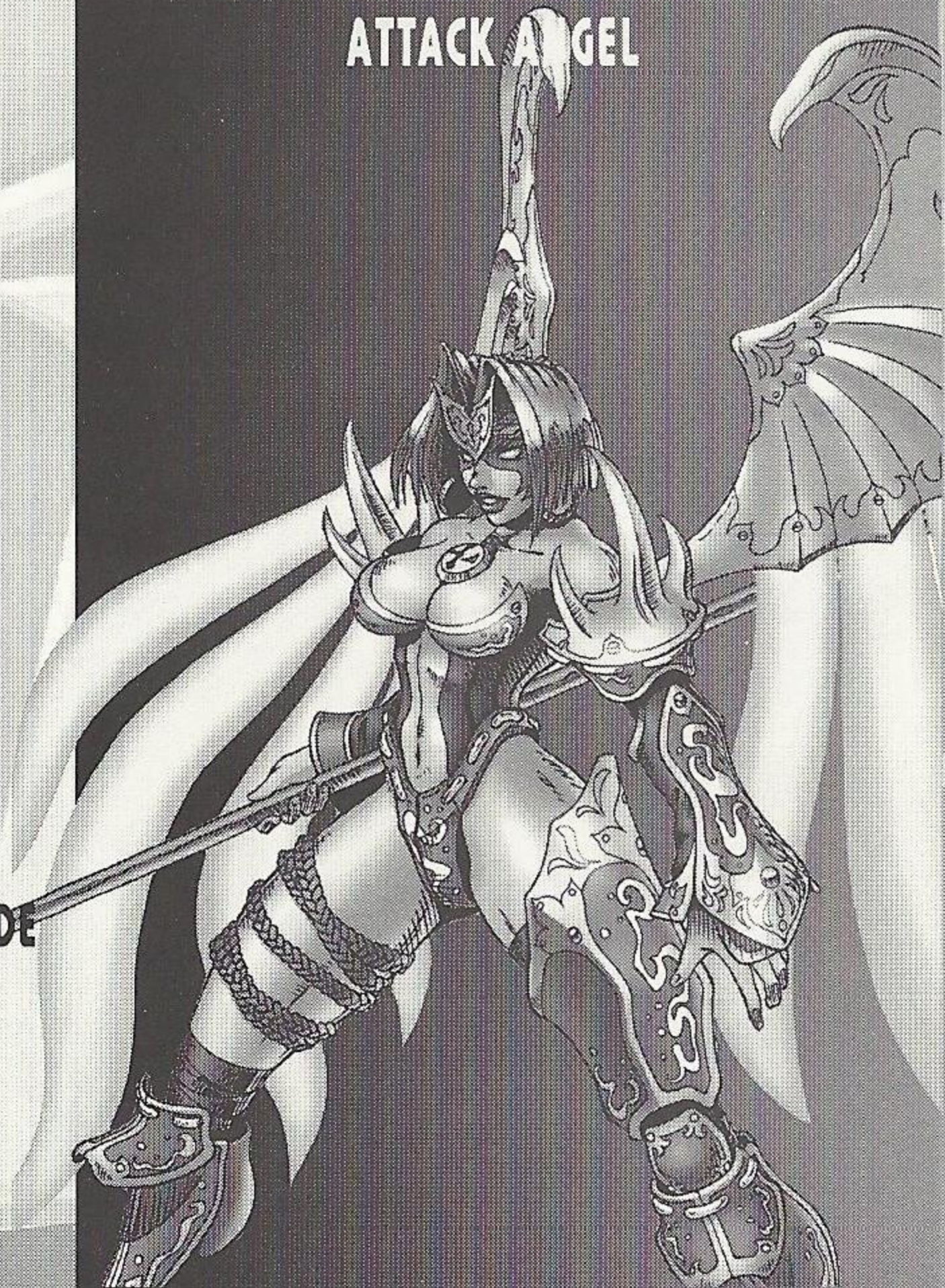
WEAPONS: TEAM BATTLE & BATTLE ROYAL MODE

Battle Lance

Normal Lance

Knife

GRACE ATTACK ANGEL



Grace's main weapon for close combat is her long lance, which can inflict severe damage. Grace can also hover in the air and is good at surprising attacks from the air.

CLOWN

DEVILISH PRANKSTER



When he's in a human form, he is not very fast and doesn't have much power. However, when he transforms into Violator, he becomes the strongest fighter in attacking power and special abilities.

SPECIAL ABILITIES & ATTACKS

Magic Hand Punch

A + X Buttons or Right Trigger (when no weapon is equipped)

Transformation into Violator

A + X + B Buttons or Right Trigger + B Button (during Transformation, Clown loses his vitality gradually)

Hell Fire

A + X Buttons or Right Trigger (during Transformation, after weapon change)

WEAPONS: BOSS ATTACK MODE

Chainsaw

WEAPONS: TEAM BATTLE & BATTLE ROYAL MODE

Chainsaw

Missile Launcher

Balloon Bomb

TREMOR

MARAUDING CYBORG

SPECIAL ABILITIES & ATTACKS

Zoom Punch

A + X Buttons or Right Trigger (when Claw is equipped)

Double Zoom

A + X Buttons or Right Trigger (when two Claws are equipped)

Super Armor Dash

A + X Buttons or Right Trigger (when no weapon is equipped)

WEAPONS: BOSS ATTACK MODE

Iron Claw

WEAPONS: TEAM BATTLE & BATTLE ROYAL MODE

Battle Claw

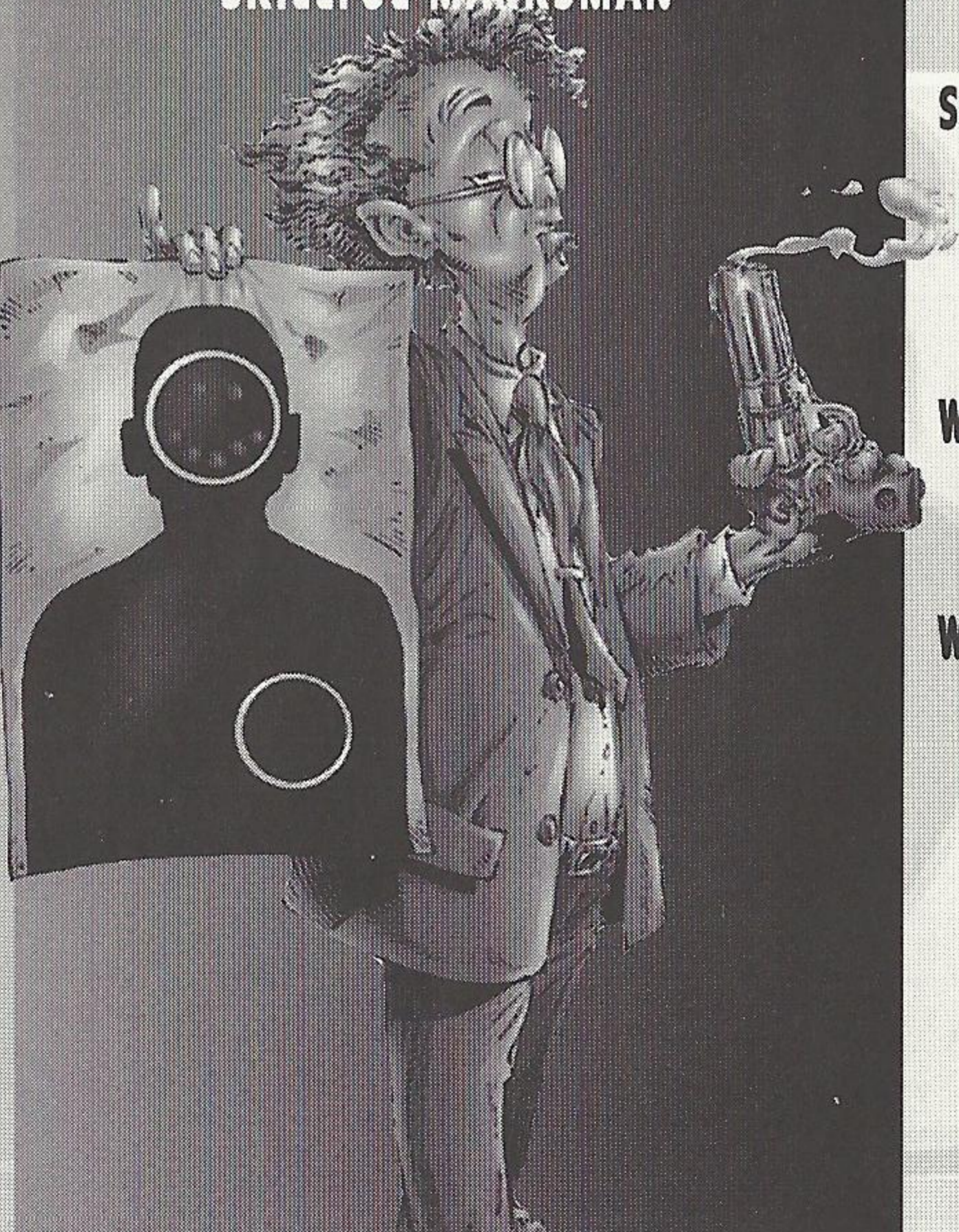
Iron Claw



Tremor is good at close combat with his powerful attacks, but he can also attack an enemy at long range with his flexible arms. However, he cannot equip any other weapon than his own claws.

TWITCH

SKILLFUL MARKSMAN



Twitch uses rifle-type weapons as his primary weapon, which have very long range. In Sniper Mode, Twitch does not appear on opponents' radar. He can also use such special weapons as a flame thrower, laser gun, etc.

SPECIAL ABILITIES & ATTACKS

Sniper Style

Equip a rifle. When Twitch is in Sniper Mode, he doesn't appear on opponents' radar and he cannot be locked-on.

WEAPONS: BOSS ATTACK MODE

Revolver
Rifle

WEAPONS: TEAM BATTLE & BATTLE ROYAL MODE

Revolver
Rifle
Flame Thrower

SPECIAL ABILITIES & ATTACKS

Chain Offense

A + X Buttons or Right Trigger (when unarmed, Spawn loses vitality gradually)

Jump Up

A + X + B Buttons or Right Trigger + B Button

Two Guns

A + X Buttons or Right Trigger (Spawn uses two guns at the same time; equip one more of the same gun)

WEAPONS: BOSS ATTACK MODE

Machine Gun

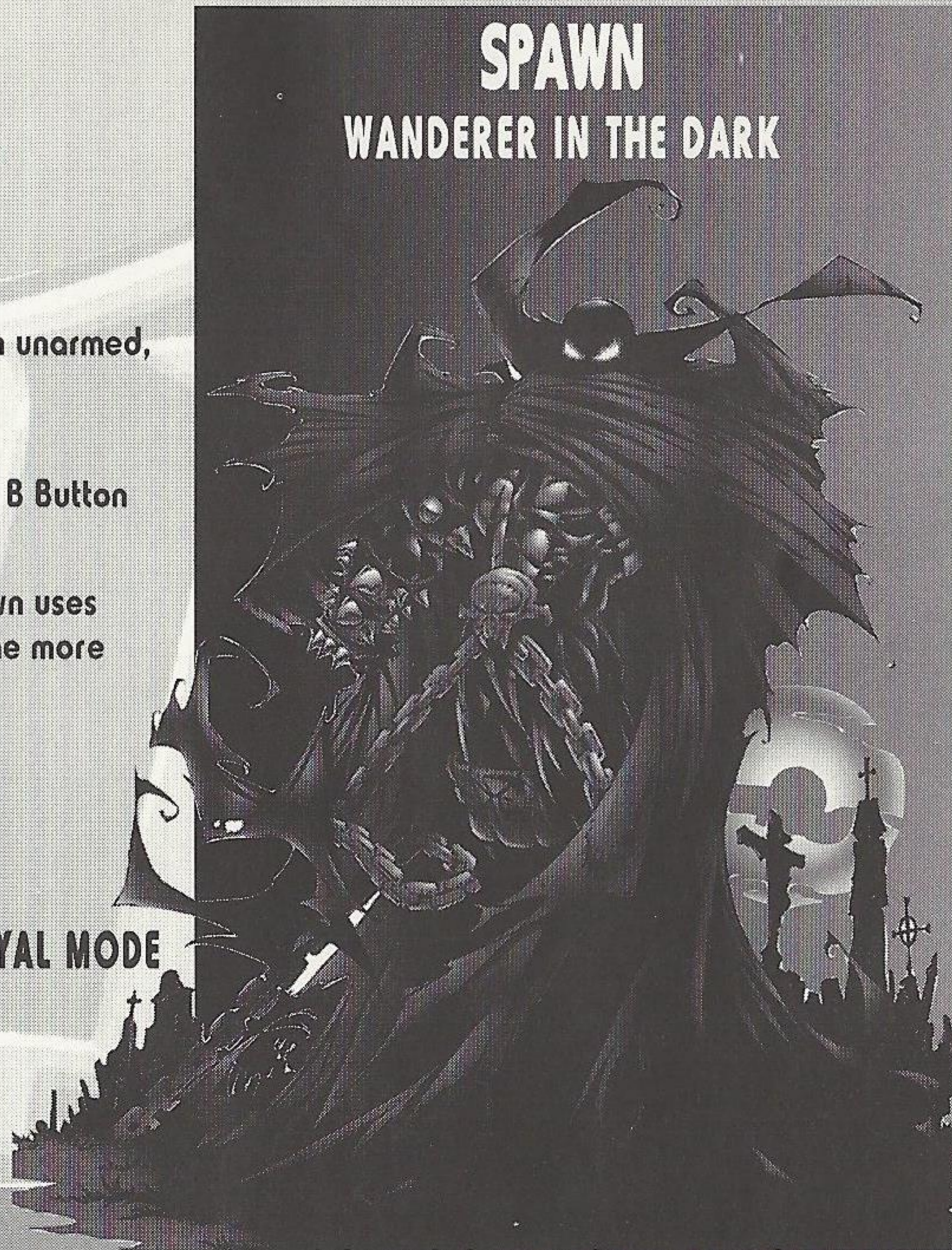
Grenades

WEAPONS: TEAM BATTLE & BATTLE ROYAL MODE

Machine Gun

Sub-Machine Gun

Grenades

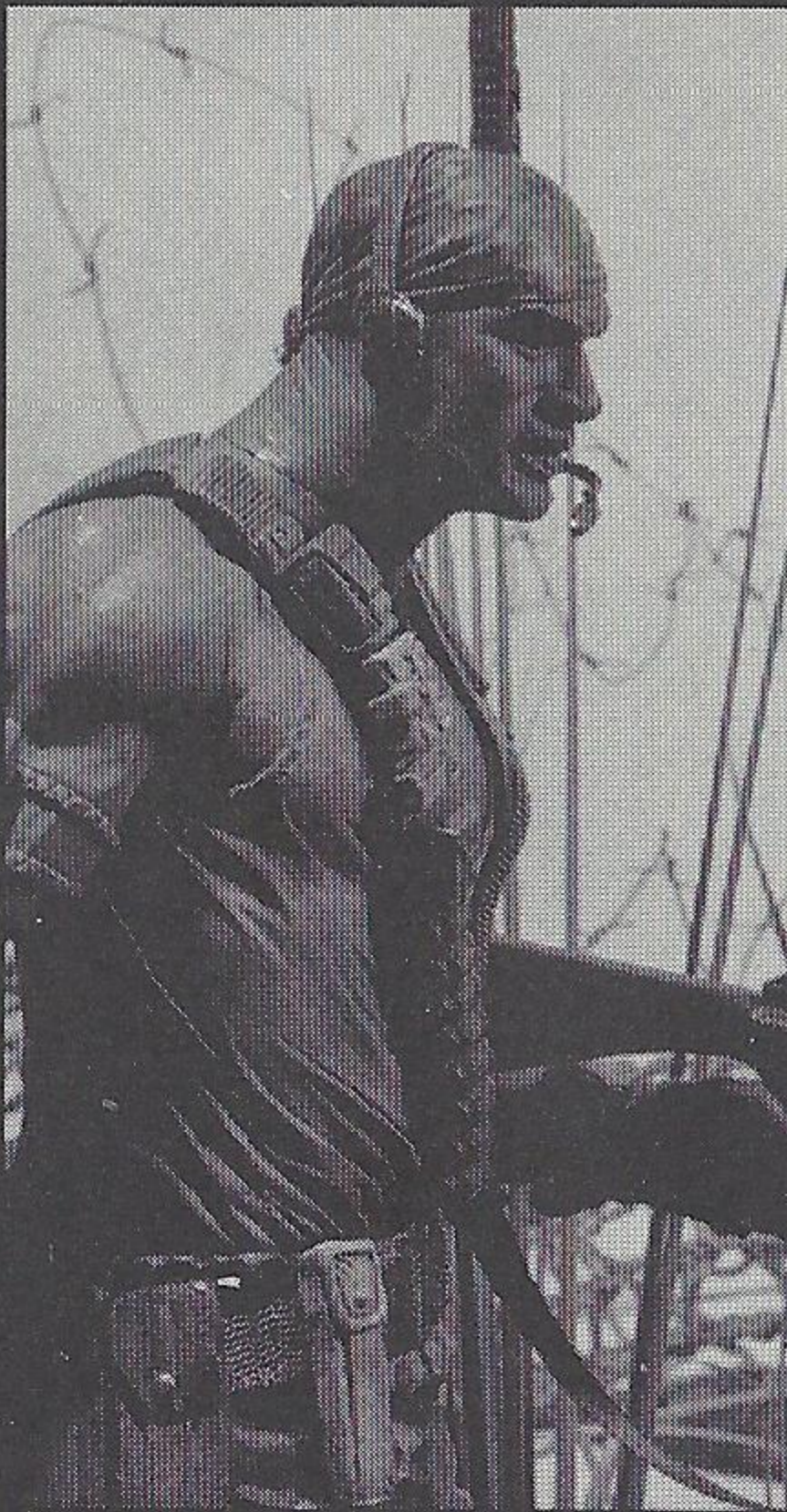


SPAWN

WANDERER IN THE DARK

Spawn's basic fighting style is to attack enemies at long range with a semi-automatic machine gun. His dependable mobility and defensive ability make Spawn an easy-to-handle character.

TOYS. NOT TRICK PHOTOGRAPHY.



Spawn, Al Simmons, Medieval Spawn, Clown, Malebolgia and Tiffany the Angel are part of the **Spawn Classic: Series 17** line of toys. Go to Spawn.com for more information on all of the action figures McFarlane Toys is producing and where to buy them.

SPAWN.COMBAT

toys | movies | tv | video games | comic books.



SPAWN[®]

C L A S S I C .

SPAWN CLASSIC: Series 17 character names and likenesses are
TM and © 2000 Todd McFarlane Productions, Inc. All Rights Reserved.

McFARLANE TOYS

IT'S AN ATTITUDE





TAKE IT TO THE EDGE. CAPCOM EDGE.

COLLECT CAPCOM EDGE PROOF-OF-PURCHASE POINTS EVERY TIME YOU BUY ANY SPECIALLY MARKED CAPCOM GAME TO EARN AMAZING GEAR LIKE SHIRTS, GAMES OR EVEN A PORTABLE CD PLAYER! PLUS, YOU'LL BE ABLE TO WIN QUARTERLY SWEEPSTAKES WITH KILLER PRIZES - LIKE YOUR OWN SIGNATURE SIZE ARCADE MACHINE.

DON'T FIGHT IT! SIGN UP TODAY.

JUST COMPLETE THIS ENTRY FORM OR SEND A 3X5 CARD WITH YOUR NAME, ADDRESS, PHONE NUMBER AND DATE OF BIRTH, AND PARENT'S SIGNATURE (IF UNDER 18) TO:

CAPCOM EDGE 475 OAKMEAD PARKWAY, SUNNYVALE, CA 94086

Offer valid 9/1/99 to 1/31/01. Maximum 2 awards per name and/or address. To claim awards send a completed prize redemption form, Capcom Edge or Fighters Edge proof-of purchase points (or original UPC code) and shipping and handling fees to Capcom Entertainment (see www.capcom.com for complete details). Award merchandise is subject to change and subject to availability while supply lasts. Allow 10-12 weeks for delivery. Items may be shipped separately. Extra points on orders will not be refunded. Points cannot be transferred or sold to another party for use for any other purpose. Capcom Edge points cannot be redeemed for cash. Capcom Entertainment may cancel, rescind or extend this offer at any time. Points are subject to verification. Only original Capcom Edge or Fighters Edge proof of purchase points or original UPC codes are valid from retail packages or from authorized Capcom Edge or Fighters Edge certificates. No reproductions allowed. Points valid only once per game purchase per person. The Capcom Edge program is valid only with current Capcom and Fighters Edge games. Those under age 18 must have parent or guardian signature to participate. The Capcom Edge program is operated by Capcom Entertainment and is open to residents of the United States and Canada excluding Quebec. Fraudulent claims will be voided. Proof of mailing does not constitute proof of delivery. Capcom is not responsible for lost, incomplete, damaged or illegible claim forms. Certified mail is recommended for orders. Sweepstakes winners will be determined in a random drawing from registered Capcom Edge members. No purchase necessary. Odds of winning depend on number of registered Capcom Edge members. Sony Computer Entertainment America, Nintendo of America and Sega of America are in no way affiliated with this program. Employees of Capcom Entertainment, its agencies, vendors and their immediate family members are not eligible for this offer. All decisions of Capcom Entertainment on all matters relating to this promotion are final. Recipients agree that awards are presented on the condition Capcom Entertainment, Sony Computer Entertainment America, Nintendo of America, Sega of America, their affiliates, subsidiaries, divisions or related companies, have no liability whatsoever, for any damages, injuries, losses or expenses of any kind resulting from acceptance, possession or use of the award. Award recipient is responsible for any and all Federal, State and local taxes if necessary. Offer is only good in United States and Canada excluding Quebec. Void where prohibited by law. Other restrictions may apply.

All orders must be postmarked by 1/31/01.

© CAPCOM CO., LTD. 2000. © CAPCOM U.S.A., INC. 2000. ALL RIGHTS RESERVED. CAPCOM and the CAPCOM LOGO are registered trademarks of CAPCOM CO., LTD. CAPCOM EDGE is a trademark of CAPCOM CO., LTD.

CAPCOM®

www.capcom.com

NAME
ADDRESS
CITY STATE ZIP CODE
PHONE NUMBER
DATE OF BIRTH
PARENT'S SIGNATURE (IF UNDER THE AGE OF 18)

SPAWN

For information on Capcom's Privacy Policy visit: www.capcom.com

TODD MCFARLANE ENTERTAINMENT

Executive Producers: Todd McFarlane and Terry Fitzgerald; Producer: Keri Catalano; Art Director: Brent Ashe; Special Thanks to: Sheila Egger, Deborah Marvin, Rick Privman, Yumiko Miyano, Greg Capullo and Haberlin/Kemp.

CAPCOM ENTERTAINMENT

Manual Design: Hanshaw Ink & Image; Marketing: Todd Thorson, Sean Mylett, Robert Johnson; Creative Services: Jennifer Deauville and Marion Clifford; Package Design: Michi Morita and Jamie Gibson; Translation: Masayuki Fukumoto; PR: Melinda Mongelluzzo, Matt Atwood and Carrie Megenity; Special thanks to: Tom Shiraiwa, Miki Takano, Bill Gardner, Robert Lindsey and Customer Service.

90-DAY LIMITED WARRANTY

CAPCOM ENTERTAINMENT, INC. ("CAPCOM") warrants to the original consumer that this Sega Dreamcast GD-ROM ("GD-ROM") from CAPCOM shall be free from defects in material and workmanship for a period of 90 days from date of purchase. If a defect covered by this warranty occurs during this 90-day warranty period, CAPCOM will replace the GD-ROM free of charge.

To receive this warranty service:

1. Notify the CAPCOM Consumer Service Department of the problem requiring warranty service by calling (408) 774-0400. Our Consumer Service Department is in operation from 8:30 a.m. to 5:00 p.m. Pacific Time, Monday through Friday.
2. If the CAPCOM service technician is unable to solve the problem by phone, he/she will instruct you to return the entire GD-ROM to CAPCOM freight prepaid at your own risk of damage or delivery. We recommend sending your GD-ROM certified mail. Please include your sales slip or similar proof-of-purchase within the 90-day warranty period to:

CAPCOM
Consumer Service Department
475 Oakmead Parkway
Sunnyvale, CA 94086

This warranty shall not apply if the GD-ROM has been damaged by negligence, accident, unreasonable use, modification, tampering or by other causes unrelated to the defective materials or workmanship.

REPAIRS AFTER EXPIRATION OF WARRANTY

If the GD-ROM develops a problem after the 90-day warranty period, you may contact the CAPCOM Consumer Service Department at the phone number noted previously. If the CAPCOM service technician is unable to solve the problem by phone, he/she may instruct you to return the defective GD-ROM to CAPCOM freight prepaid at your own risk of damage or delivery, enclosing a check or money for \$20.00 (U.S. funds only) payable to CAPCOM. We recommend sending your GD-ROM certified mail. CAPCOM will replace the GD-ROM, subject to the conditions above. If replacement GD-ROMs are not available, the defective product will be returned to you and the \$20.00

SPAWN
20 PTS.



SPAWN
20 PTS.

payment refunded.

WARRANTY LIMITATIONS

ANY APPLICABLE IMPLIED WARRANTIES, INCLUDING WARRANTIES OF MERCHANTABILITY AND FITNESS FOR A PARTICULAR PURPOSE, ARE HEREBY LIMITED TO NINETY (90) DAYS FROM THE DATE OF PURCHASE AND ARE SUBJECT TO THE CONDITIONS SET FORTH HEREIN. IN NO EVENT SHALL CAPCOM BE LIABLE FOR CONSEQUENTIAL OR INCIDENTAL DAMAGES RESULTING FROM THE BREACH OF ANY EXPRESS OR IMPLIED WARRANTIES.

The provisions of this warranty are valid in the United States and Canada only. Some states and provinces do not allow limitations on how long an implied warranty lasts or exclusions of consequential or incidental damages, so the above limitations and exclusions may not apply to you. This warranty gives you specific legal rights, and you may have other rights, which vary, from state to state or province to province.

ESRB RATING

This product has been rated by the Entertainment Software Rating board. For information about the ESRB rating, or to comment about the appropriateness of the rating, please contact the ESRB at 1-800-771-3772.

Sega is registered in the US Patent and Trademark Office. Sega, Dreamcast and the Dreamcast logo are either registered trademarks or trademarks of Sega Enterprises, LTD. All Rights Reserved. Made and printed in the USA. WARNING: Operates only with NTSC televisions and Sega Dreamcast systems purchased in North and South America (except Argentina, Paraguay and Uruguay). Will not operate with any other televisions or Sega Dreamcast systems. Product covered under one or more of the following U.S. Patents: 5,460,374; 5,525,770; 5,627,895; 5,688,173; 4,442,486; 4,454,594; 4,462,076; Re. 35,839; Japanese Patent No. 2870538, (Patents pending in U.S. and other countries); Canada Patent No. 1,183,276.

The ratings icon is a trademark of the Interactive Digital Software Association. Sega of America Dreamcast, Inc., P.O. Box 7620, San Francisco, CA 94120.

SEGA



SPAWN



SPAWN
20 PTS.

SPAWN
20 PTS.



TAKE IT TO THE EDGE CAPCOM EDGE

JOIN THE RANKS OF THE WORLD'S GAMING ELITE AND EARN CAPCOM EDGE POINTS EVERY TIME YOU BUY THE CAPCOM GAMES YOU LOVE. COLLECT MORE POINTS AND GET ALL KINDS OF COOL STUFF LIKE T-SHIRTS, WATCHES, SUNGLASSES PORTABLE STEREOS AND OTHER CAPCOM EDGE GEAR DON'T FIGHT IT! JOIN TODAY!

CAPCOM ENTERTAINMENT, INC. 475 Oakmead Parkway, Sunnyvale, CA 94086
©CAPCOM CO., LTD. 2000 ©CAPCOM U.S.A., INC. 2000. ALL RIGHTS RESERVED. A Todd McFarlane Entertainment, Inc. Production. SPAWN, its logo, symbol, characters, and all related characters and all related indicia are registered trademarks of Todd McFarlane Productions, Inc. ©2000 by Todd McFarlane Productions, Inc. All Rights Reserved. CAPCOM and the CAPCOM logo are registered trademarks of CAPCOM CO., LTD. CAPCOM EDGE is a trademark of CAPCOM CO., LTD. Sega, Dreamcast, and the Dreamcast swirl, are either registered trademarks or trademarks of Sega Enterprises, LTD. All Rights Reserved. The ratings icon is a registered trademark of the Interactive Digital Software Association. All other marks are the property of their respective holders
Sega is registered in the US Patent and Trademark Office. Sega, Dreamcast and the Dreamcast logo are either registered trademarks or trademarks of Sega Enterprises, LTD. All Rights Reserved. Made and printed in the USA.
WARNING: Operates only with NTSC televisions and Sega Dreamcast systems purchased in North and South America (except Argentina, Paraguay and Uruguay). Will not operate with any other televisions or Sega Dreamcast systems. Product covered under one or more of the following U.S. Patents: 5,460,374; 5,525,770; 5,627,895; 5,688,173; 4,442,486; 4,454,594; 4,462,076; Re. 35,839; Japanese Patent No.2870538, (Patents pending in U.S. and other countries); Canada Patent No. 1,183,276. The ratings icon is a registered trademark of the Interactive Digital Software Association. Sega of America Dreamcast, Inc, P.O. Box 7639, San Francisco, CA 94120.

CAPCOM

SEGA