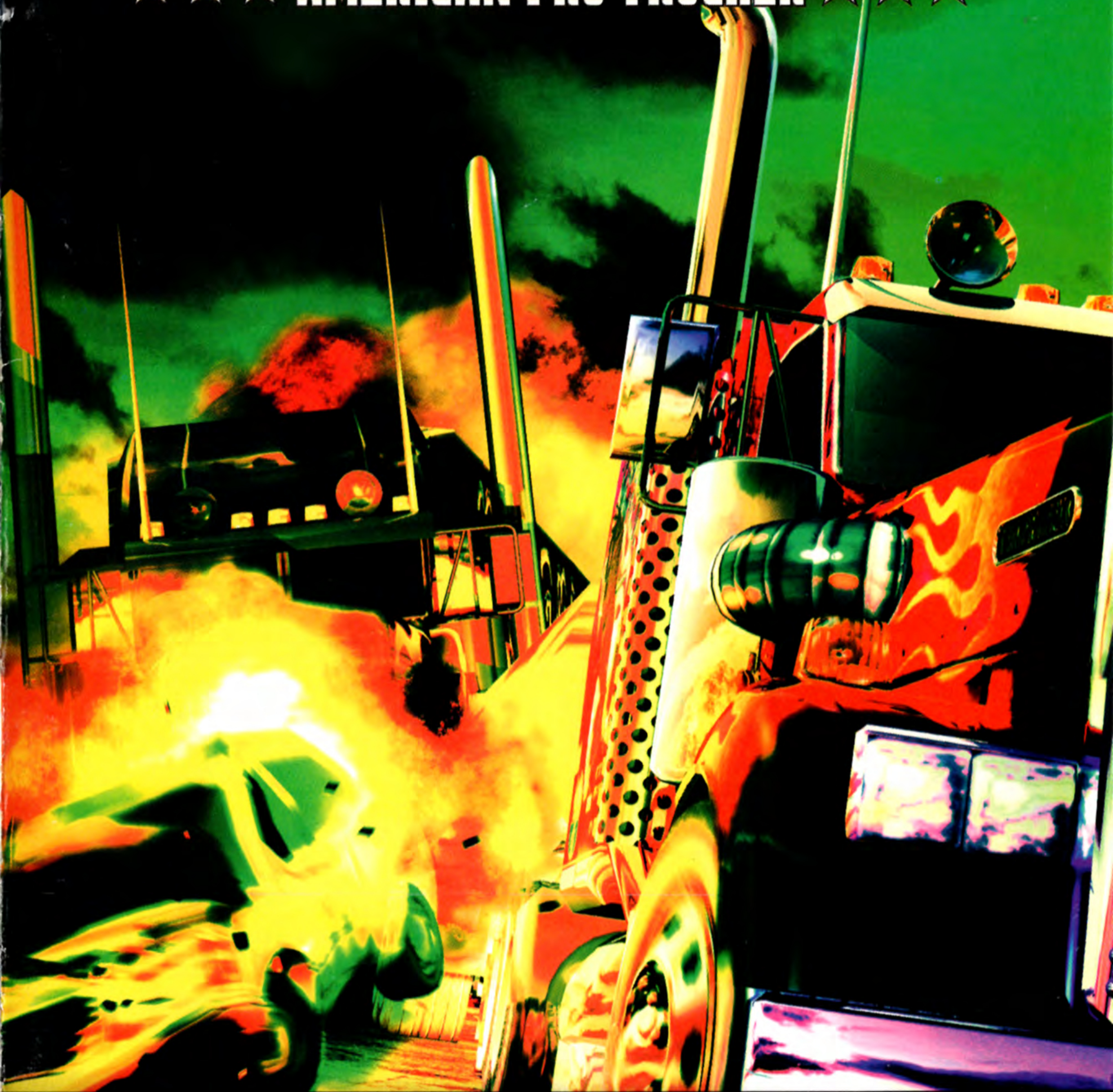


EIGHTEEN **18** WHEELER™

★ ★ ★ AMERICAN PRO TRUCKER ★ ★ ★



EVERYONE
E
CONTENT RATED BY
ESRB

SEGA®
CREATED BY AND PRODUCED BY

AKKlaim®
CONVERTED, PUBLISHED AND DISTRIBUTED BY

WARNING: READ BEFORE USING YOUR PLAYSTATION®2 COMPUTER ENTERTAINMENT SYSTEM.

A very small percentage of individuals may experience epileptic seizures when exposed to certain light patterns or flashing lights. Exposure to certain patterns or backgrounds on a television screen or while playing video games, including games played on the PlayStation 2 console, may induce an epileptic seizure in these individuals. Certain conditions may induce previously undetected epileptic symptoms even in persons who have no history of prior seizures or epilepsy. If you, or anyone in your family, has an epileptic condition, consult your physician prior to playing. If you experience any of the following symptoms while playing a video game – dizziness, altered vision, eye or muscle twitches, loss of awareness, disorientation, any involuntary movement, or convulsions – IMMEDIATELY discontinue use and consult your physician before resuming play.

WARNING TO OWNERS OF PROJECTION TELEVISIONS:

Do not connect your PlayStation 2 console to a projection TV without first consulting the user manual for your projection TV, unless it is of the LCD type. Otherwise, it may permanently damage your TV screen.

USE OF UNAUTHORIZED PRODUCT:

The use of software or peripherals not authorized by Sony Computer Entertainment America may damage your console and/or invalidate your warranty. Only official or licensed peripherals should be used in the controller ports or memory card slots.

HANDLING YOUR PLAYSTATION 2 FORMAT DISC:

- This disc is intended for use only with PlayStation 2 consoles with the NTSC U/C designation.**
- Do not bend it, crush it or submerge it in liquids.**
- Do not leave it in direct sunlight or near a radiator or other source of heat.**
- Be sure to take an occasional rest break during extended play.**
- Keep this compact disc clean. Always hold the disc by the edges and keep it in its protective case when not in use. Clean the disc with a lint-free, soft, dry cloth, wiping in straight lines from center to outer edge. Never use solvents or abrasive cleaners.**

EIGHTEEN

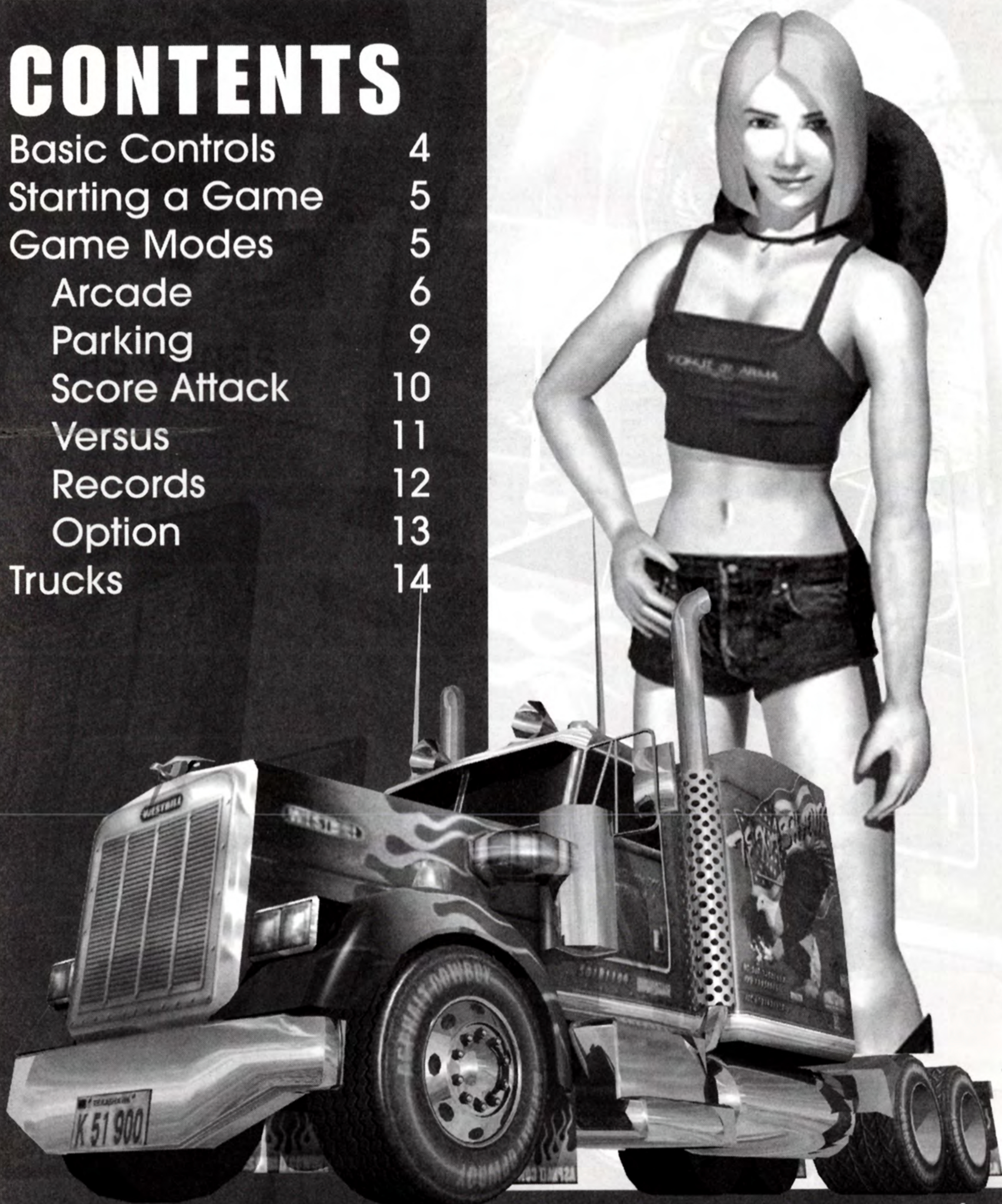
18 WHEELER

WHEELER™

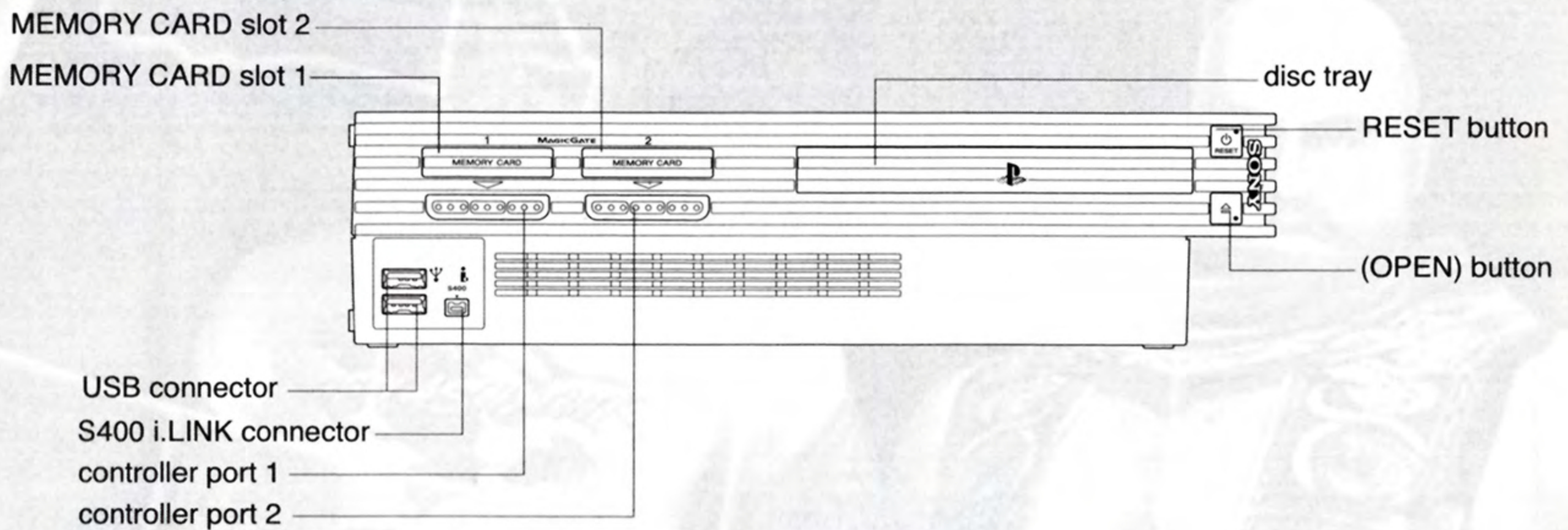
☆☆☆ AMERICAN PRO TRUCKER ☆☆☆

CONTENTS

Basic Controls	4
Starting a Game	5
Game Modes	5
Arcade	6
Parking	9
Score Attack	10
Versus	11
Records	12
Option	13
Trucks	14



GETTING STARTED

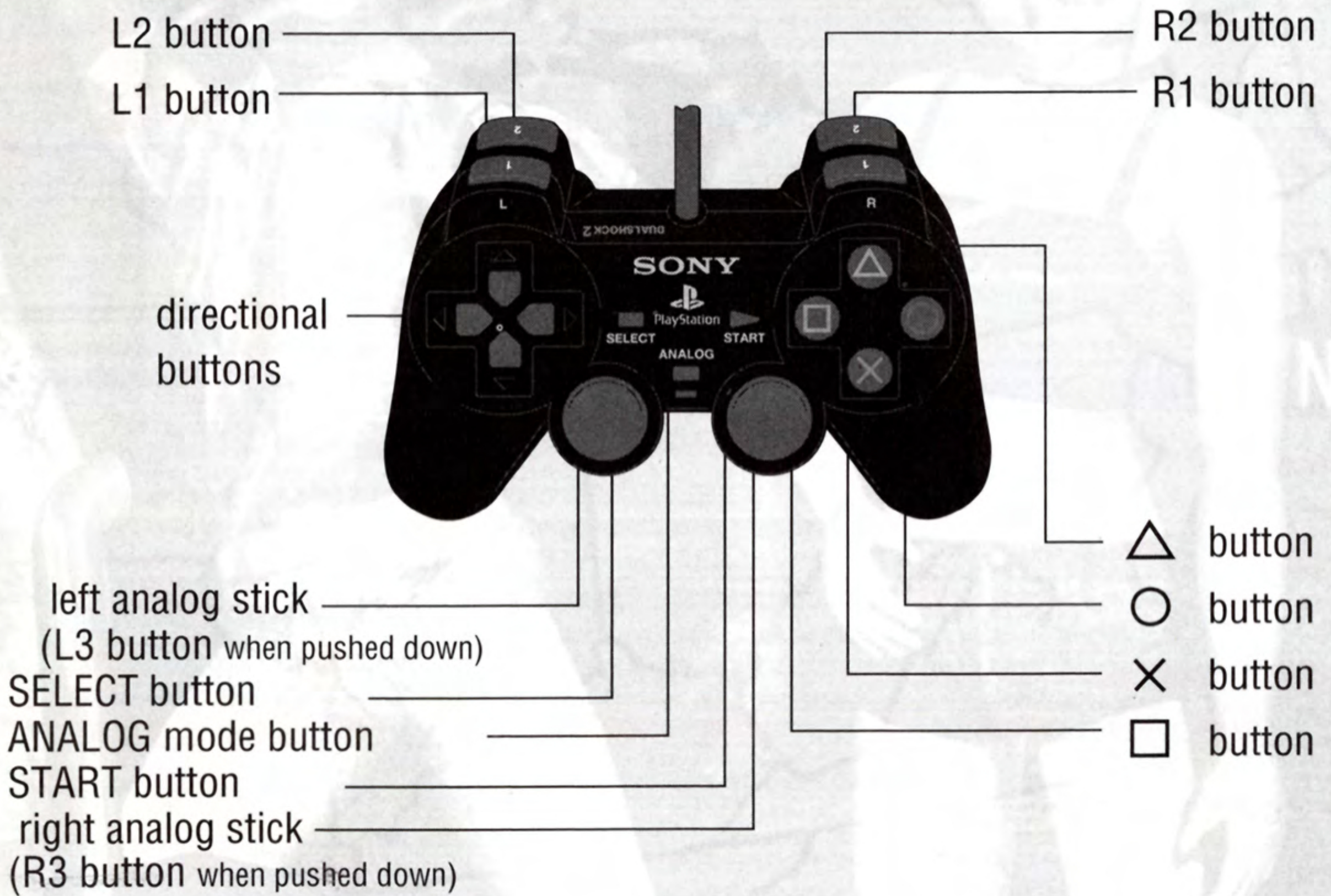


Set up your PlayStation®2 computer entertainment system according to the instructions in its Instruction Manual. Make sure the MAIN POWER switch (located on the back of the console) is turned on. Press the RESET button. When the power indicator lights up, press the open button and the disc tray will open. Place the 18 WHEELER™ AMERICAN PRO TRUCKER disc on the disc tray with the label side facing up. Press the open button again and the disc tray will close. Attach game controllers and other peripherals, as appropriate. Follow on-screen instructions and refer to this manual for information on using the software.

If you wish to save your game, insert a Memory Card (8MB) (for PlayStation®2) (sold separately) into MEMORY CARD slot 1.

STARTING UP

DUALSHOCK®2 ANALOG CONTROLLER CONFIGURATIONS

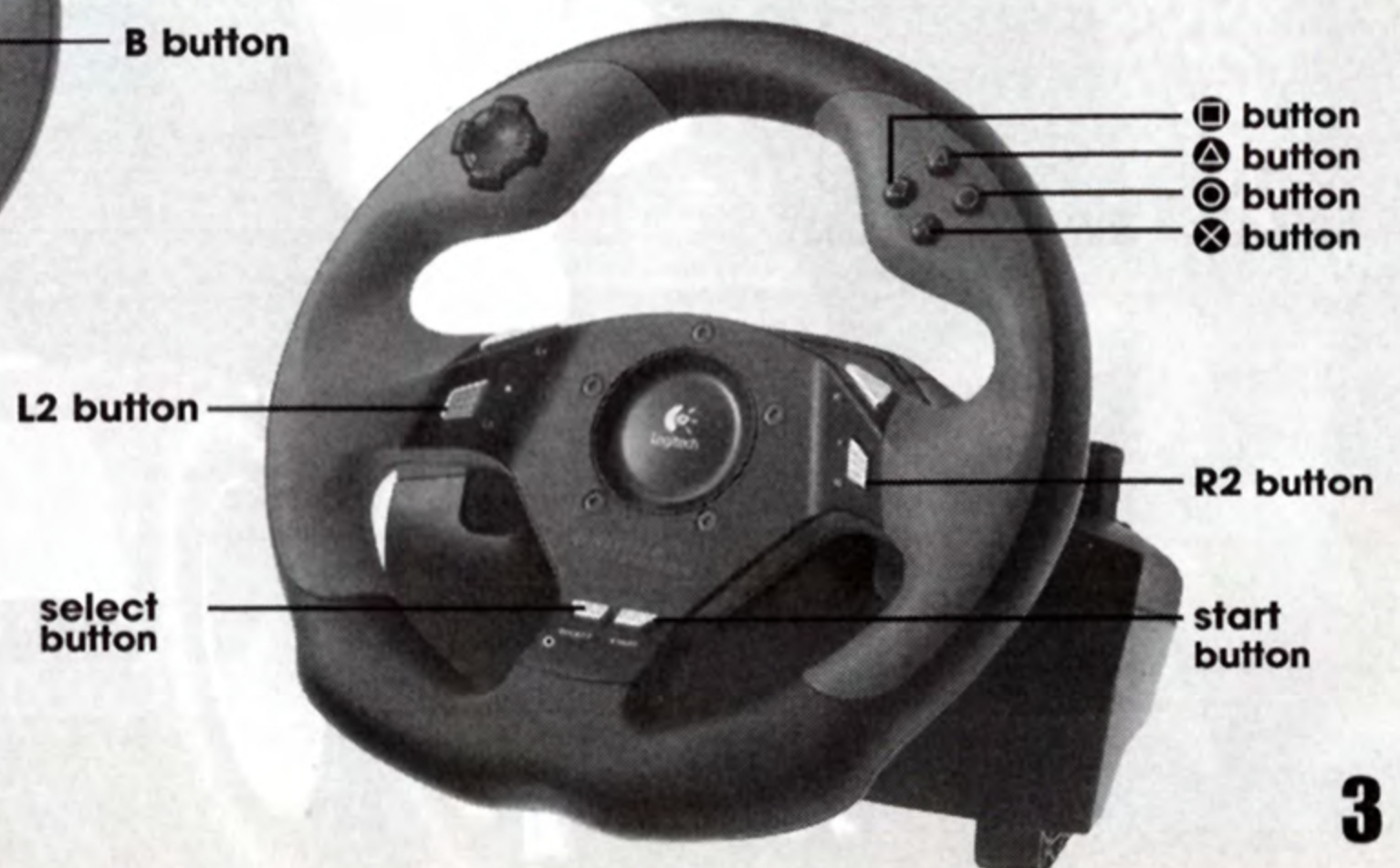


18 WHEELER™ AMERICAN PRO TRUCKER is a one or two player game that is played using the **DUALSHOCK®2** analog controller or the **Logitech GT Force™ USB Wheel** (for PlayStation®2) (sold separately) or **Logitech Driving Force™ USB Wheel** (for PlayStation®2) (sold separately). Connect the controller to be used to controller port 1 of the PlayStation®2 computer entertainment system.

LOGITECH GT FORCE™ USB WHEEL



LOGITECH DRIVING FORCE™ USB WHEEL



BASIC CONTROLS

	ON SELECTION SCREENS	DURING GAME PLAY
START button		Pause/ Continue Game
Directional buttons	Move Cursor	Steering Wheel
Left analog stick	Move Cursor	Steering Wheel
X button	Enter	Gear Shift
△ button	Cancel/Previous	Change View
○ button		Reverse
□ button		Horn
L2 button		Brake
R2 button		Accelerator

18 Wheeler supports 2 different types of force feedback wheel:

The GT Force™ wheel and the Logitech Driving Force™ wheel. Both wheels feature accelerator and brake pedals, which work as expected in the game. Both wheels give force feedback, vibrating when the player's truck is hit and giving feedback about the angle and condition of the road under the truck. Buttons on the front of the wheels are used as follows:

LOGITECH GT FORCE™ USB WHEEL (PS2)



Logitech Driving Force™ USB Wheel (PS2)



NOTE: These controls can be redefined.

If the floor peddles are plugged in, the paddles behind the wheel are as follows :

LEFT PADDLE: Reverse gear

RIGHT PADDLE: Hi / Lo gear change

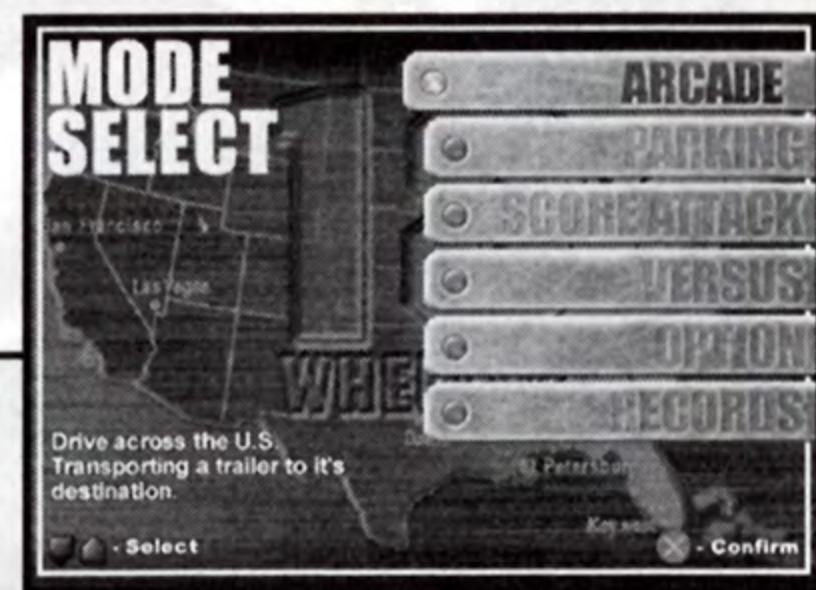
If the floor peddles are not plugged in, the paddles behind the wheel are as follows:

LEFT PADDLE: Brake

RIGHT PADDLE: Accelerator

STARTING A GAME

Once the title screen appears, press the **START button** to display the mode selection menu. Refer to the page numbers listed below for details on the modes available for gameplay.



GAME MODES

ARCADE

This mode is a straight port of the arcade version of 18 Wheeler. Transport cargo in an 18 wheel truck to various locations across the USA. (See p. 6)

PARKING

Park your truck in five places within the allotted time limit in each of the available stages of this mode. (See p. 9)

SCORE ATTACK

Race three laps to earn a score (combined value of reward money and leftover time) in this racing mode. (See p. 10)

VERSUS

In this two player mode, race three laps around the course to compete against your favorite rival. (See p. 11)

RECORDS

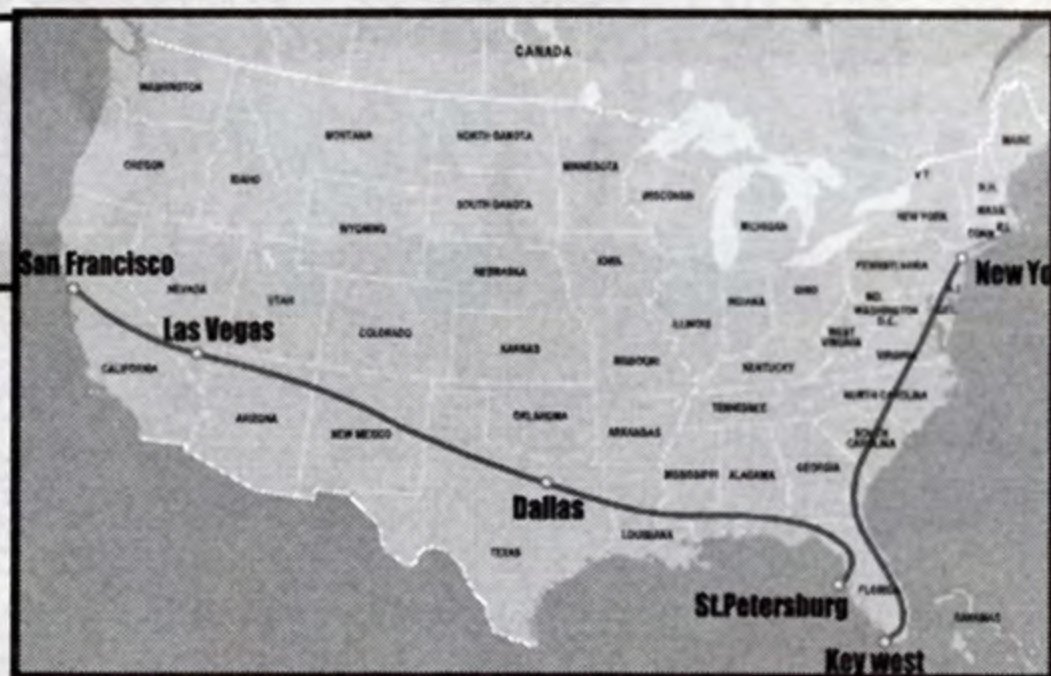
View the records you have accumulated. (See p.12)

OPTION

Modify the various game settings or perform save/load. (See p. 13)

ARCADE

In the arcade mode, your goal is to transport loads of cargo across the USA in stages from New York to San Francisco. Clear each stage by reaching the goal within the allotted time limit. Whenever you reach your goal before the rival trucker, you'll earn the chance to play a bonus game.



1 NEW YORK to KEY WEST

Stay on the highway or veer off on a seaside route in this first stage. Use the 'slip stream' (see p. 8) to overtake the rival truck and win!

2 ST. PETERSBURG to DALLAS

This stage features a fork that will take you along a dirt trail or through the center of town. Either way, watch out for that monstrous twister coming at ya!

3 DALLAS to LAS VEGAS

This mountain course has lots of uphill slopes that might result in time loss. But if you go too fast you just find yourself belly up at the bottom of the ravine!

4 LAS VEGAS to SAN FRANCISCO

Watch those curves and use that 'slip stream' to take control! The final goal is in sight!



① Destination

② Allotted Time Remaining

③ Rear View Mirror

④ Trailer and Reward Value

Decreases when the trailer is damaged.

⑤ Gears

HIGH, LOW and REVERSE.

⑥ Speed

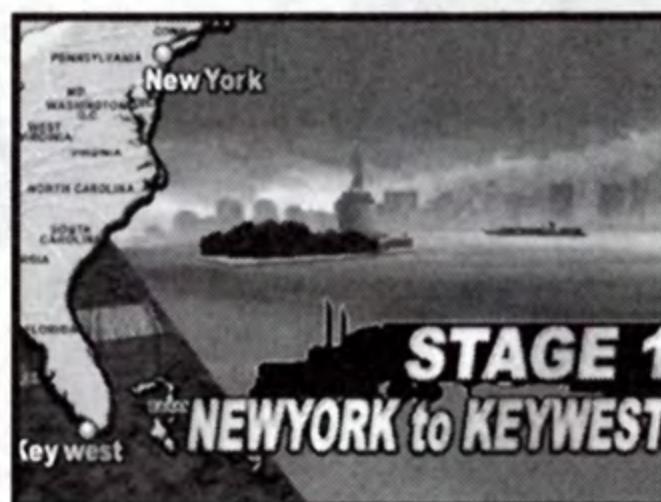
1 Truck Selection

Select a truck cab from the four types available. Each truck cab differs in terms of speed, torque and toughness. See p. 14-17 for details.



2 Rival Truck, Time Bonus Car and Stage Introduction

Now you will be shown your rival truck, the time bonus van and an introduction to the next stage. Every time you ram a time bonus van you'll earn an extra three seconds bonus to your allotted time limit.



3 Trailer Selection

From stage two on, you will be able to select the trailer you will transport. The longer or heavier the trailer and cargo are, the more difficult it will be to transport, but the higher the reward value will be.



4 Start

Once all the preparations are complete the race is on! Should you run out of time before reaching the goal, press the **START button** before the countdown reaches zero to try again.

5 Clearing the Stage

To clear the stage, reach the goal before the time limit runs out. You'll then receive reward money based on the combined value of the cargo and any remaining time.

If you can clear all the stages and set a new record, you can enter a three character name. Press **←** or **→** on the **left analog stick/directional buttons** to select a number or letter and press the **X button** to enter.



TIP!!

ADVICE

Slip Stream

If you manage to position your truck directly behind another one, you can achieve the 'slip stream' speed boost effect that occurs as a result of decreased wind resistance. Any vehicles that are approximately the same size as your own will create this effect.

Forks & Shortcuts

Within each stage there are forks in the road, so keep an eye on the rival trucker and make your decisions about which way to go accordingly. In some places there are shortcuts off-road, so stay alert and investigate all possible options.

Bonus Games

If you manage to make it to the goal ahead of the rival trucker, you'll earn the chance to participate in a parking challenge bonus game. If you can park your truck in the specified space within the allotted time, you'll win bonus parts for your truck. For details on the parking challenge, see p. 9



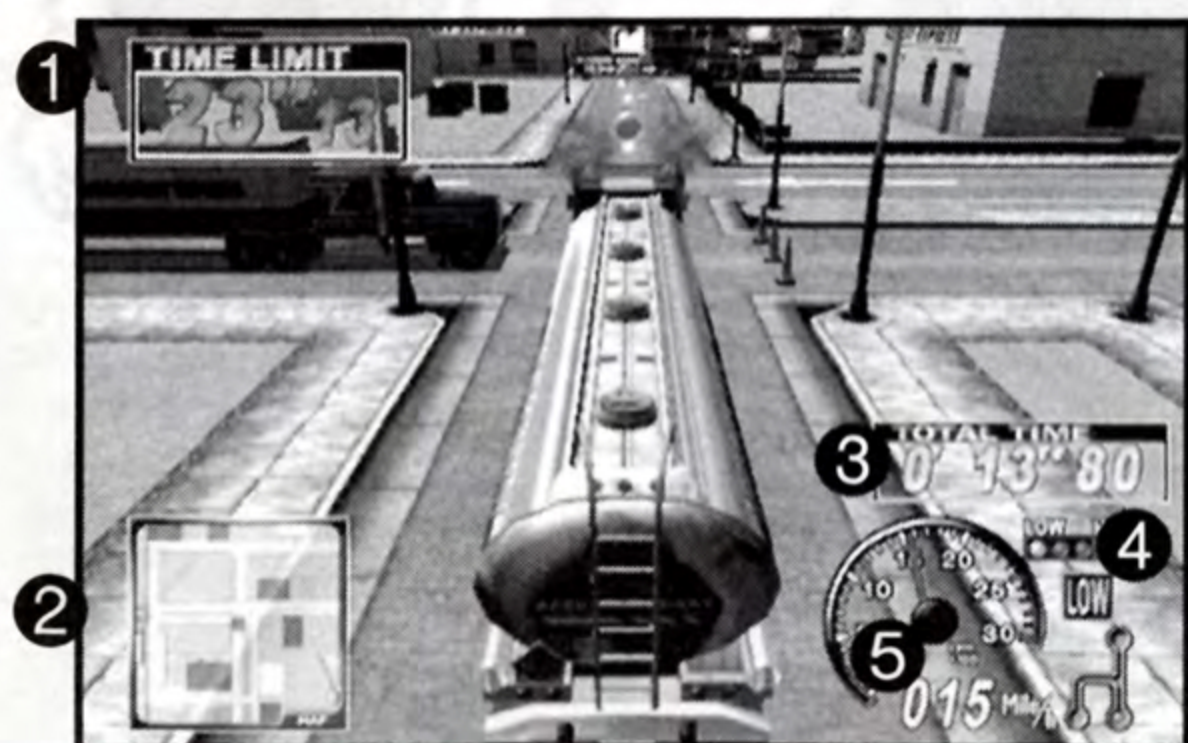
PAUSING THE GAME

While playing press the **START button** to pause the game and display the pause menu. From this menu you can select either **RESUME** to keep playing or **QUIT** to end the game.

PARKING

In this mode, park your truck in five separate areas within the allotted time limit to clear each stage. Clear all four of the available stages to uncover hidden bonus stages.

To park, simply position your truck within the green-rimmed walls of the parking space and press the brake. With every pole, drum, can, wall, etc., you hit, you'll incur a penalty and lose time, so you gotta be careful!



- ❶ **Allotted Time Remaining**
- ❷ **Radar Map** You = Red Block, Parking Area = Green Block, **button** = ON/OFF
- ❸ **Total Time**
- ❹ **Gears** HIGH, LOW and REVERSE
- ❺ **Speed**

- ➔ **1 Truck Selection**
- 2 Stage Selection**
- 3 Start**
- 4 Parking**
- 5 Clearing and Name Entry**

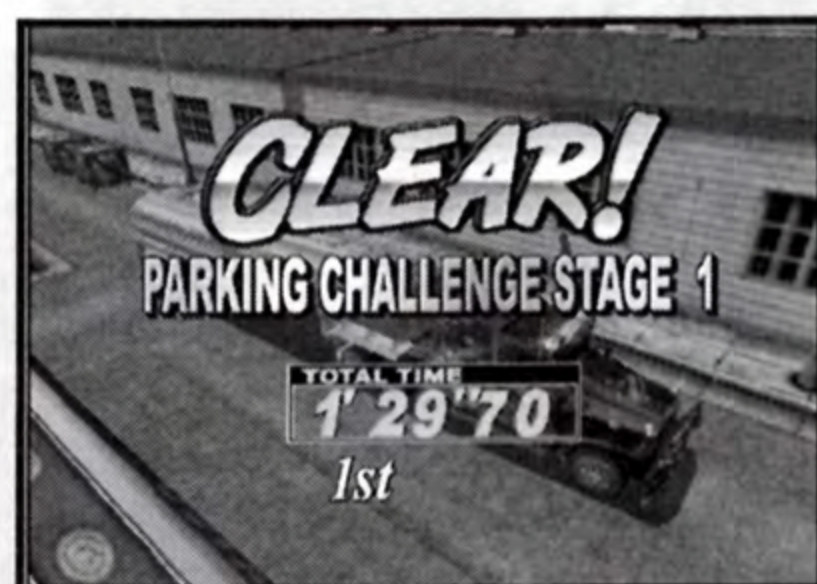
Aim for the green-rimmed walls and park that truck. If you overshoot and find your nose hanging outside of the spot, shift into reverse and back her up!



If you are able to park your truck in all five areas within the allotted time limit, you'll clear that stage. If you manage to set a new record, you can enter a three character name.

Press **←** or **→** **left analog**

stick/directional buttons to select a number or letter and press the **X button** to enter.



SCORE ATTACK

In this racing mode, select one of four courses and complete three laps to earn a score (combined total of the cargo reward value and bonus cash based on any time remaining).

Hitting bonus vans will increase your overall score. If you earn a high score, you can enter a three character name.

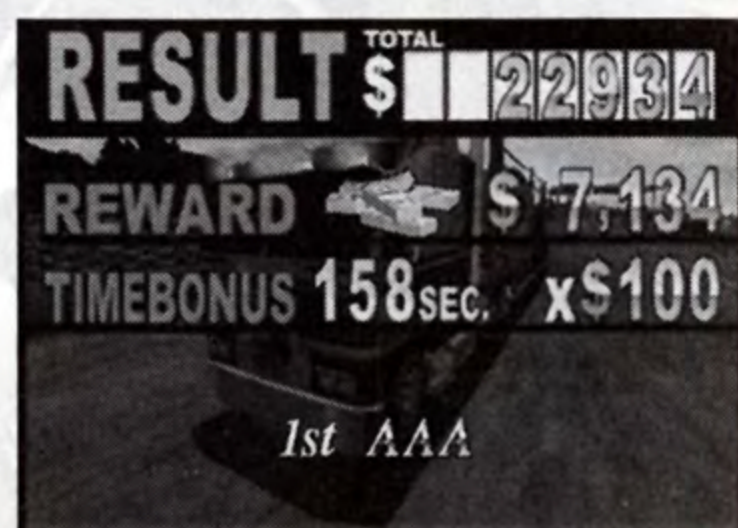


- ① **Allotted Time Remaining**
- ② **Radar Map** Shows you and your rivals' positions relative to the start and goal lines.
- ③ **Rear View Mirror** Does not appear when in third person view.
- ④ **Reward Value** Decreases when you hit other cars or exceed the time limit.
- ⑤ **Gears** HIGH, LOW and REVERSE
- ⑥ **Speed**

- 1 **Truck Selection**
- 2 **Trailer Selection**
- 3 **Stage Selection**
- 4 **Start**
- 5 **Arrival**
- 6 **Results Screen**

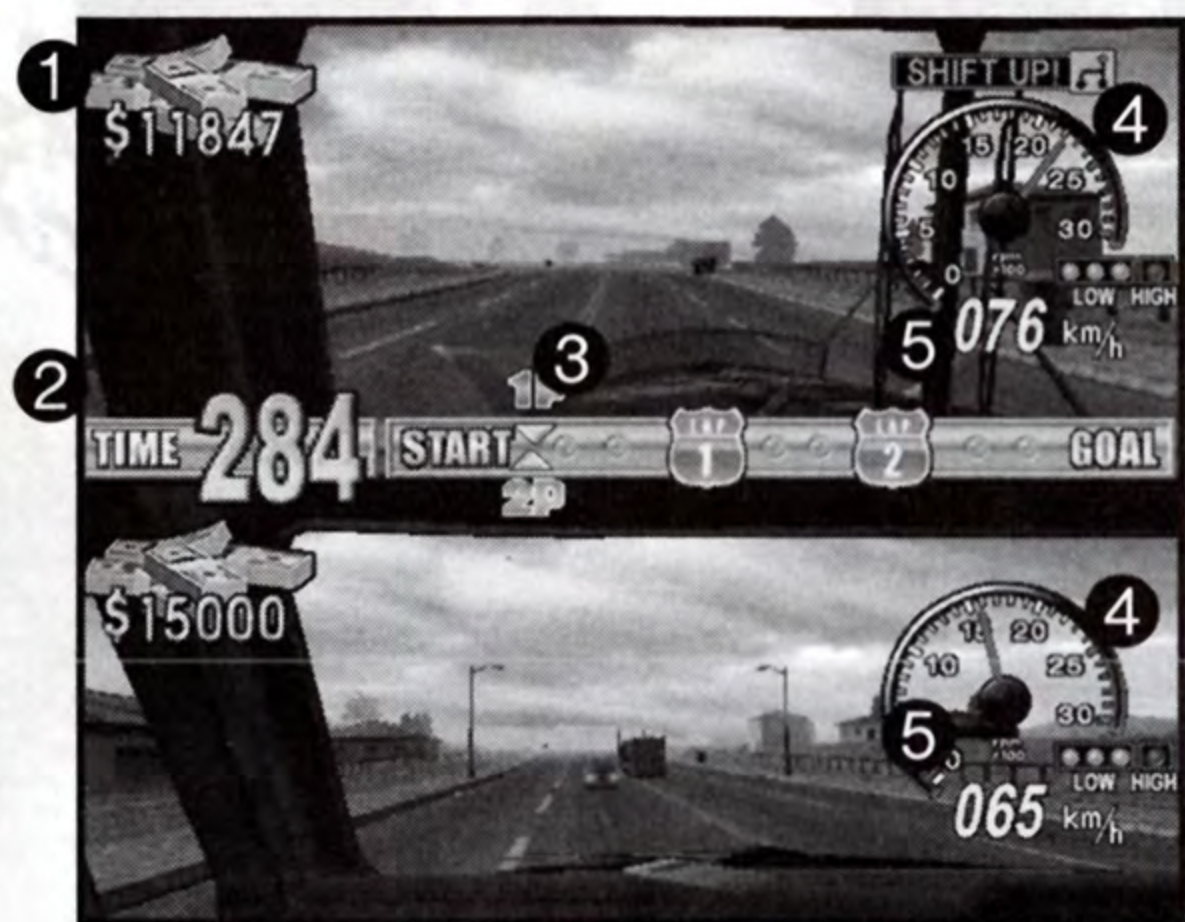
If you manage to complete all three laps within the allotted time, "ARRIVAL" will appear on the screen and the race will end.

The trailer cargo reward value and bonus cash based on the amount of time remaining will be displayed along with your overall score. For details about saving your score, refer to SAVING under OPTION on p. 13.



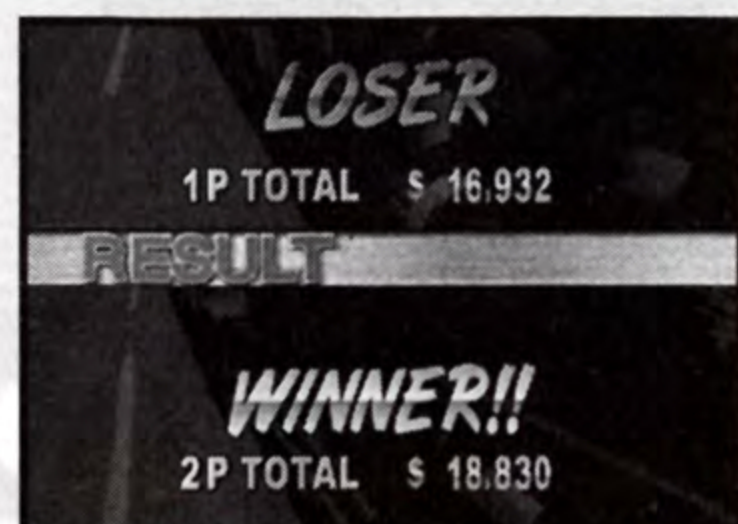
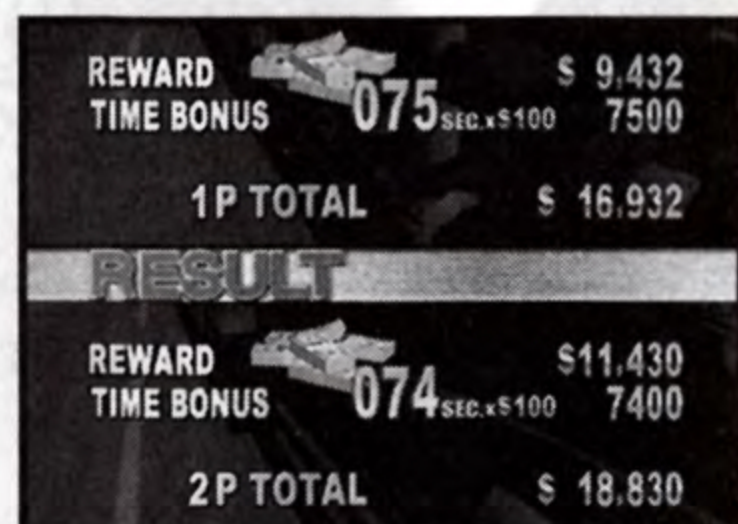
VERSUS

Select one of four courses and race three laps to see who can earn a higher score in this 2 player race mode. The top half of the split screen is Player 1's view and the bottom Player 2's. Bonus points are awarded for finishing the lap first. The highest score at the end of the race wins. The camera view cannot be changed.



- ① **Reward Value** Decreases when you hit other cars or exceed the time limit.
- ② **Allotted Time Remaining**
- ③ **Radar Map** Shows you and the rival's position relative to the start and goal lines.
- ④ **Gears** HIGH, LOW and REVERSE
- ⑤ **Speed**

- ① **Truck Selection**
Select a truck cab and cargo.
- ② **Stage Selection**
- ③ **Start**
- ④ **Results**
Once the three laps are complete, the overall score (combined total of the cargo reward value and bonus cash based on any time remaining) is displayed. The player with the higher score wins. If the time limit runs out before completing the laps, the player's score will decrease for each second of time exceeded.



RECORDS

Here you can view the high scores of each mode. Press **←** or **→** on the **left analog stick/directional buttons** to select a game mode and **↑** or **↓** to toggle between the difficulty levels or stages.

Once you turn the PlayStation®2 OFF, these records will be deleted, so if you wish to save these records, be sure to go to Option and save the data to a game file.



TIP!!

SAVING GAME DATA

Save the current data to a game file whenever you wish to save game settings, modifications or scores earned. The data will automatically be saved in a game file to the memory card (8MB) (for PlayStation®2) (sold separately).

OPTION

In Option, you can change the various game settings or save/load the game data. Select and enter "EXIT" to return to the mode selection screen.



Difficulty

This sets the difficulty level for the arcade mode. The available settings in the order they appear are as follows: VERY EASY>EASY>NORMAL>HARD>VERY HARD.

Vibration

Set to ON to enable the vibration effect on your DUALSHOCK®2 analog controller.

Audio

Toggle the sound output setting between MONO or STEREO.

Save

Select to save the game file to the inserted memory card.

Load

Select to load a game file from the inserted memory card.

Exit

Select to exit the Option mode and return to the mode selection menu.

TRUCKS



ASPHALT COWBOY

This truck is a good all-around rig for just about any haul. Standard is her middle name. Particularly recommended for greenhorns.

SPEED = ◆◆◆

TORQUE = ◆◆◆◆

TOUGHNESS = ◆◆◆

Based on a possible of five ◆ marks.

CB HANDLE

TEXAS HAWK

Hobby: Collecting sunglasses.

Philosophy: "Y'all know, my granddaddy was a famous cowboy and I got that same cowboy blood. Only difference is my horse is an 18 wheel rig!"

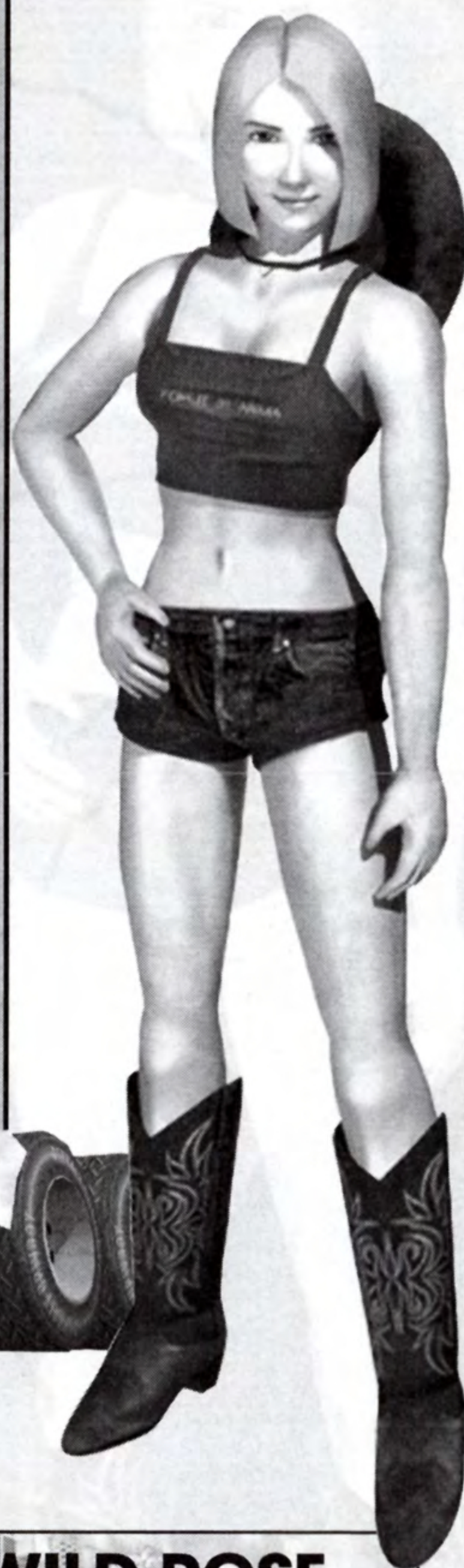
HIGHWAY CAT

With the highest top speed, this truck is well-suited for racing down the highway. However, a lack of torque makes uphill hauling difficult.

SPEED = ◆◆◆◆

TORQUE = ◆◆

TOUGHNESS = ◆◆◆



CB HANDLE WILD ROSE

Hobby: Maintaining my pretty lil truck.

Philosophy: " I love this job! Ya meet so many people, so many chances for love..."

Speaking of which, I am currently available! Anyone out there interested in cuddling a rose with a few thorns?"

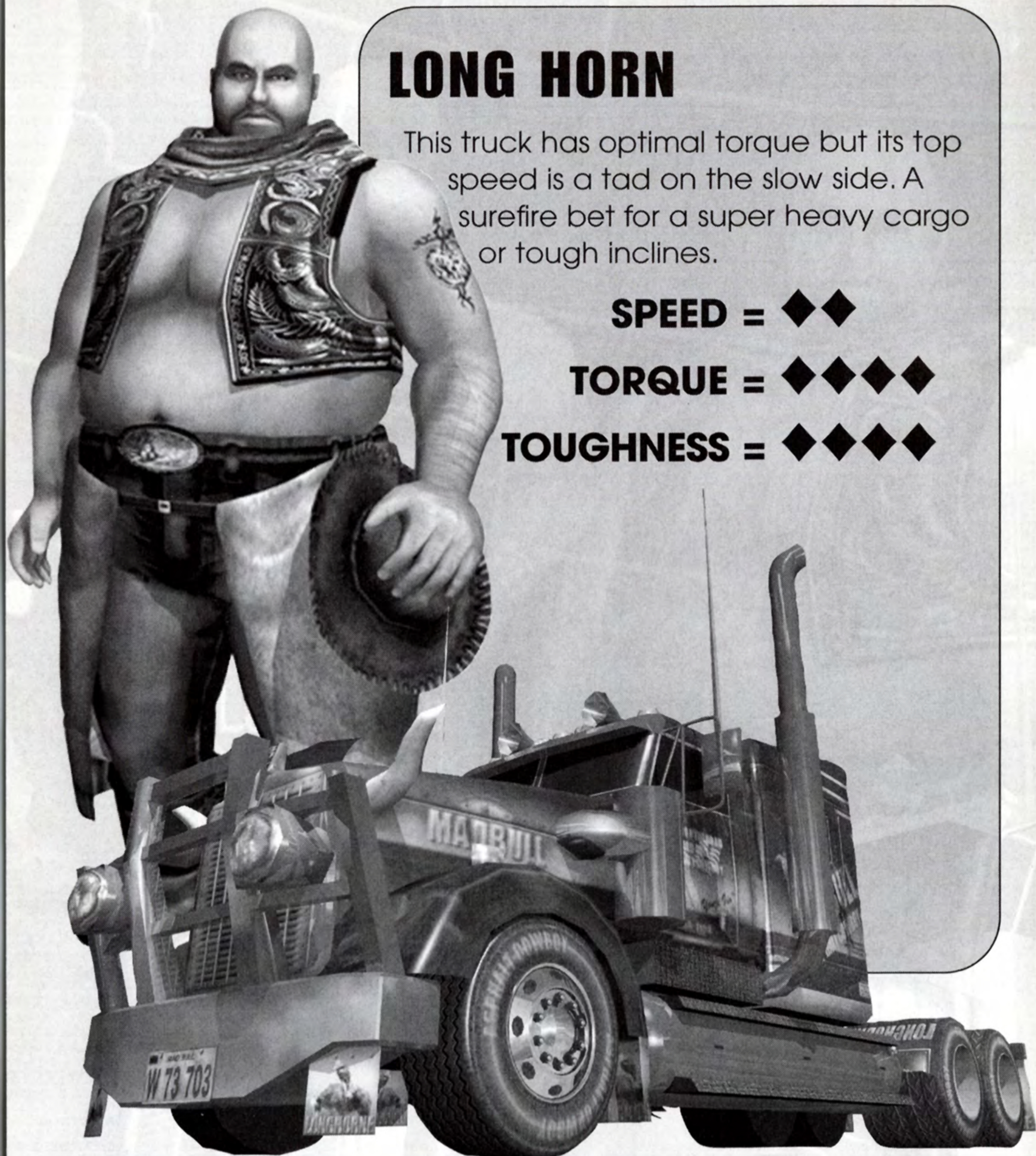
LONG HORN

This truck has optimal torque but its top speed is a tad on the slow side. A surefire bet for a super heavy cargo or tough inclines.

SPEED = ♦♦

TORQUE = ♦♦♦♦

TOUGHNESS = ♦♦♦♦



CB HANDLE LONG HORN

Hobby: Cooking up multiple slabs of my fingerlickin' ribs in a special hot sauce.

Philosophy: "Being a real man, I do my best to play by the rules and stay on course. 'Cept for them times when a man ain't got no other choice but to forge his own path. Know what I mean?"

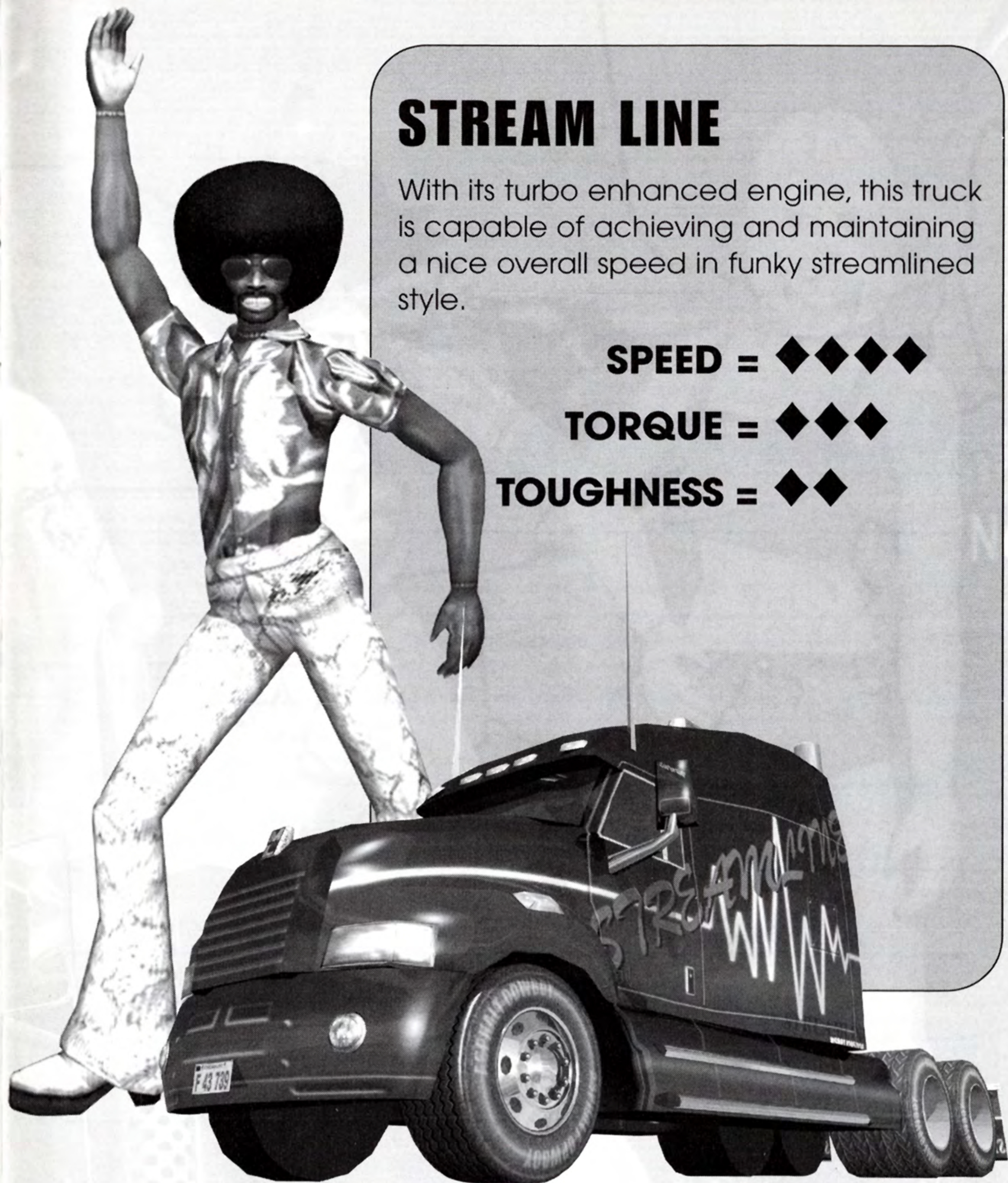
STREAM LINE

With its turbo enhanced engine, this truck is capable of achieving and maintaining a nice overall speed in funky streamlined style.

SPEED = ◆◆◆◆

TORQUE = ◆◆◆

TOUGHNESS = ◆◆

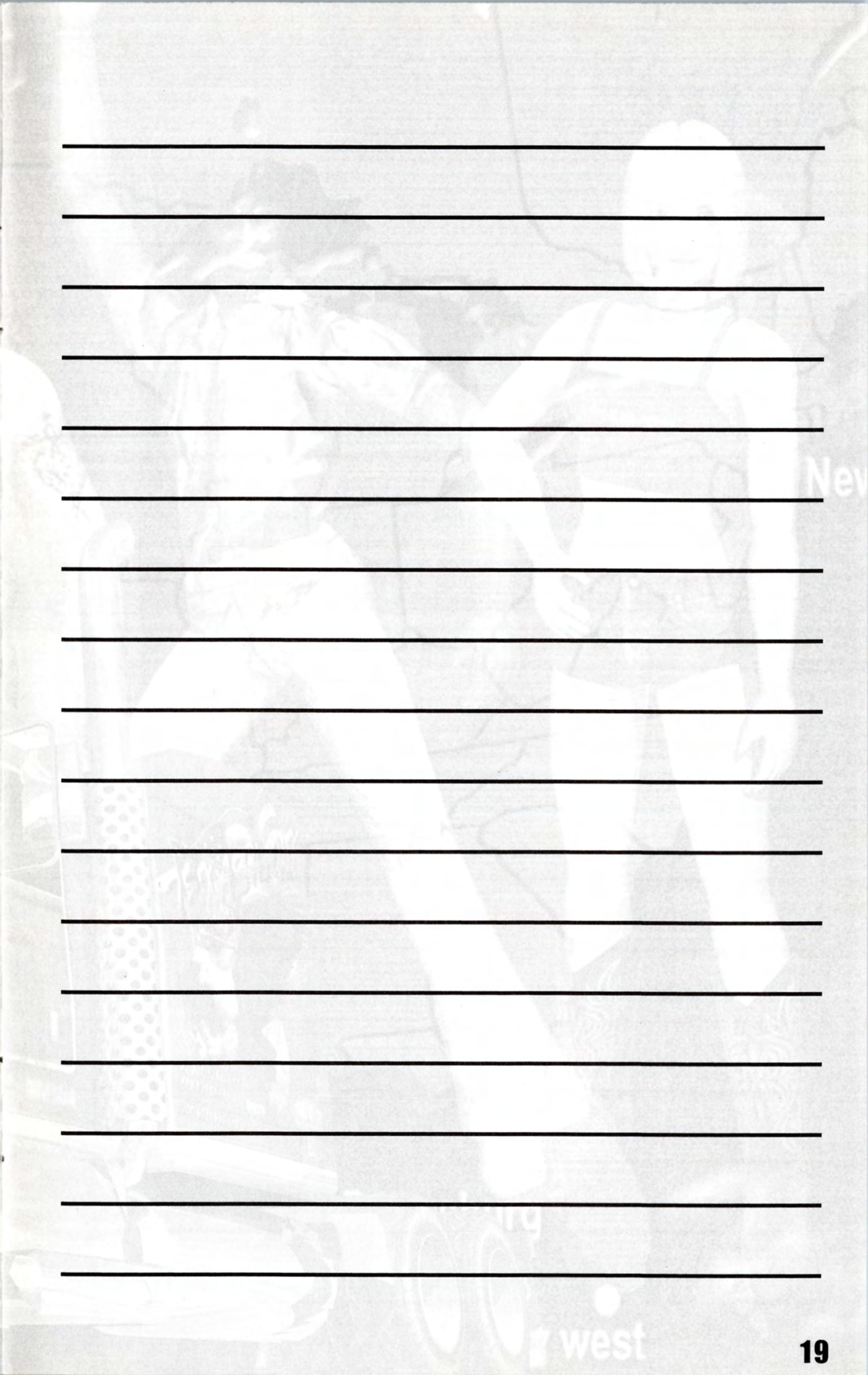


CB HANDLE - **MOONLIGHT**

Hobby: Maintaining my beautiful afro.

Philosophy: "Come dance with me on the highways, baby! I am the king in both my occupation and the labor of love. Can't no one beat my dynamite moves!"

Note: Dancing ability or lack thereof has no effect on driving ability.



New

west

ACCLAIM® LIMITED WARRANTY

ACCLAIM warrants to the original purchaser only of this ACCLAIM software product that the medium on which this software program is recorded is free from defects in materials and workmanship for a period of ninety (90) days from the date of purchase. This ACCLAIM software program is sold "as is," without express or implied warranty of any kind, and ACCLAIM is not liable for any losses or damages of any kind resulting from use of this program. ACCLAIM agrees for a period of ninety (90) days to either repair or replace, at its option, free of charge, any ACCLAIM software product, postage paid, with proof of date of purchase, at its Factory Service Center. Replacement of the software product, free of charge to the original purchaser (except for the cost of returning the software product) is the full extent of our liability.

This warranty is not applicable to normal wear and tear. This warranty shall not be applicable and shall be void if the defect in the ACCLAIM software product has arisen through abuse, unreasonable use, mistreatment or neglect. THIS WARRANTY IS IN LIEU OF ALL OTHER WARRANTIES AND NO OTHER REPRESENTATIONS OR CLAIMS OF ANY NATURE SHALL BE BINDING ON OR OBLIGATE ACCLAIM. ANY IMPLIED WARRANTIES APPLICABLE TO THIS SOFTWARE PRODUCT, INCLUDING WARRANTIES OF MERCHANTABILITY AND FITNESS FOR A PARTICULAR PURPOSE, ARE LIMITED TO THE NINETY (90) DAY PERIOD DESCRIBED ABOVE. IN NO EVENT WILL ACCLAIM BE LIABLE FOR ANY SPECIAL, INCIDENTAL, OR CONSEQUENTIAL DAMAGES RESULTING FROM POSSESSION, USE OR MALFUNCTION OF THIS ACCLAIM SOFTWARE PRODUCT.

Some states do not allow limitations as to how long an implied warranty lasts and/or exclusions or limitations of incidental or consequential damages so the above limitations and/or exclusions of liability may not apply to you. This warranty gives you specific rights, and you may also have other rights which vary from state to state.

This warranty shall not be applicable to the extent that any provision of this warranty is prohibited by any federal, state or municipal law which cannot be pre-empted.

Repairs/Service after Expiration of Warranty—If your software product requires repair after expiration of the 90-day Limited Warranty Period, you may contact the Consumer Service Department at the number listed below. You will be advised of the estimated cost of repair and the shipping instructions.

Acclaim Hotline/Consumer Service Department (516) 759-7800

18 WHEELER™ created and produced by **SEGA**. SEGA and 18 Wheeler: American Pro Trucker are registered trademarks of SEGA Corporation. Original Game © SEGA-AM2 Co LTD./SEGA CORPORATION, 2001. All Rights Reserved. Burnout™ © 1998-2001 Criterion Software Limited. All Rights Reserved. Burnout is a Trademark of Criterion Software Limited. Acclaim® & © 2001 Acclaim Entertainment, Inc. All Rights Reserved. Developed by Criterion Games. All Rights Reserved. Marketed by Acclaim. Distributed by Acclaim Distribution, Inc., One Acclaim Plaza Glen Cove, NY 11542-2777.

www.acclaim.com

LOOK FOR

BURNOUT™



Acclaim® & © 2001 Acclaim Entertainment, Inc. All Rights Reserved. Marketed by Acclaim.
Distributed by Acclaim Distribution, Inc., One Acclaim Plaza, Glen Cove, NY 11542-2777.

18 WHEELER™ created and produced by SEGA. SEGA and 18 Wheeler:
American Pro Trucker are registered trademarks of SEGA Corporation.
Original Game © SEGA-AM2 Co LTD./SEGA CORPORATION, 2001. All Rights Reserved.

Licensed for play on the PlayStation 2 computer entertainment systems with the NTSC U/C designation only. "PlayStation" and the "PS" Family logo are registered trademarks of Sony Computer Entertainment Inc. The ratings icon is a trademark of the Interactive Digital Software Association. Manufactured and printed in the U.S.A. THIS SOFTWARE IS COMPATIBLE WITH PLAYSTATION 2 CONSOLES WITH THE NTSC U/C DESIGNATION. U.S. AND FOREIGN PATENTS PENDING.

The Acclaim logo, featuring the word 'Acclaim' in a bold, italicized, sans-serif font. The letter 'A' is stylized with a diagonal line through it. The logo is set against a background of a rainbow-colored gradient.