



Public Safety Is  
Now In Your Hands

# VIRTUA COP 3

TM



SEGA AMUSEMENTS EUROPE Ltd.  
Suite 3a, Oaks House, 12 - 22 West Street, Epsom, Surrey, United Kingdom KT18 7RG  
Tel: +44 (0) 1372 731820 Fax: +44 (0) 1372 731849  
[www.sega-amusements.co.uk](http://www.sega-amusements.co.uk)



Original Game © SEGA © SEGA-AM2/SEGA, 2003



# THE LATEST EVOLUTION OF THIS POPULAR GUN GAME HAS BEEN ACHIEVED BY THE DEVELOPMENT OF THE REVOLUTIONARY E.S. MODE !!

Vicious psychopathic criminals roam the streets of Virtua City. It's your job to stop them !!

## E.S. MODE (Exceeding Sense Mode)

Fight fierce gun battles in a world of super-sense slow motion!

When the E.S. Mode is engaged, everything will occur in slow motion. Players will therefore be able to recognize the bullets fired by enemies and then will be able to precisely deal with the situations of the battle. Players should intercept the enemy's bullets indicated in RED, as they will damage you. Use the E.S. Mode wisely. When the E.S. Mode is engaged the value of the E.S. Gauge will decrease. Once the E.S. Gauge goes to zero you will no longer be able to use the E.S. Mode. Shoot down the enemies to build up the value of the E.S. Gauge.



Step on the pedal to engage E.S. MODE

## E.S. ATTACK (Exceeding Sense Attack)



You will need prompt judgment and precise shooting during this split second attack to succeed.

E.S. Attack is a progression of E.S. Mode. It will start automatically at a specific scene and requires you to attack the most effective target within a specific time. You must act accurately and swiftly to succeed. Players can continue to shoot until the gauge goes to zero.

## WEAPON CHANGE SYSTEM

Attack using the most suitable weapons depending on the battle conditions.

Players can switch the weapons by pressing the "Weapon Change Button". By pressing the button, players can switch to and from Special Weapon & Original Weapon. Special Weapons will be lost when players shoot civilians by mistake or when attacked by enemies. Also there is a limit of bullets with Special Weapons so use them wisely.



Press button to change weapon

### Janet (operator)

A new member since Virtua Cop 2. She is good at profiling (crime psychology analysis). It seems she sometimes cannot get along with Rage due to her obstinate personality. Currently she is in charge of supporting the front line.



### Smarty (Jimmy Cools)

Making a clear contrast to Rage, Smarty always has a calm mind and sharp brain. His shooting skill is the highest in the office. He also has been famous as a playboy since the previous title (VC2).



### Rage (Mike Hardy)

Rage has amazing physical strength and the wild sixth-sense. A hot-blooded man who acts first and thinks afterwards. This sometimes gets him into trouble at the office.



## Explanations of the screen

### Bullet Gauge

When the bullets are short, players must shoot out of the screen to reload.

### Weapons to use

By pressing the Weapon Change Button, players can change weapons.



### Lock-on Site

The lock on site automatically detects enemies with weapons.

### E.S. Gauge

When the E.S. Mode is engaged the E.S. Gauge shows how much energy has been consumed. Energy is recovered by shooting enemies.

### Life Points

The game is over when all the "lives" are lost.

## 3 MISSIONS TO CHOOSE FROM



### Simple Mission:

A medicine-manufacturing factory has been broken into at midnight by an armed and dangerous gang. The mission of Virtua cops is to bring the laboratory back under control and to capture the criminals. Using plastic explosives Virtua Cops will break into the inside of the building from the observation halls on the 72nd floor.



### Normal Mission:

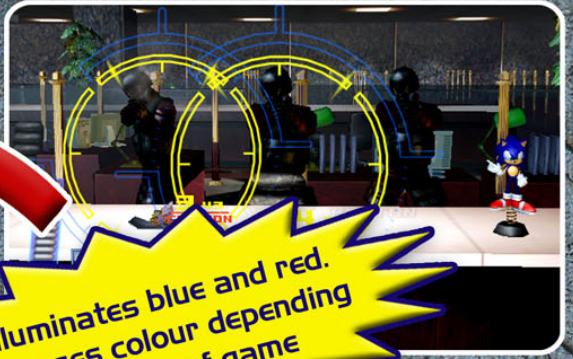
At midday, the surveillance camera spots something unusual in the VC BANK. A collaboration strategy with VCPD is scheduled. The mission of Virtua Cops is to capture the main criminal. Rush to the site! Detailed instruction will be sent by communication with Janet.



### Hard Mission:

A large Military Base is in trouble with communication. It is highly possible that a coup d'etat has occurred. Sneak into the base from the underground waterway and report the situation with utmost secrecy. Rage and Smarty will be accompanied by Janet to the site.





Illuminates blue and red.  
Changes colour depending  
on stage of game

**Naomi  
Universal  
Upright**

**Deluxe  
Cabinet**

Revolutionary  
new ES mode  
step pedal



DISTRIBUTED BY:

**SEGA**<sup>®</sup>

SEGA AMUSEMENTS EUROPE Ltd.  
[www.sega-amusements.co.uk](http://www.sega-amusements.co.uk)

Suite 3a, Oaks House, 12 - 22 West Street, Epsom, Surrey, United Kingdom KT18 7RG  
Tel: +44 (0) 1372 731820 Fax: +44 (0) 1372 731849



*Chihiro*

Original Game © SEGA © SEGA-AM2/SEGA, 2003