

MARSR

TM



 Dreamcast™

CAPCOM

© 1999 CAPCOM CO., LTD. ALL RIGHTS RESERVED. CAPCOM, MARSR, AND THE MARSR CHARACTER DESIGN ARE TRADEMARKS OF CAPCOM CO., LTD. IN JAPAN AND OTHER COUNTRIES. MARSR IS A TRADEMARK OF CAPCOM CO., LTD. IN JAPAN AND OTHER COUNTRIES. THE MARSR CHARACTER DESIGN IS A TRADEMARK OF CAPCOM CO., LTD. IN JAPAN AND OTHER COUNTRIES. THE MARSR CHARACTER DESIGN IS A TRADEMARK OF CAPCOM CO., LTD. IN JAPAN AND OTHER COUNTRIES.

EVERYONE
®
E
CONTENT RATED BY
ESRB

T-1221N

WARNINGS Read Before Using Your Sega Dreamcast™ Video Game System

CAUTION

Anyone who uses the Sega Dreamcast should read the operating manual for the software and console before operating them. A responsible adult should read these manuals together with any minors who will use the Sega Dreamcast before the minor uses it.

HEALTH AND EPILEPSY WARNING

Some small number of people are susceptible to epileptic seizures or loss of consciousness when exposed to certain flashing lights or light patterns that they encounter in everyday life, such as those in certain television images or video games. These seizures or loss of consciousness may occur even if the person has never had an epileptic seizure.

If you or anyone in your family has ever had symptoms related to epilepsy when exposed to flashing lights, consult your doctor prior to using the Sega Dreamcast.

In all cases, parents should monitor the use of video games by their children. If any player experiences dizziness, blurred vision, eye or muscle twitches, loss of consciousness, disorientation, any involuntary movement or convulsion, **IMMEDIATELY DISCONTINUE USE AND CONSULT YOUR DOCTOR BEFORE RESUMING PLAY.**

To reduce the possibility of such symptoms, the operator must follow these safety precautions at all times when using the Sega Dreamcast.

- Sit a minimum of 6.5 feet away from the television screen. This should be as far as the length of the controller cable.
- Do not play if you are tired or have not had much sleep.
- Make sure that the room in which you are playing has all the lights on and is well lit.
- Stop playing video games for at least ten to twenty minutes per hour. This will rest your eyes, neck, arms and fingers so that you can continue comfortably playing the game in the future.

OPERATING PRECAUTIONS

To prevent personal injury, property damage or malfunction:

- Before removing the disc, be sure it has stopped spinning.
- The Sega Dreamcast GD-ROM disc is intended for use exclusively on the Sega Dreamcast video game system. Do not use this disc in anything other than a Sega Dreamcast console, especially not in a CD player.
- Do not allow fingerprints or dirt on either side of the disc.
- Avoid bending the disc. Do not touch, smudge or scratch its surface.
- Do not modify or enlarge the center hole of the disc or use a disc that is cracked, modified or repaired with adhesive tape.
- Do not write on or apply anything to either side of the disc.
- Store the disc in its original case and do not expose it to high temperature and humidity.
- Do not leave the disc in direct sunlight or near a radiator or other source of heat.
- Use lens cleaner and a soft dry cloth to clean the disc, wiping gently from the center to the edge. Never use chemicals such as benzene and paint thinner to clean the disc.

PROJECTION TELEVISION WARNING

Still pictures or images may cause permanent picture tube damage or mark the phosphor of the CRT. Avoid repeated or extended use of video games on large-screen projection televisions.

SEGA DREAMCAST VIDEO GAME USE

This GD-ROM can only be used with the Sega Dreamcast video game system. Do not attempt to play this GD-ROM on any other CD player; doing so may damage the headphones and/or speakers. This game is licensed for home play on the Sega Dreamcast video game system only. Unauthorized copying, reproduction, rental, or public performance of this game is a violation of applicable laws. The characters and events portrayed in this game are purely fictional. Any similarity to other persons, living or dead, is purely coincidental.

CAPCOM®

A Special Message from CAPCOM ENTERTAINMENT

Thank you for selecting MARS MATRIX for your Sega Dreamcast. We at CAPCOM ENTERTAINMENT are proud to bring you this new addition to your video game library.

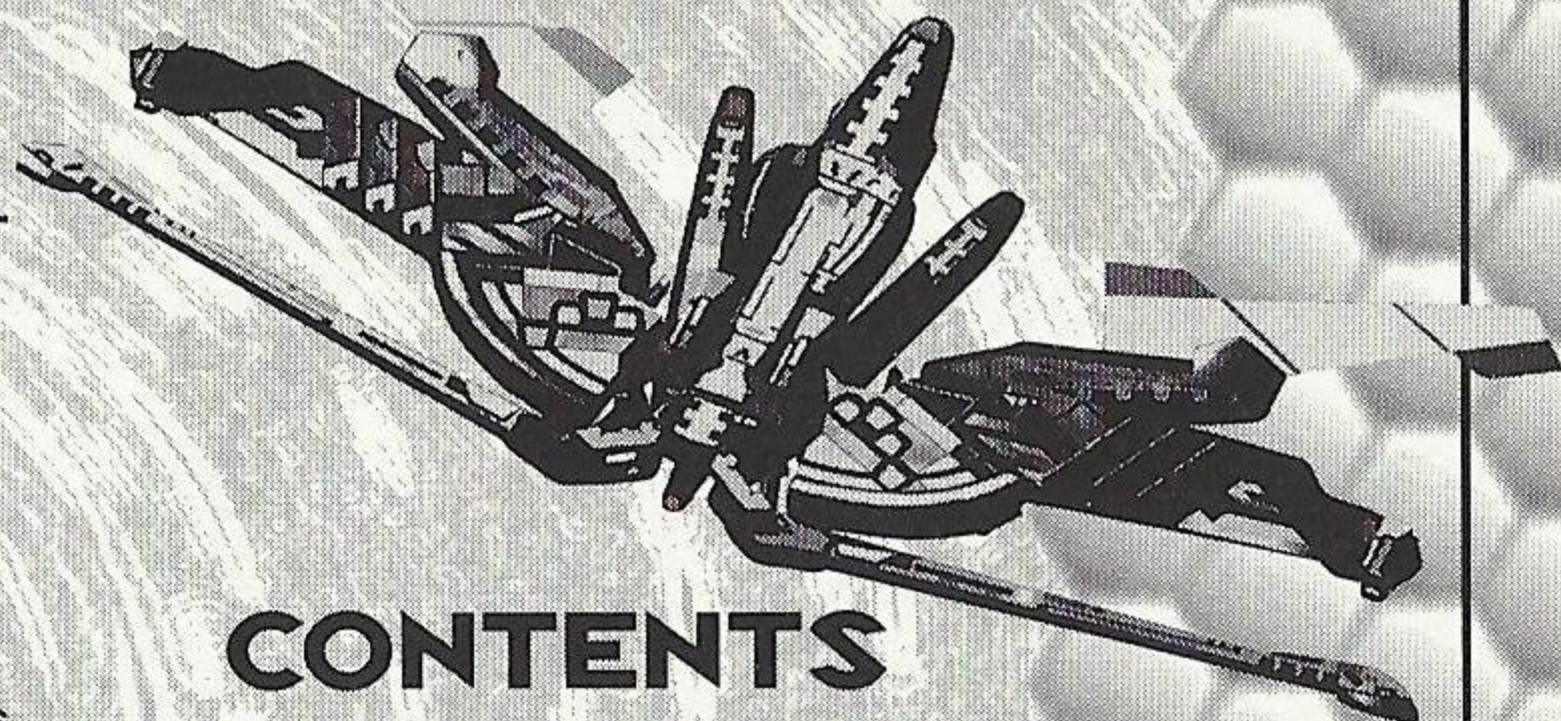
CAPCOM ENTERTAINMENT, INC.

475 Oakmead Parkway, Sunnyvale, CA 94086

© CAPCOM CO., LTD. 2001 ALL RIGHTS RESERVED.

© CAPCOM U.S.A., INC. 2001 ALL RIGHTS RESERVED.

CAPCOM and the CAPCOM LOGO are registered trademarks of CAPCOM CO., LTD. MARS MATRIX and CAPCOM EDGE are trademarks of CAPCOM CO., LTD.



CONTENTS

THE RED PLANET REBELS!	3
MOSQUITO 01	4
MOSQUITO 02	5
SEGA DREAMCAST™	6
CONTROLS	8
STARTING A GAME	11
GAME SCREEN	12
COMBAT RULES	13
ATTACK MODES	14
GAME MODES	16
ARCADE MODE	16
ELITE MODE	16
SCORE CHALLENGE MODE	16
RANKING	17
STRATEGY	17
OPTIONS MODE	18
SPECIAL OPTIONS MODE	19
SHOP MODE	20
GALLERY	20
PAUSE MENU	21
SAVING/LOADING	22
COMBAT LOG	23
CAPCOM EDGE	24

CAPCOM EDGE HINT LINE

Hints are available:

1-900-976-EDGE (1-900-976-3343)

\$.99 per minute for 24-hr. pre-recorded information.

\$1.35 per minute for live Game Counselor assistance.

From Canada: 1-900-677-2272 (\$1.35 per minute).

Must be 18 years or older, or have parental permission.

Game Counselors available Monday - Friday 8:30 a.m. - 5:00 p.m.

Pacific Time. This hint line supports games produced by CAPCOM ENTERTAINMENT, INC. only. No hints will be given on our Consumer Service line. You must have a touch-tone phone to use this service.

CAPCOM ON-LINE

<http://www.capcom.com>

Visit our website to see all the great new CAPCOM products or to check out featured games on-line! You can also e-mail us at megamail@capcom.com for technical help or to find out what's new at CAPCOM!

REGISTER ONLINE AT WWW.CAPCOM.COM



2



THE RED PLANET REBELS!

Half a century has passed since humans successfully carried out their project to migrate to Mars.

During the colonization, several self-governing areas formed on the red planet. But independent control was never granted. Instead, the MDA (Mars Development Agency) was created by the Earth Federation.

Outwardly, Mars seemed to be self-governing. In reality, it was a shackled colony completely controlled by Earth.

DECEMBER 8TH, 2309 ...

A sudden crackle of static bursts into Earth's atmosphere. An unexpected transmission from Mars breaks into all broadcasts – "We declare our independence. We are no longer Earth's subjects" – and all contact from Mars is lost.

The red planet maintains an eerie silence. All of Earth's attempts to contact Mars fail.

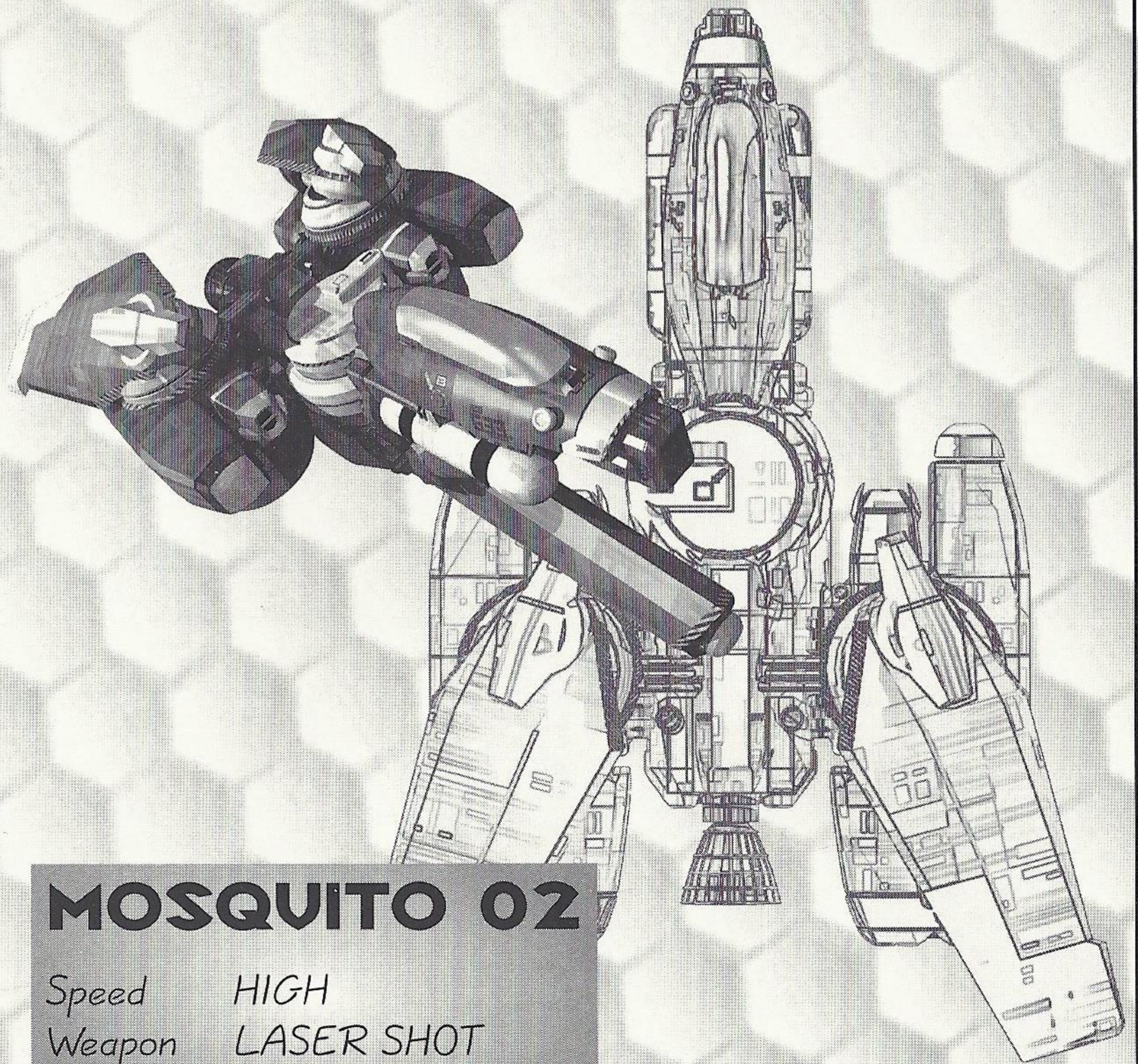
Realizing the situation is extreme, the Earth Federation Army readies its toughest military contingent to deploy from the moon and converge on Mars. This armed spaceforce is made up of hundreds of ships – and a few experimental fighters ...

Space explodes into a battlefield. The Mars War of Independence begins!



MOSQUITO 01

Speed NORMAL
Weapon WIDEBLASTER

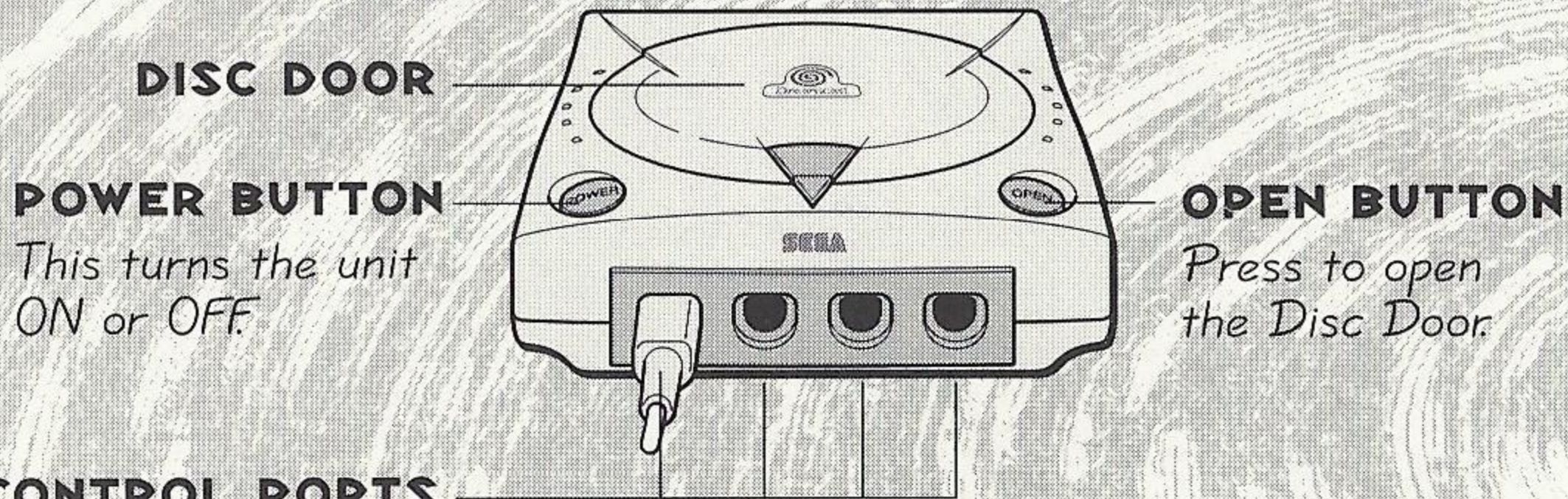


MOSQUITO 02

Speed *HIGH*
Weapon *LASER SHOT*

SEGA DREAMCAST™

SEGA DREAMCAST HARDWARE UNIT



DISC DOOR

POWER BUTTON

This turns the unit
ON or OFF.

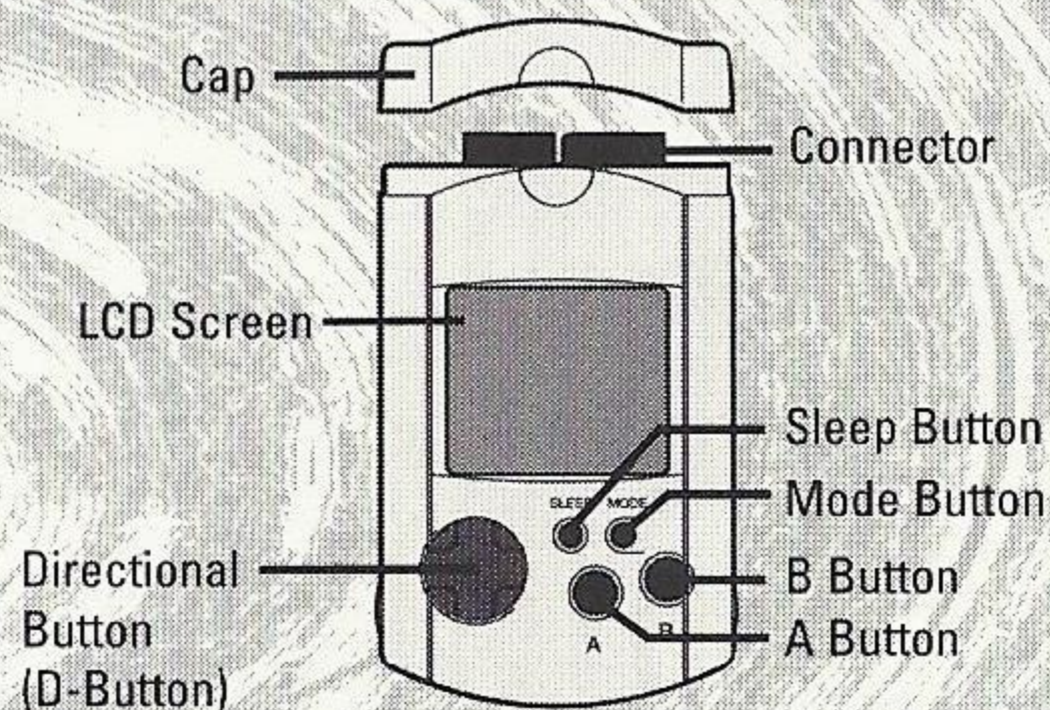
OPEN BUTTON

Press to open
the Disc Door.

CONTROL PORTS

Use these ports to connect the Sega Dreamcast™ Controller or other peripheral equipment. From left to right are Control Port A, Control Port B, Control Port C, and Control Port D. For MARS MATRIX, use Control Ports A and B to connect controllers for players 1 and 2 respectively. MARS MATRIX is a 1-to-2 player game. Before turning the Sega Dreamcast power ON, connect the Sega Dreamcast controller(s) or other peripheral equipment into the control ports. Purchase an additional controller (sold separately) to play with two people.

SEGA DREAMCAST VISUAL MEMORY UNIT (VMU)



To automatically save score rankings, option settings and other game information, insert a Visual Memory Unit (VMU) into Expansion Slot 1 of the controller in Control Port A **BEFORE** turning on the Sega Dreamcast.

Note: While saving a game file, never turn OFF the Sega Dreamcast power, remove the memory card or disconnect the controller.

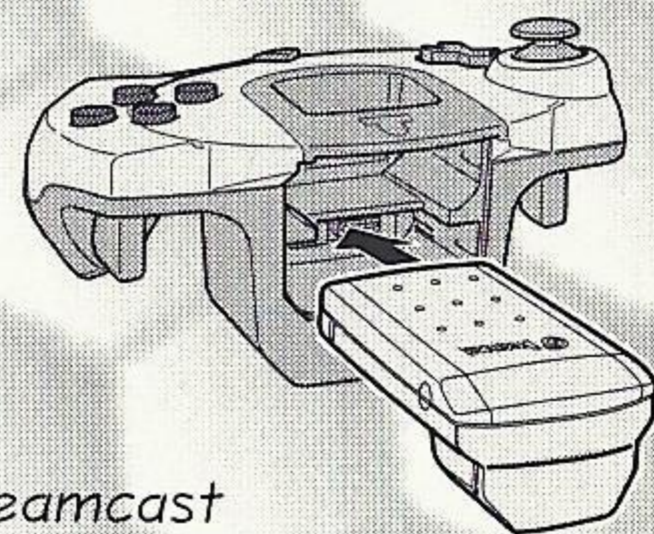
CONTROLS

- The button assignments on pages 9-10 are the defaults. You can change them in Options Mode. (See page 18.)
- *MARS MATRIX* is a 1-to-2 player game. Connect controllers or other peripheral equipment before turning on the Sega Dreamcast.
- Never touch the Analog Thumb Pad or Triggers L/R while turning the Sega Dreamcast power ON. Doing so may disrupt the controller initialization procedure and result in malfunction. If the Analog Thumb Pad or Triggers L/R are accidentally moved while turning the Sega Dreamcast power ON, immediately turn the power OFF and then ON again, making sure not to touch the controller.
- To return to the Title screen at any point during game play, simultaneously press and hold the A, B, X, Y and Start buttons. This will cause the Sega Dreamcast to soft-reset the software.

SEGA DREAMCAST JUMP PACK™

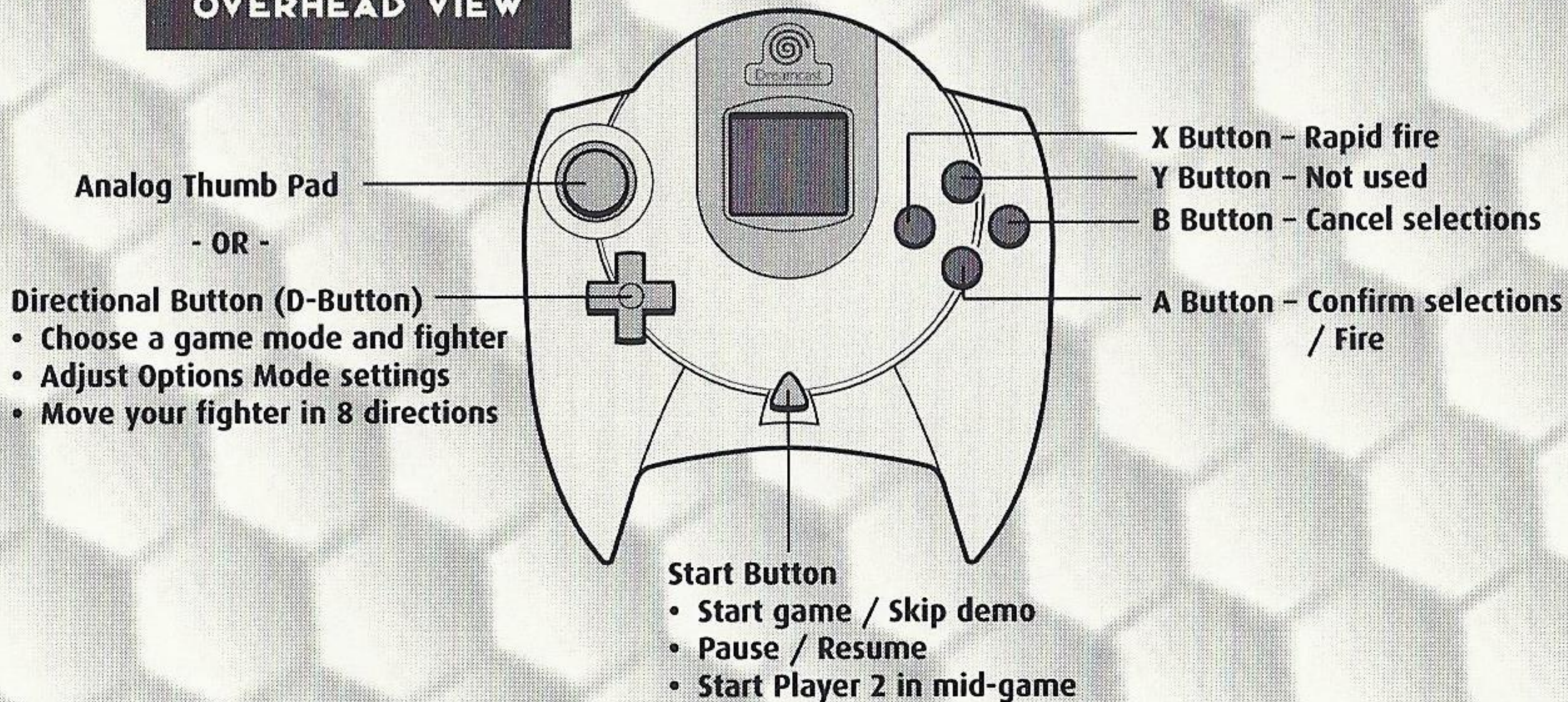
MARS MATRIX supports the Jump Pack vibration peripheral. When inserted into the Expansion Slot of a Sega Dreamcast controller or compatible peripheral equipment, the Jump Pack provides a vibration effect that can considerably enhance the gameplay experience.

Note: When inserted into Expansion Slot 1 of the Sega Dreamcast controller, the Jump Pack connects, but does not lock. If the controller is jarred, the Jump Pack may fall out during gameplay or otherwise inhibit game play operation.

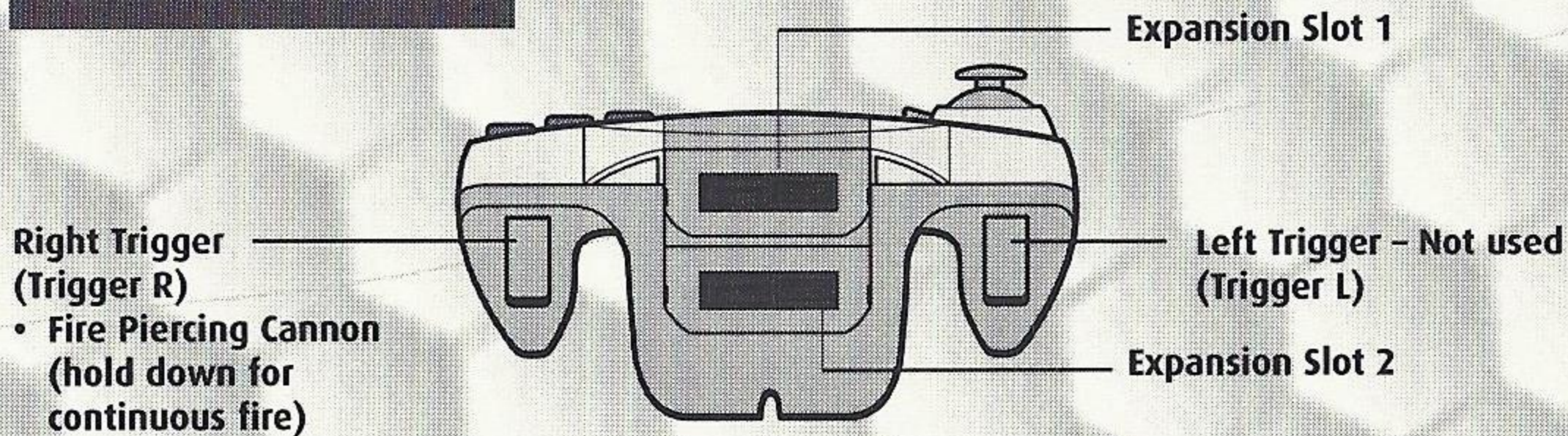


SEGA DREAMCAST CONTROLLER

OVERHEAD VIEW



FORWARD VIEW



SEGA DREAMCAST ARCADE STICK

X Button - Rapid fire

Start Button -

- Start game / Skip demo
- Pause / Resume
- Start Player 2 in mid-game

Y Button - Not used

Z Button - Fire Piercing Cannon (hold down for continuous fire)

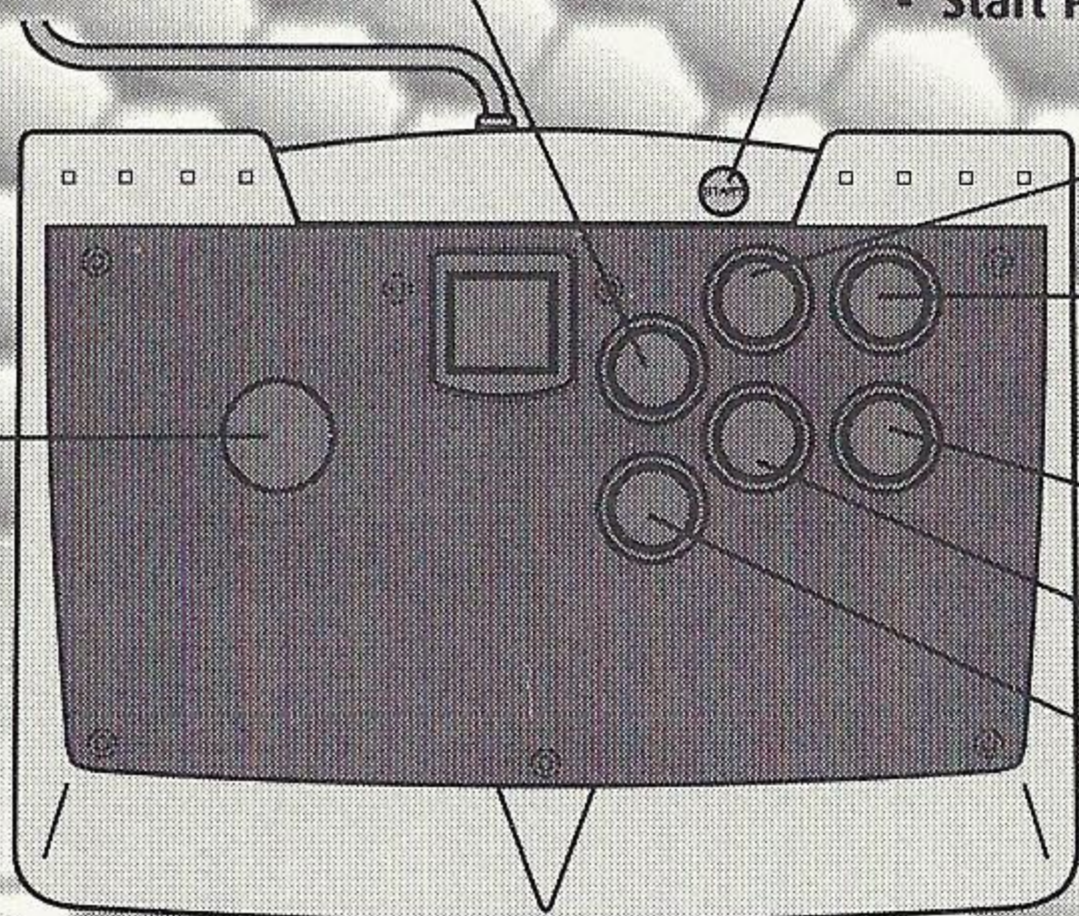
C Button - Not used

B Button - Cancel selections

A Button - Confirm selections / Fire

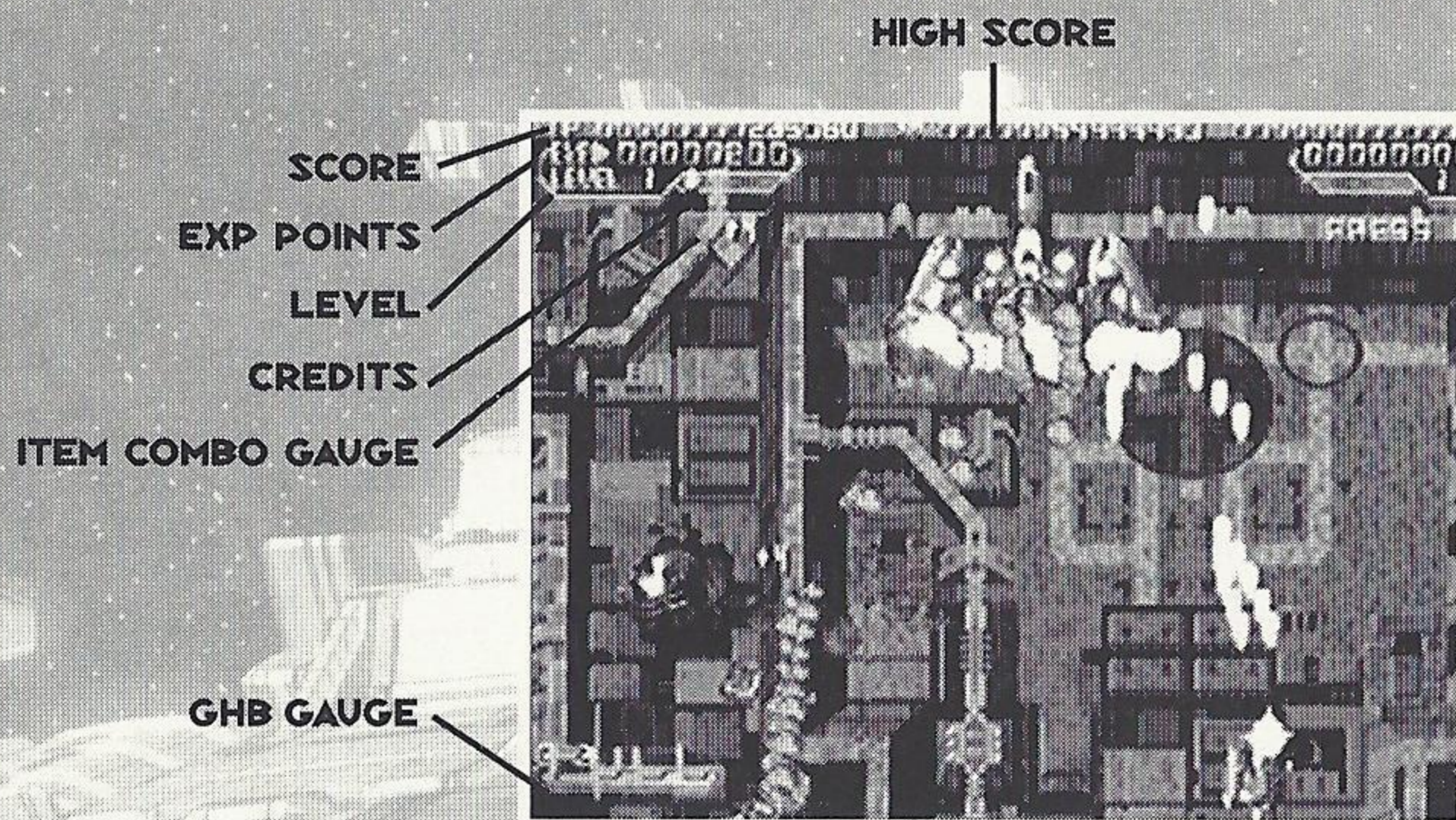
Joystick -

- Choose a game mode and fighter
- Adjust Options Mode settings
- Move your fighter



- The button assignments on pages 9-10 are the defaults. You can change them in Options Mode. (See page 18.)
- To return to the Title screen at any point during game play, simultaneously press and hold the A, B, X, Y and Start buttons. This will cause the Sega Dreamcast to soft-reset the software.

GAME SCREEN



HIGHSCORE

SCORE

EXP POINTS

LEVEL

CREDITS

ITEM COMBO GAUGE

GHB GAUGE

BOSS TIMER

The highest score achieved in the game mode.

Your current score.

Your current experience points.

Your fighter's current level.

Number of fighters remaining.

Time limit for gaining Item Combo Points. (See page 13.)

Gravity Hole Bomb Gauge: The bar decreases when you use absorption barrier Mosquito. You cannot use it again until the gauge refills.

(Not shown.) Displays when you're fighting a boss character. When the time runs out, the boss character retreats.

COMBAT RULES

EVOLVING YOUR MOSQUITO FIGHTER

When you defeat certain enemies or hit enemies with absorbed bullets, Experience Cubes appear and float onscreen. Collect these cubes (by flying over them) and your fighter will evolve up to level 8.

ITEM COMBO POINTS

When you collect Experience Cubes, you earn Experience Points. Your Experience Points are used as your basic score multiplier. Try to collect Experience Cubes quickly and get your score multiplier as high as possible.

GAME OVER

When your fighter is hit by an enemy bullet, you lose one fighter. (You don't lose your fighter by touching an enemy itself.) When all your fighters are lost, your game is over.

You can continue your game (up to 3 times) by pressing the Start Button during the countdown. When you restart a level, you can select a different fighter at the top of the game screen.

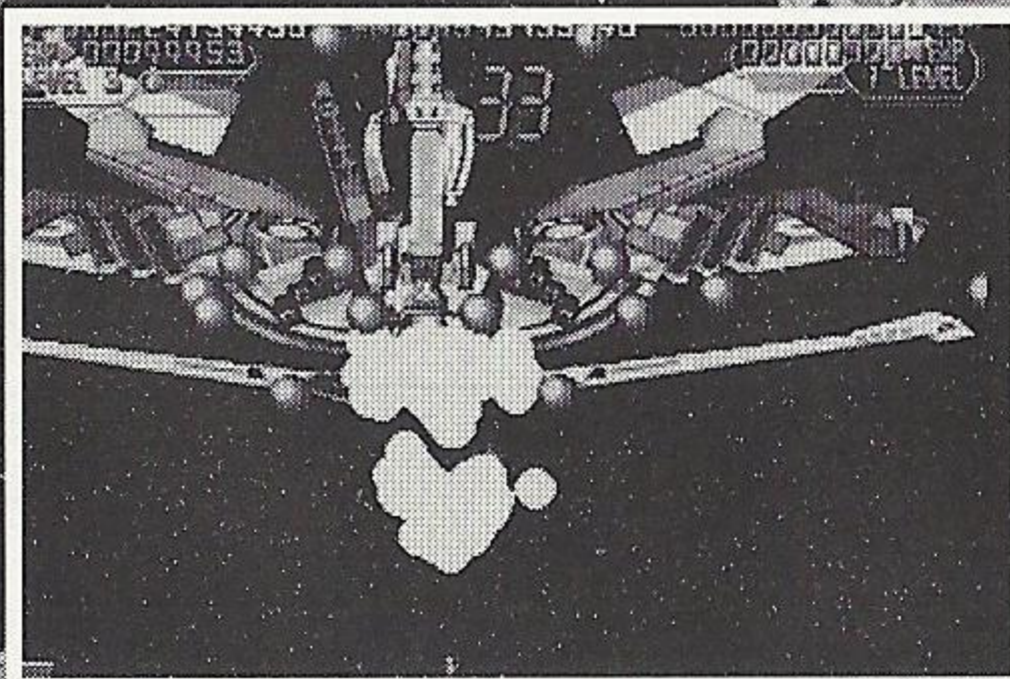
ATTACK MODES

NORMAL SHOT

- Press the *A* Button rapidly.
- Hold down the *X* Button to rapid-fire the normal shot.
- As you collect Experience Points and raise your fighter's level, the normal shot becomes more powerful.

PIERCING CANNON

- Release the *A* Button briefly and then press it again.
- Hold down the Trigger *R* to rapid-fire the Piercing Cannon.
- The Piercing Cannon is a powerful mid-range laser. The closer the enemy is when you deploy it, the more damage the shot will do.

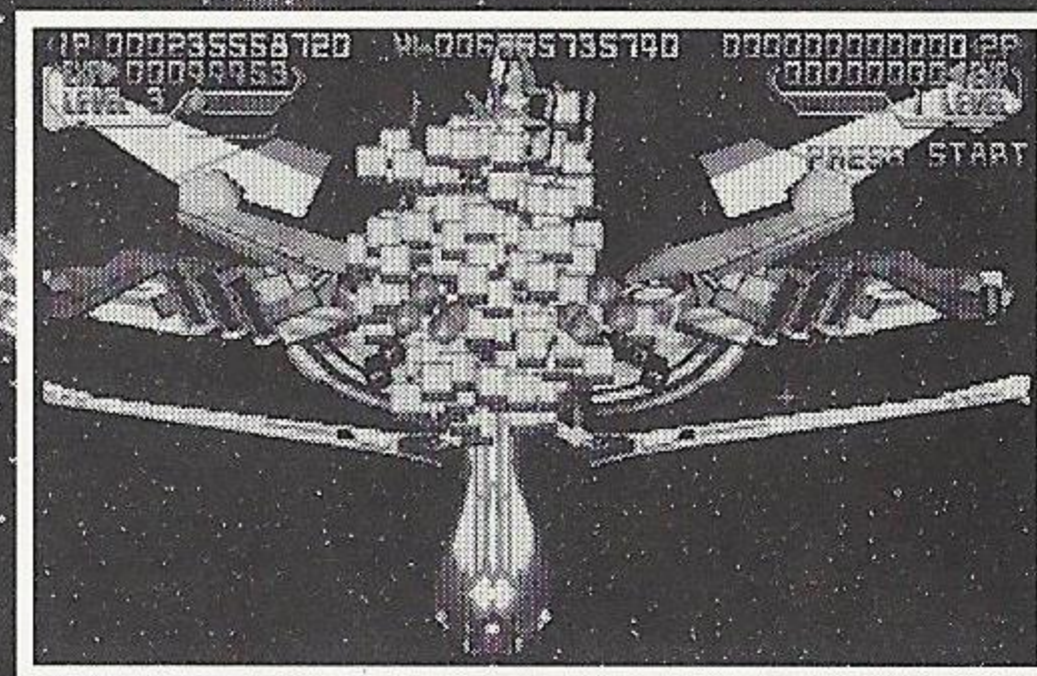
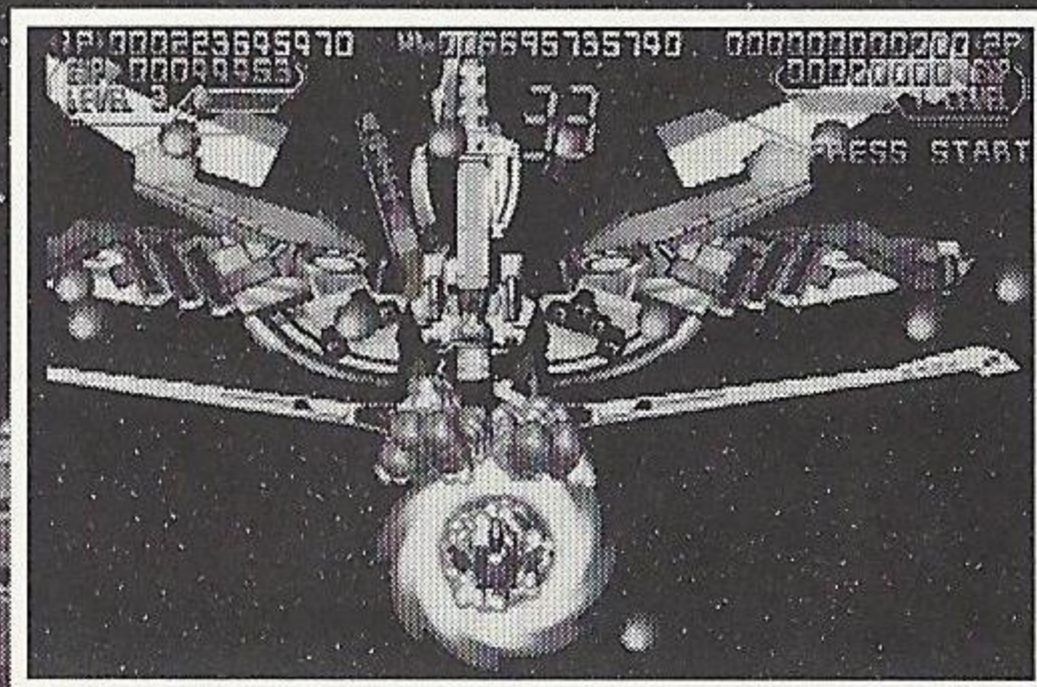


ABSORPTION BARRIER MOSQUITO

- When the *GHB* (Gravity Hole Bomb) Gauge is full, press and hold the *A* button.
- Your fighter will be surrounded by a barrier that absorbs and reflects enemy bullets. As you continue holding the *A* Button, the color bar in the *GHB* Gauge decreases. When you release the *A* Button, the absorbed bullets are discharged.
- Adjust the direction of fire with the *Directional Button* or *Analog Thumb Pad*.

GRAVITY HOLE BOMB (GHB)

- When the *GHB* Gauge is full, hold down the *A* Button until the full gauge is drained of energy.
- Gravity Hole Bomb is a super powerful explosive that attacks a large area on screen. The closer the enemy is to you when you deploy it, the more damage it wreaks.



GAME MODES

ARCADE MODE

A perfect conversion from the original arcade game.

ELITE MODE

Play an enhanced version with various options added to the original game. You can adjust Special Options settings for this mode. (See page 19)

ELITEMODE [A] Enemy positions are rearranged for the Sega Dreamcast version.

ELITEMODE [B] Enemy positions are the same as in the arcade version.

SCORE CHALLENGE MODE

For 1 player only. Choose a stage and score as high as you can. There is no limit to the number of fighters you have.

Score Challenge Mode has a special feature: When you defeat an enemy with the Piercing Cannon, a spray of small Stardust Cubes appears. Each one adds 1 point to your Experience Points when collected.

You can adjust Special Options settings for Score Challenge Elite Mode games. (See page 19)

RANKING

Check the score rankings in Arcade, Elite and Score Challenge Modes.

Use the Directional Button or Analog Thumb Pad, or press the Triggers L/R to look at score rankings for different game mode.





STRATEGY

Check out a strategy demo for each stage. You can buy strategy demos in Shop Mode (see page 20). Press the Start Button during a demo to return to the Title screen.

RANKING INFORMATION

<i>NAME</i>	<i>Player name</i>
<i>SCORE</i>	<i>Player score</i>
<i>EXP</i>	<i>Experience Points</i>
<i>STG</i>	<i>Highest stage reached</i>
<i>DIF</i>	<i>Difficulty level</i>
<i>CGS</i>	<i>Combo Gauge speed (Elite Mode only)</i>
<i>SPD</i>	<i>Fighter speed (Elite Mode only)</i>
<i>LVL</i>	<i>Initial level (Elite Mode only)</i>
<i>GHB</i>	<i>GHB Gauge charge speed (Elite Mode only)</i>

OPTIONS MODE

Adjust various game settings. Highlight an option by pressing the Directional Button or Analog Thumb Pad / and adjust by pressing /.

DIFFICULTY

Adjust the difficulty level for Arcade and Elite Modes from 1 (easy) to 8 (hard). The default is 4.

NUMBER OF SHIPS

Set the starting number of fighters for Arcade and Elite Modes from 1 to 7. The default is 3. (Fighters 4 to 7 can be purchased in Shop Mode; see page 20.)

CREDIT

Set the starting number of credits from 1 to 9 or FREE. The default is 3. (Credits 4 to 9 and FREE can be purchased in Shop Mode.)

SCREEN

Press the A Button to see a submenu where you can adjust screen size and positioning.

CONTROLLER

Press the A Button to see a submenu where you can change button assignments and turn the Jump Pack vibration ON/OFF (when a Jump Pack is being used).

SOUND

Press the A Button to see a submenu where you can choose STEREO or MONAURAL according to your speaker system. You can also sample background music (BGM) and sound effects (SE).





SPECIAL OPTIONS MODE

Special Options are additional options that can be purchased in Shop Mode (see page 20). Special Options settings affect the Elite Mode levels only in regular and Score Challenge Mode games (see page 16).

COMBO TIME Adjust the speed of the Item Combo Gauge countdown.

SHIP SPEED Adjust your fighter's speed.

SHIP LEVEL Adjust your fighter's starting level.

GHBCHARGE SPEED Set the speed at which the Gravity Hole Bomb Gauge charges.

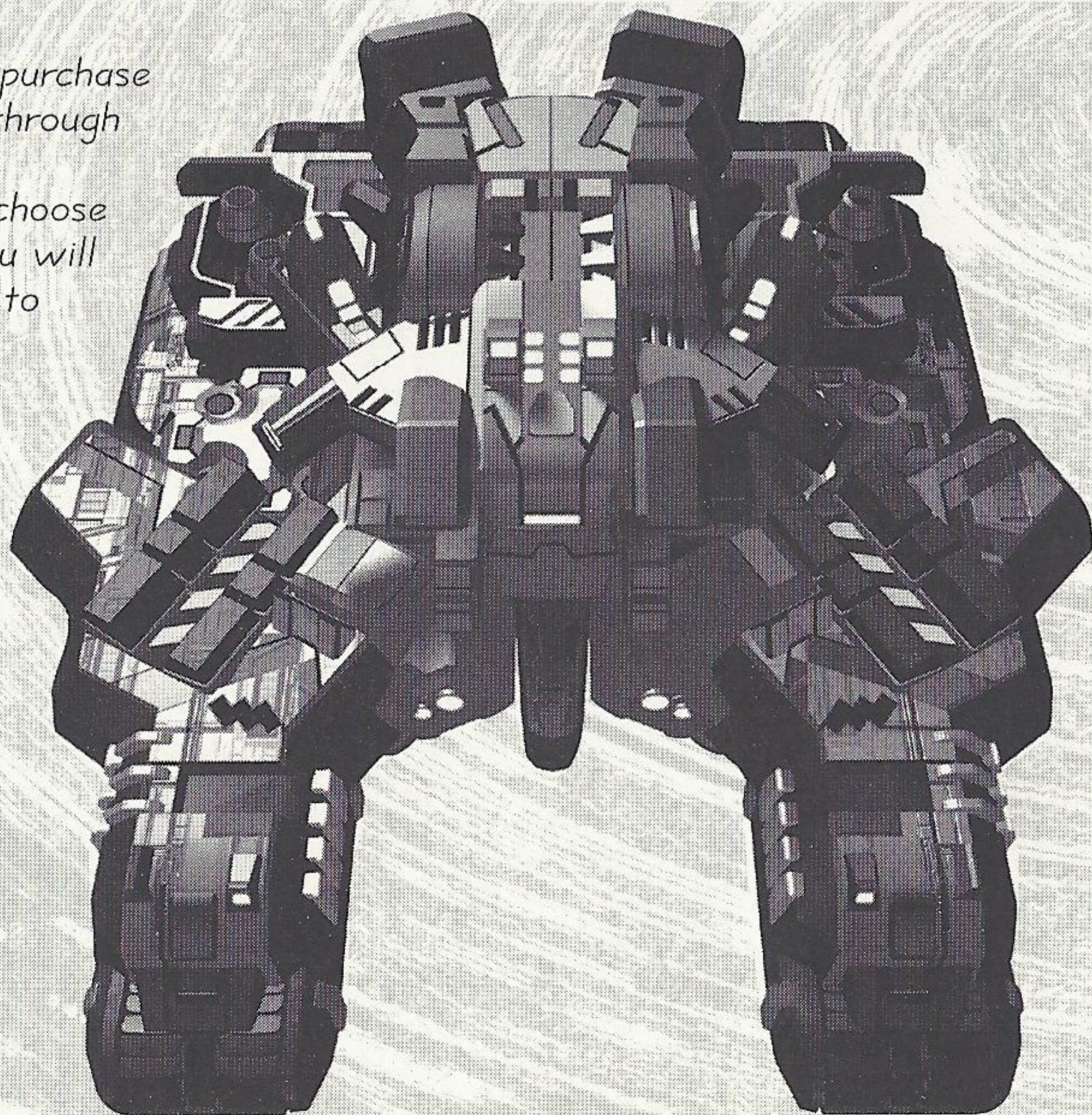
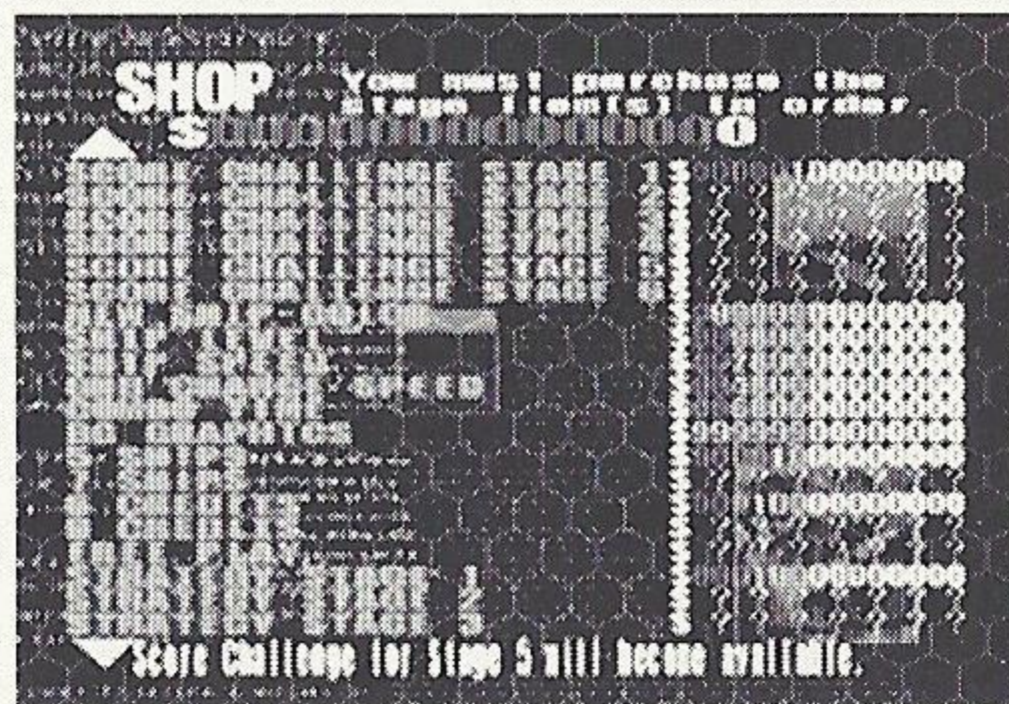
BG GRAPHICS Play with the background colors.

SHOP MODE

By advancing through the game and saving your score, you can earn enough "\$" to purchase various options. Your scores are converted to "\$" and you can see how much you have by accessing Shop Mode. In the Shop Mode screen, highlight an option and press the A Button to purchase it (if you have enough "\$").

GALLERY

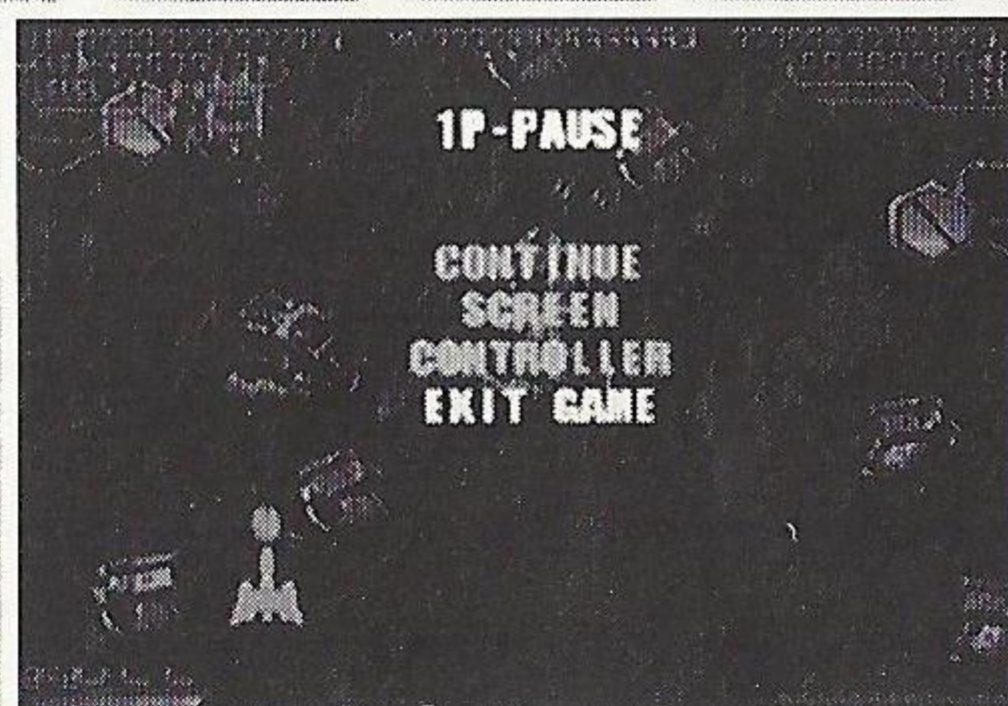
Go to Shop Mode to purchase the Gallery. Browse through artwork from MARS MATRIX. When you choose an unlocked image, you will be asked if you want to purchase it. Highlight YES or NO and press the A Button.



PAUSE MENU

Press the Start Button during gameplay to reveal the Pause Menu. Choose from the following options while paused:

- CONTINUE** Resume play (or press the Start Button to resume).
- SCREEN** Press the A Button to see a submenu where you can adjust screen size and positioning.
- CONTROLLER** Press the A Button to see a submenu where you can change button assignments and turn the Jump Pack vibration ON/OFF (when a Jump Pack is being used).
- EXIT GAME** Quit and return to the Main Menu.



SAVING/LOADING

Score rankings, option settings and other game information are automatically saved and loaded to an optional memory card. When they cannot be automatically saved or loaded (no memory card is inserted), a message will appear. Please follow the on-screen instructions.

This game requires a memory card with 7 free blocks to save a game file.

- An optional memory card must be inserted in Expansion Slot 1 in order to save and load a game file.
- Auto-save occurs when the Main Menu is displayed after gameplay. Auto-load occurs when you start the game.



TAKE IT TO THE EDGE. CAPCOM EDGE.

COLLECT CAPCOM EDGE PROOF-OF-PURCHASE POINTS EVERY TIME YOU BUY ANY SPECIALLY MARKED CAPCOM GAME TO EARN AMAZING GEAR LIKE SHIRTS, GAMES OR EVEN A PORTABLE CD PLAYER! PLUS, YOU'LL BE ABLE TO WIN QUARTERLY SWEEPSTAKES WITH KILLER PRIZES - LIKE YOUR OWN SIGNATURE SIZE ARCADE MACHINE.

DON'T FIGHT IT! SIGN UP TODAY.

JUST COMPLETE THIS ENTRY FORM OR SEND A 3X5 CARD WITH YOUR NAME, ADDRESS, PHONE NUMBER AND DATE OF BIRTH, AND PARENT'S SIGNATURE (IF UNDER 18) TO:

CAPCOM EDGE 475 OAKMEAD PARKWAY, SUNNYVALE, CA 94086

Offer valid 9/1/99 to 8/31/01. Maximum 2 awards per name and/or address. To claim awards send a completed prize redemption form, Capcom Edge or Fighters Edge proof-of purchase points (or original UPC code) and shipping and handling fees to Capcom Entertainment (see www.capcom.com for complete details). Award merchandise is subject to change and subject to availability while supply lasts. Allow 10-12 weeks for delivery. Items may be shipped separately. Extra points on orders will not be refunded. Points cannot be transferred or sold to another party for use for any other purpose. Capcom Edge points cannot be redeemed for cash. Capcom Entertainment may cancel, rescind or extend this offer at any time. Points are subject to verification. Only original Capcom Edge or Fighters Edge proof of purchase points or original UPC codes are valid from retail packages or from authorized Capcom Edge or Fighters Edge certificates. No reproductions allowed. Points valid only once per game purchase per person. The Capcom Edge program is valid only with current Capcom and Fighters Edge games. Those under age 18 must have parent or guardian signature to participate. The Capcom Edge program is operated by Capcom Entertainment and is open to residents of the United States and Canada excluding Quebec. Fraudulent claims will be voided. Proof of mailing does not constitute proof of delivery. Capcom is not responsible for lost, incomplete, damaged or illegible claim forms. Certified mail is recommended for orders. Sweepstakes winners will be determined in a random drawing from registered Capcom Edge members. No purchase necessary. Odds of winning depend on number of registered Capcom Edge members. Sony Computer Entertainment America, Nintendo of America and Sega of America are in no way affiliated with this program. Employees of Capcom Entertainment, its agencies, vendors and their immediate family members are not eligible for this offer. All decisions of Capcom Entertainment on all matters relating to this promotion are final. Recipients agree that awards are presented on the condition Capcom Entertainment, Sony Computer Entertainment America, Nintendo of America, Sega of America, their affiliates, subsidiaries, divisions or related companies, have no liability whatsoever, for any damages, injuries, losses or expenses of any kind resulting from acceptance, possession or use of the award. Award recipient is responsible for any and all Federal, State and local taxes if necessary. Offer is only good in United States and Canada excluding Quebec. Void where prohibited by law. Other restrictions may apply. All orders must be postmarked by 8/31/01.

© CAPCOM CO., LTD. 2001. © CAPCOM U.S.A., INC. 2001. ALL RIGHTS RESERVED. CAPCOM and the CAPCOM LOGO are registered trademarks of CAPCOM CO., LTD. CAPCOM EDGE is a trademark of CAPCOM CO., LTD.

CAPCOM®

www.capcom.com

NAME

ADDRESS

CITY

STATE

ZIP CODE

PHONE NUMBER

DATE OF BIRTH

PARENT'S SIGNATURE (IF UNDER THE AGE OF 18)

For information on Capcom's Privacy Policy visit: www.capcom.com

MARS MATRIX

CREDITS

Manual Design: Hanshaw Ink & Image; Marketing: Todd Thorson, Sean Mylett, Robert Johnson and Nate Williams; Creative Services: Jennifer Deauville and Marion Clifford; Package Design: Michi Morita and Jamie Gibson; Translation: Masayuki Fukumoto; PR: Melinda Mongelluzzo, Matt Atwood and Carrie Root; Special thanks to: Tom Shiraiwa, Miki Takano, Bill Gardner, Robert Lindsey and Customer Service.

90-DAY LIMITED WARRANTY

CAPCOM ENTERTAINMENT, INC. ("CAPCOM") warrants to the original consumer that this Sega Dreamcast GD-ROM ("GD-ROM") from CAPCOM shall be free from defects in material and workmanship for a period of 90 days from date of purchase. If a defect covered by this warranty occurs during this 90-day warranty period, CAPCOM will replace the GD-ROM free of charge.

To receive this warranty service:

1. Notify the CAPCOM Consumer Service Department of the problem requiring warranty service by calling (408) 774-0400. Our Consumer Service Department is in operation from 8:30 a.m. to 5:00 p.m. Pacific Time, Monday through Friday.
2. If the CAPCOM service technician is unable to solve the problem by phone, he/she will instruct you to return the entire GD-ROM to CAPCOM freight prepaid at your own risk of damage or delivery. We recommend sending your GD-ROM certified mail. Please include your sales slip or similar proof-of-purchase within the 90-day warranty period to:

CAPCOM
Consumer Service Department
475 Oakmead Parkway
Sunnyvale, CA 94086

This warranty shall not apply if the GD-ROM has been damaged by negligence, accident, unreasonable use, modification, tampering or by other causes unrelated to the defective materials or workmanship.

REPAIRS AFTER EXPIRATION OF WARRANTY

If the GD-ROM develops a problem after the 90-day warranty period, you may contact the CAPCOM Consumer Service Department at the phone number noted previously. If the CAPCOM service technician is unable to solve the problem by phone, he/she may instruct you to return the defective GD-ROM to CAPCOM freight prepaid at your own risk of damage or delivery, enclosing a check or money for \$20.00 (U.S. funds only) payable to CAPCOM. We recommend sending your GD-ROM certified mail. CAPCOM will replace the GD-ROM, subject to the conditions above. If replacement GD-ROMs are not available, the defective product will be returned to you and the \$20.00 payment refunded.

WARRANTY LIMITATIONS

ANY APPLICABLE IMPLIED WARRANTIES, INCLUDING WARRANTIES OF MERCHANTABILITY AND FITNESS FOR A PARTICULAR PURPOSE, ARE HEREBY LIMITED TO NINETY (90) DAYS FROM THE DATE OF PURCHASE AND ARE SUBJECT TO THE CONDITIONS SET FORTH HEREIN. IN NO EVENT SHALL CAPCOM BE LIABLE FOR CONSEQUENTIAL

MARS MATRIX

20 PTS.



MARS MATRIX

20 PTS.

OR INCIDENTAL DAMAGES RESULTING FROM THE BREACH OF ANY EXPRESS OR IMPLIED WARRANTIES.

The provisions of this warranty are valid in the United States and Canada only. Some states and provinces do not allow limitations on how long an implied warranty lasts or exclusions of consequential or incidental damages, so the above limitations and exclusions may not apply to you. This warranty gives you specific legal rights, and you may have other rights, which vary, from state to state or province to province.

ESRB RATING

This product has been rated by the Entertainment Software Rating board. For information about the ESRB rating, or to comment about the appropriateness of the rating, please contact the ESRB at 1-800-771-3772.

Sega is registered in the US Patent and Trademark Office. Sega, Dreamcast and the Dreamcast logo are either registered trademarks or trademarks of Sega Corp. All Rights Reserved. Made and printed in the USA. WARNING: Operates only with NTSC televisions and Sega Dreamcast systems purchased in North and South America (except Argentina, Paraguay and Uruguay). Will not operate with any other televisions or Sega Dreamcast systems. Product covered under one or more of the following U.S. Patents: 5,460,374; 5,525,770; 5,627,895; 5,688,173; 4,442,486, 4,454,594; 4,462,076; Re. 35,839; Japanese Patent No. 2870538, (Patents pending in U.S. and other countries); Canada Patent No. 1,183,276. The ratings icon is a trademark of the Interactive Digital Software Association. Sega of America Dreamcast, Inc, P.O. Box 7639, San Francisco, CA 94120.

SEGA



MARS MATRIX



MARS MATRIX
20 PTS.



MARS MATRIX
20 PTS.

TAKE IT TO THE EDGE CAPCOM EDGE

JOIN THE RANKS OF THE WORLDS GAMING ELITE AND EARN CAPCOM EDGE POINTS EVERY TIME YOU BUY THE CAPCOM GAMES YOU LOVE. COLLECT MORE POINTS AND GET ALL KINDS OF COOL STUFF LIKE T-SHIRTS, WATCHES, SUNGLASSES PORTABLE STEREOS AND OTHER CAPCOM EDGE GEAR DONT FIGHT IT! JOIN TODAY!

CAPCOM ENTERTAINMENT, INC. 475 Oakmead Parkway, Sunnyvale, CA 94086
©CAPCOM CO., LTD. 2001 ©CAPCOM U.S.A., INC. 2001 CAPCOM and the CAPCOM LOGO are registered trademarks of CAPCOM CO., LTD. MARS MATRIX and CAPCOM EDGE are trademarks of CAPCOM CO., LTD. ALL RIGHTS RESERVED. Sega is registered in the US Patent and Trademark Office. Sega, Dreamcast and the Dreamcast logo are either registered trademarks or trademarks of Sega Corp. All Rights Reserved. Made and printed in the USA.
WARNING: Operates only with NTSC televisions and Sega Dreamcast systems purchased in North and South America (except Argentina, Paraguay and Uruguay). Will not operate with any other televisions or Sega Dreamcast systems. Product covered under one or more of the following U.S. Patents: 5,460,374; 5,525,770; 5,627,895; 5,688,173; 4,442,486; 4,454,594; 4,462,076; Re. 35,839; Japanese Patent No.2870538, (Patents pending in U.S. and other countries); Canada Patent No. 1,183,276. The ratings icon is a registered trademark of the Interactive Digital Software Association. Sega of America Dreamcast, Inc, P.O. Box 7639, San Francisco, CA 94120.

CAPCOM®

SEGA®