

DEEP SCAN™

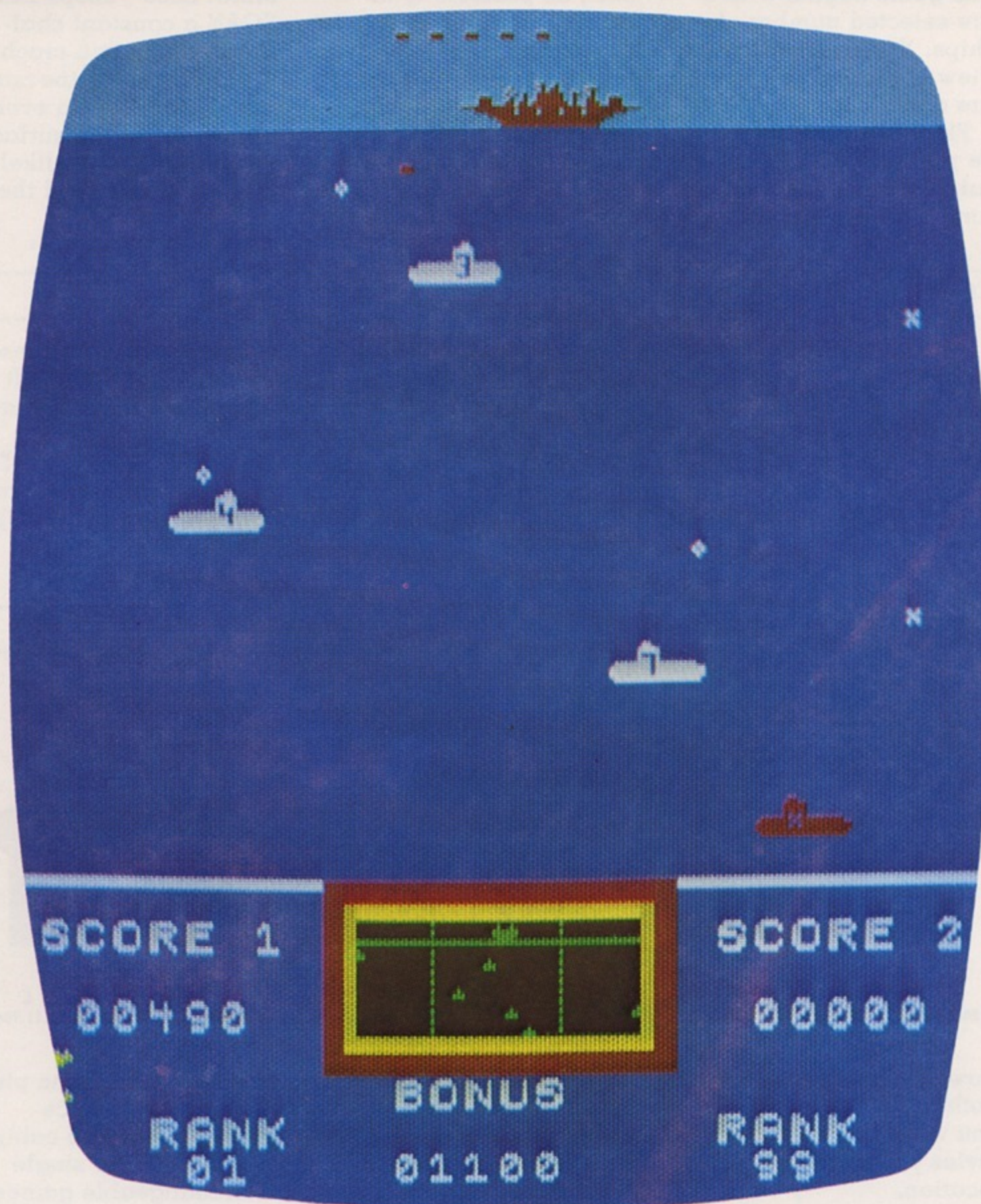


Dive! Dive! Dive into new video excitement with Gremlin's DEEP SCAN. This totally new game pits your players' battleship against a pack of marauding submarines. While you pack in the profits!

All DEEP SCAN action is in bright, exciting color. There's also an all new array of authentic sounds. Like the realistic "beep" of sonar. A warning claxon when the red bonus sub appears. Explosions of depth charges and mines. Even the sound of splashing water when charges and mines break the surface.

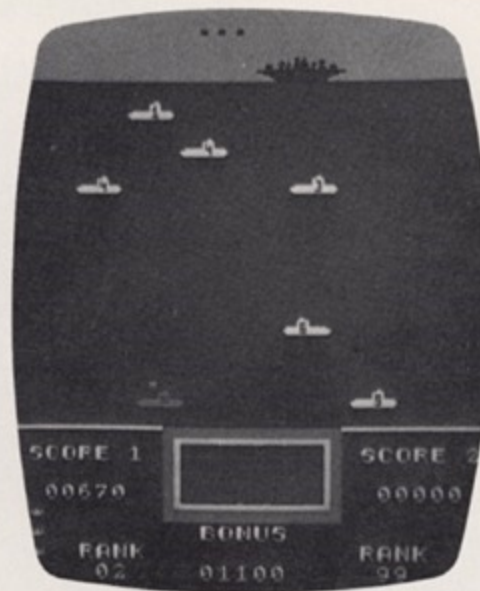
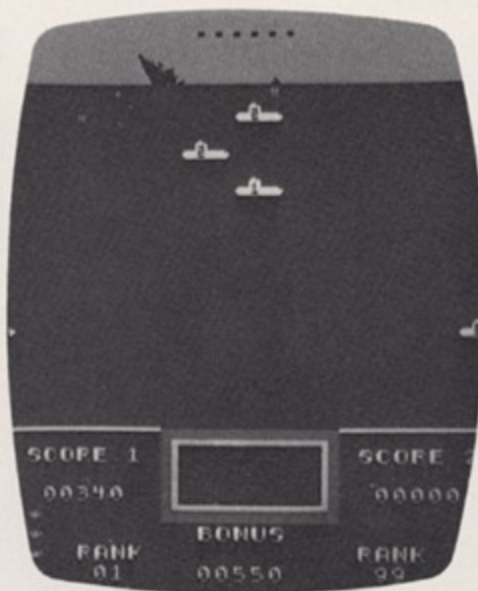
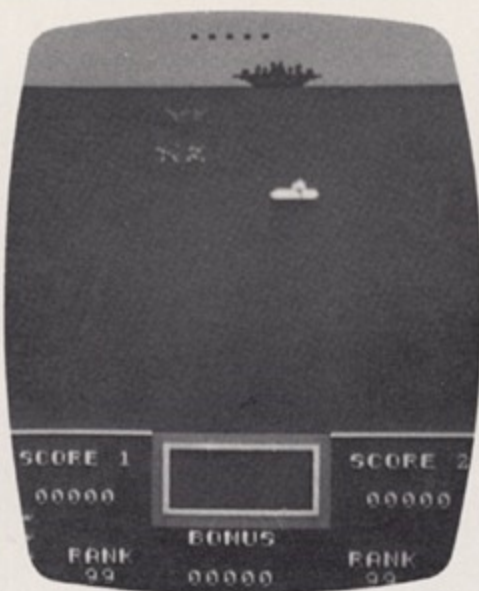
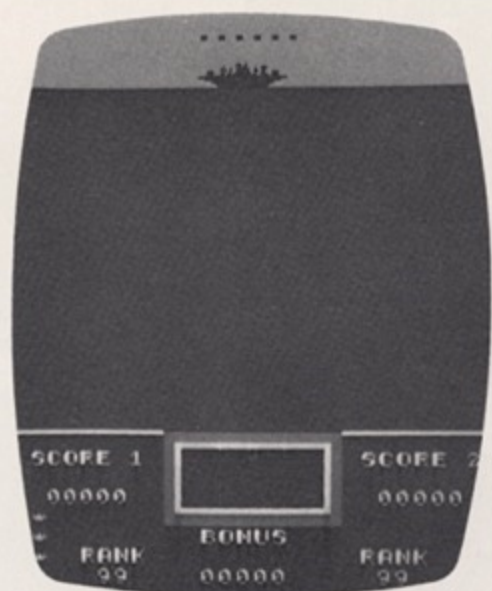
Another new feature of DEEP SCAN is the View Port. It shows your players the enemy subs *before* they appear on the game screen, so players can plan shots accordingly. There's also a new ranking feature, showing each player how they measure-up against the machine's previous 99 players.

And built with Gremlin's MultiPhase™ concept, DEEP SCAN keeps challenging your players as they improve their skills. So DEEP SCAN is sure to score a direct hit for your replay profits!



DEEP SCAN

PLAY ACTION



The game begins with a pre-selected number of ships. You must watch the View Port to know when to fire depth charges.

Plan your best shots, but be prepared for packs of subs as they appear on the screen. Try to hit as many

subs as possible to increase your score and gain bonus points.

When the special red sub appears, a hit with depth charges wins you bonus points!

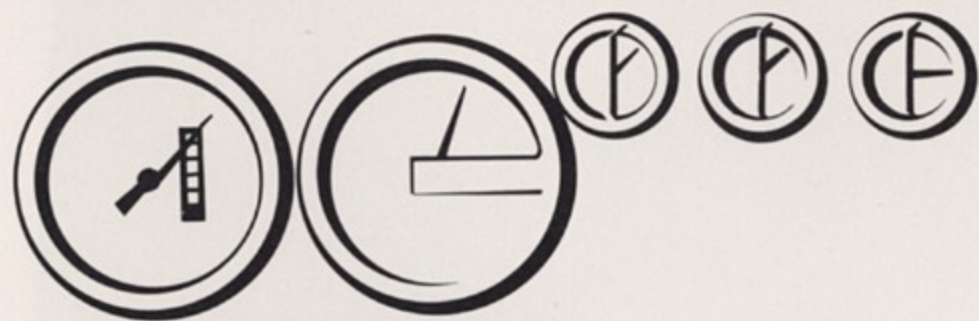
But it's not as easy as it looks. Because Gremlin's

MultiPhase™ keeps DEEP SCAN a constant challenge. When you reach a high point level, the mines come faster. At an even higher score, the surface subs become more likely to release mines. And the

more subs you miss, the more mines will be aimed at your ship.

The game ends when all your ships are sunk. But with DEEP SCAN, the fun never ends!

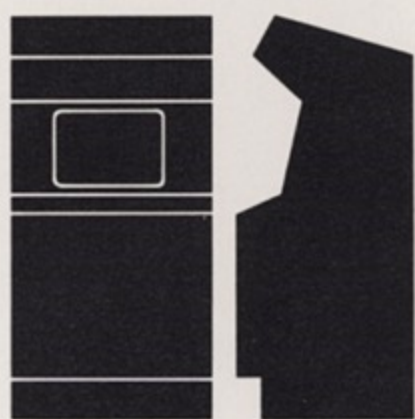
CONTROLS



Player Controls—These include Right and Left Ship Control Buttons and Right and Left Depth Charge Fire Buttons. The one and two player Start Buttons are prominently placed to encourage multi-player use.

Operator Controls—These feature Gremlin's exclusive E-Z ADJUST™ controls for volume and sound-off during advertising. You can easily change the number of player ships by simply setting a switch on the logic board.

CABINET MODELS



Arcade
25½" W x 67" H x 28" D
64.77cm W x 170.18cm H x 71.12cm D
290 lbs./132 kg.



Cocktail
22" W x 34" L x 24½" H
55.88cm W x 93.98cm L x 62.23cm H
80 lb./36 kg.



Stand-Around
40" H x 25½" W x 44" L
101.6cm H x 64.77cm W x 111.76cm L
200 lbs./91 kg.



MiniVideo
22" H x 21" W x 20" D
55.88cm H x 53.34cm W x 50.8cm D
80 lbs./36 kg.

Now Gremlin gives you both the video excitement you want and the cabinet styles you need to fit every location.

The Arcade cabinet can be equipped for either single game or dual. Our Cocktail and Stand-Around models can be

fitted for dual game play. And the new, space-saving MiniVideo cabinet is available for single interchangeable games.

See your Gremlin distributor today for more information on the Gremlin games available in these new cabinet styles.

DISTRIBUTED BY:

Gremlin/SEGA

GREMLIN INDUSTRIES, INC.
8401 Aero Drive, San Diego, CA 92123
(714) 277-8700 TWX 910-335-1621

The games people REALLY play.