



# Shenmue

## Passport

TM







***SHENMUE PASSPORT***



# CONTENTS

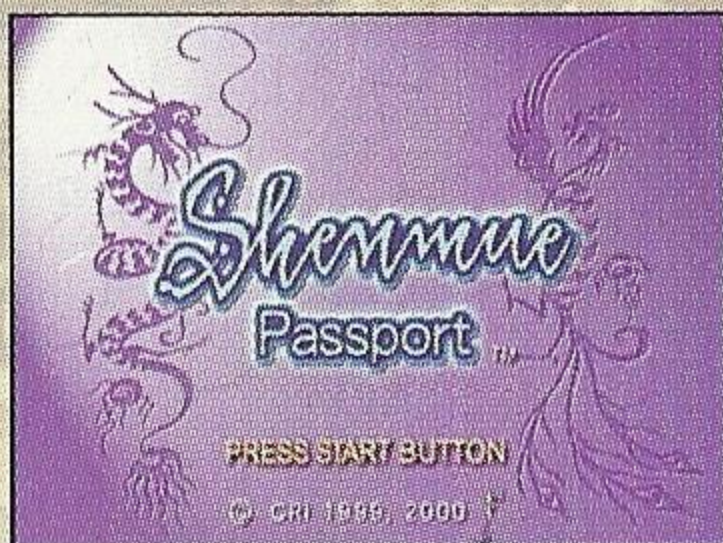
---

ABOUT THE SHENMUE PASSPORT	2
BASIC CONTROLS	4
MAIN MENU	5
INFORMATION	5
THEATER	6
MUSIC	6
PASSPORT	7
PASSPORT MENU	8
SHENMUE WORLD	8
NOZOMI'S MESSAGES	9
NETWORK RANKING	10
DATA REVIEW	11
ONLINE MANUAL	11
EVERYONE'S SPACE	12
shenmue.com	13
URGENT MESSAGES	13
PASSPORT USAGE AGREEMENT	14

---



# ABOUT THE SHENMUE PASSPORT



Use the “Shenmue Passport” in conjunction with your saved game data to provide support that will aid your game progression. Also, by connecting to the Internet, you can review an assessment of your game data or participate in the online network rankings.

In order to utilize the Shenmue Passport fully, the following 2 items are required:

1. A Dreamcast that can connect to the Internet.
2. A memory card (Visual Memory Unit [VMU] sold separately) containing saved game data from play of Shenmue.

Finally, it is necessary that you consent to the terms outlined in the Shenmue Passport Usage Agreement found on page 14 of this instruction manual.

## ■ Memory Card Usage

The data saved to your memory card is automatically accessed in order to provide you with the best possible service.

Accordingly, a memory card containing saved game data is required to fully utilize the services offered by the Shenmue Passport.

Before using the Shenmue Passport, be sure to insert the memory card containing saved game data from play of Shenmue into Expansion Socket 1 of the Dreamcast Controller.

## ■ Internet Usage

Depending on the menu items you select, you can access the Internet and obtain the latest information available.

Before using the Shenmue Passport, make sure you have completed the user registration process that enables you to use your Dreamcast Browser.



## ■ Dreamcast Web Browser User Registration

If you have not registered your Dreamcast, you will need to complete the registration process using the Dreamcast Browser. Refer to the Dreamcast Browser Instruction Manual for further help.

You can obtain the updated Dreamcast Browser from the Official Dreamcast Magazine.

Inquiries: SEGA Customer Services Department

Internet: [www.sega.com](http://www.sega.com)

Telephone: 1-800-USA-SEGA

### NOTES

1. For the latest information available, be sure to visit the [shenmue.com](http://shenmue.com) website.
2. When developing this software the usual standard research and testing methods were undertaken to ensure accuracy, however, note that discrepancies between this manual and the software may exist.
3. "Shenmue" is a fictional game and all group and/or personal names that appear in this game are fictitious.



# BASIC CONTROLS

The controls used when operating the Shenmue Passport are as follows. When other controls are necessary, follow the explanation that will appear on the screen.

## Dreamcast Controller

**Trigger L**

Zoom Out, etc.

**Trigger R**

Zoom In, etc.

**Analog Thumb Pad**

Moving the Cursor, etc.

**B Button**

Cancel

**Directional Pad (D-Pad)**

Selecting, etc.

**A Button**

Enter

**Start Button**

Pause, Help, etc.

To soft reset the Dreamcast and return to the title screen at any point during game play, simultaneously press and hold the **A**, **B**, **X**, **Y** and Start Buttons.



# MAIN MENU



The four items that can be selected from the main menu of the Shenmue Passport are as follows:

- Information
- Theater
- Music
- Passport



## Information

In this section, seven different characters that appear in the game explain about various game features.

Ling Sha Hua	: Prologue
Ryo Hazuki	: Battle System
Nozomi Harasaki	: Mini-Games
Kenzo Oishi	: Magic Weather
Mark Kimberly	: Money
Hong Xiu Ying	: Game System
Chai	: QTE







## Theater

In this section, it is possible to playback any event movies that have already been viewed during gameplay and some promotional Shennmue movie trailers.

The further your game progression, the more event movies will available here for playback.



## Music

Here you can playback a number of musical selections available in Shennmue. The further your game progression, the more musical selections will be available for playback. Including the Shennmue main theme, Sha Hua's theme, etc., by the time you clear the game there will be over 30 songs available here for playback.



■ **SNG: Playback One Song**

■ **REP: Repeat playback**

■ **ALL: Playback All Songs**

■ **RND: Random playback**

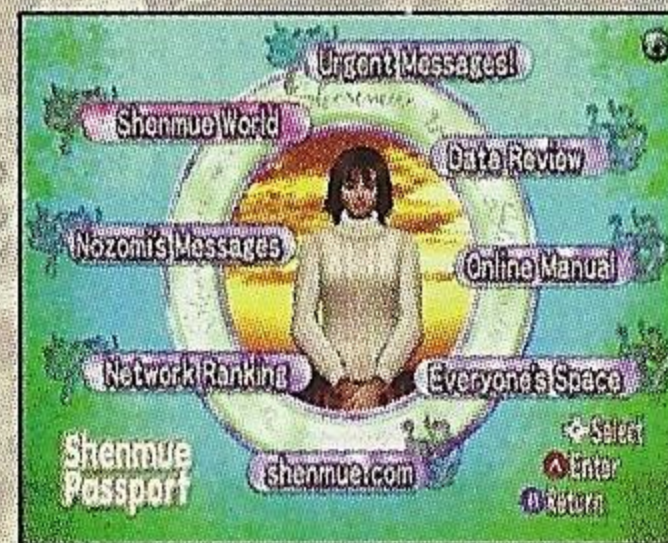




## Passport

Connect to the Internet via this item to obtain a variety of Shenmue support. Eight menu items are available in this section.

- ◇ Shenmue World
- ◇ Nozomi's Messages
- ◇ Network Ranking
- ◇ Data Review
- ◇ Online Manual
- ◇ Everyone's Space
- ◇ shenmue.com
- ◇ Urgent Messages



Is there a character, location, or move you would like to find out more information about? Have you become stuck while playing Shenmue and need a hint or some advice? Would you like to check out the mini-game score rankings? If so, then access the Internet and take advantage of a number of fun and helpful services. For detailed information on the services available, refer to p. 8.

To connect to the Internet and use the Shenmue Passport services, you are required to consent fully to the terms outlined in the Shenmue Passport Usage Agreement found on page 14 of this instruction manual.

By connecting to the Internet using the Shenmue Passport, it is assumed that you fully consent to the terms outlined in the Shenmue Passport Usage Agreement, so be sure to read and understand these terms fully before connecting to the Internet.

Connection to the Internet takes place via the Passport menu. The telephone numbers setup for use with the Dreamcast Browser will be used to dial up and connect to the network.

1. An icon will be displayed at the upper right corner of the screen for the duration you are connected to the network.
2. While dialing, press **Y** to display the telephone number being dialed and while connected to the network, press **Y** to display the total time connected in the lower left corner of the screen.
3. If you exit from the Passport menu or remain idle (e.g., if you leave the controller untouched) for more than three minutes, the line will automatically be disconnected.



# PASSPORT MENU



## ■ Shenmue World

Here you will find a wealth of information about the world of Shenmue.

The three sections available are Places, Profiles and the All Moves Scroll.



### ◇ Places

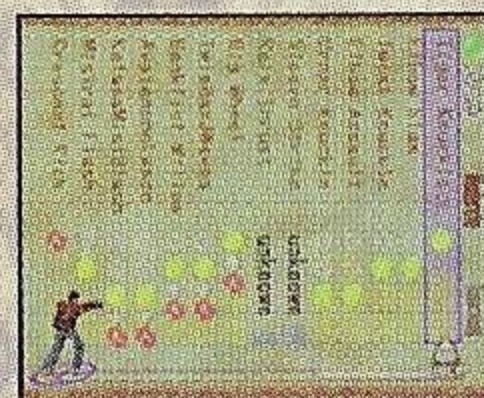
Locations within the Shenmue world that you have visited during game play will be marked with a checkmark. To view detailed information about a location with a checkmark, use the Analog Thumb Pad to select the location and press **A**.



### ◇ Profiles

Here you can view detailed information on the various characters that appear in Shenmue.

As you progress through the game, the new characters you meet will be added to this section.



### ◇ All Moves Scroll

This section provides detailed information on the martial arts moves that Ryo has mastered. For each move available, view details such as the origin and history of the move, techniques, data about your usage and accuracy rate, etc.





## ■ Nozomi's Messages

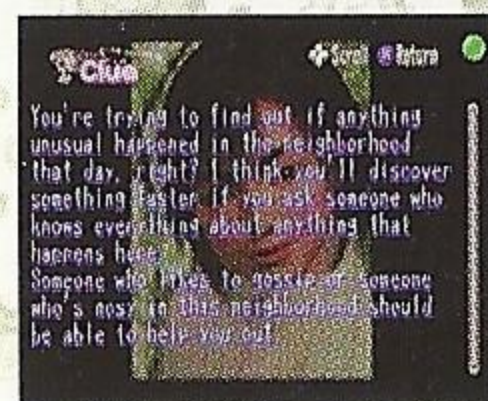
In this section, Nozomi will provide you with game information or hints tailored to match your current game progression level.

Because new information is downloaded every time you connect via the Internet, each individual user can receive the appropriate information needed for their particular situation within the game.



### ◇ Information

Here you can view a wide range of information regarding Shenmue, tips to aid your gameplay, advice on settings and other useful game information. The information available here will change according to your game progression.



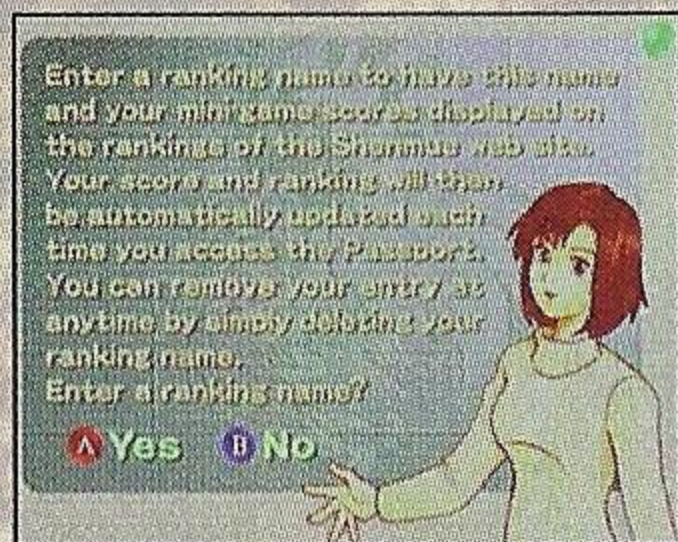
### ◇ Clue

If you find yourself stuck during gameplay, visit Nozomi's Messages and provided that your data indicates that you are, despite your best efforts, truly stuck (as determined by your play data) this section will become available. When this happens select this item to view a clue specifically tailored to assist your game progression.

*Whenever you are stuck,  
be sure to come and visit!*







## ■ Network Ranking

Enter your ranking name here to participate in world, country and state network rankings of mini-game scores. Once your entry name is registered, every time you access the Shenmue Passport your network ranking scores will be automatically updated.

\*Out of all the mini-game scores saved to your memory card (VMU), the best overall scores are automatically used for your rankings. There are no distinctions made between individual files within the memory card.

\* Washington D.C., Guam and the U.S. Virgin Islands are included in the state rankings.



### ◇ Name Entry

Input the name you wish to be used as your ranking name. This name will be used for all the network rankings. Your ranking name should consist of between 4 and 12 characters.

\*Certain inappropriate terms can not be used for name entry.



### ◇ Game Selection

Use the D-Pad to select a mini-game. A total of eight mini-games such as Space Harrier, Hang On, etc., comprise the network rankings. Some mini-games will not become available until certain conditions have been met within the game. In addition, the rankings for each mini-game are separated into world, country and state categories.



### ◇ Rankings Display

The network rankings data for the selected mini-game will be accessed from the Internet. This information is updated on a daily basis so you are able to check your ranking level. Note that when 2 people have the same exact score, the ranking order is determined according to the order in which network access occurred.

Network ranking related Q&A and other cautionary information is available on the shenmue.com website. You are strongly advised to review this information before entering the network rankings.



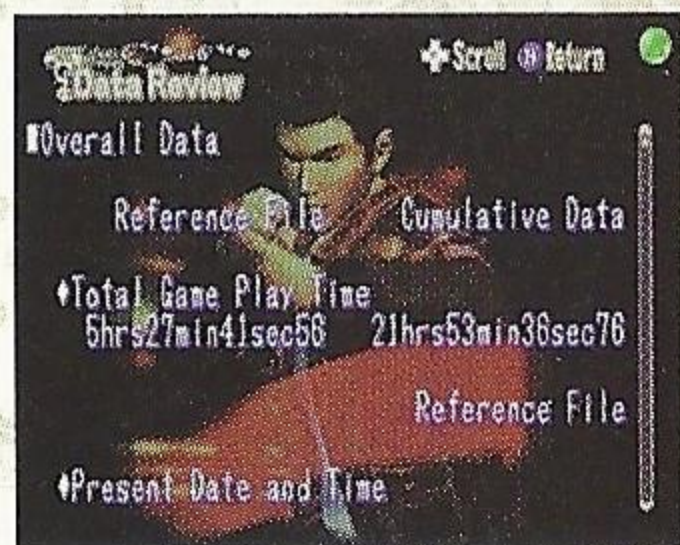


## ◆ Name Edit/Entry Deletion

Select the Edit/Delete icon to change or remove your ranking name. If you delete the entire ranking name and press enter, this will automatically delete your entry from the network rankings.

### CAUTIONS REGARDING NETWORK RANKINGS PARTICIPATION

By entering into the network rankings, your ranking name, mini-game score data and the country/state in which you live will be displayed on the Shenmue website. Should the area in which you live be displayed incorrectly, ensure that the correct information is registered to the Dreamcast Browser settings. Note that this information can be viewed by anyone connected to this website. Entry requires that you consent to the terms outlined in both the Shenmue Passport Usage Agreement found on page 14 of this instruction manual and the terms of agreement stipulated by the Dreamcast Browser software you are using.



## ■ Data Review

Here you can review a detailed analysis of your Shenmue play data. In addition to statistics such as the number of times the game has been cleared, you can find out various information such as how many opponents you have defeated in battle or how many cans of soft drink you have purchased.

The “Referenced Data” column appearing on the left indicates data referenced from the selected file. The “Cumulative Data” column appearing on the right indicates an average of the sum total of all the data saved to the inserted memory card.



## ■ Online Manual

This online manual provides varied and detailed information about how to play Shenmue.

Be sure to consult this online manual if you need further information.





## ■ Everyone's Space

A number of interesting items are available here.

- Want to find out what kind of weather is predicted for tomorrow in the world of Shenmue 1986?
- Want to learn the age, body length and weight of that kitty?
- Looking for that special item for your Shenmue collection?

Then be sure to visit.



## ◇ Shenmue Goodies

This site is a place where you can exchange a “winning can” item obtained in the game for Shenmue character data. Winning cans are available from the vending machines that appear in the game but note that their appearance is rare so good luck!

1. Select the character you wish to download.
2. Download one character for each winning can you obtain.

(Despite the number of winning cans you have in your possession, characters can only be downloaded if there are a sufficient number of free memory blocks available. The Shenmue Goodies program requires 50 blocks and each character to be downloaded requires 2 blocks of memory. It is recommended that you ensure your memory card has sufficient memory available before using the Shenmue Goodies service. )



## ◇ Free Market

You can trade items obtained during gameplay with unique items that can only be found here.

## ◇ What's New

Here you can find out about the latest news and services available.



## NOTE: Copying or Deleting Character Data

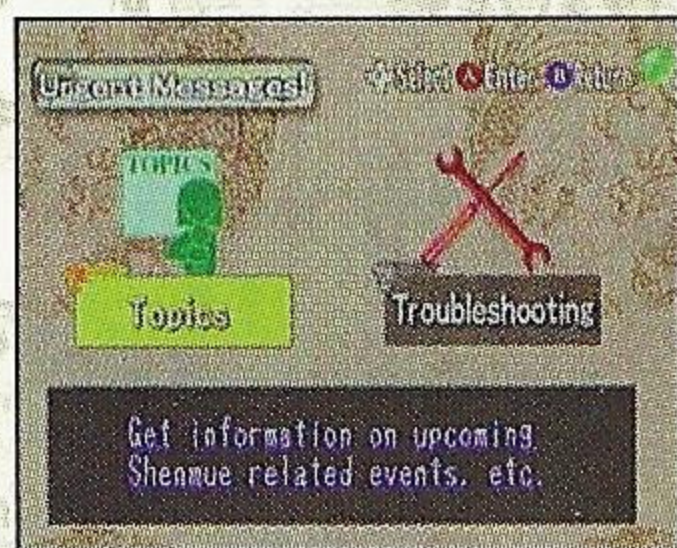
Copying/deleting of Shenmue Goodies character data is done from the Dreamcast file menu screen.

1. Leave the disc door open and turn the Dreamcast power ON to display the Dreamcast file menu screen.
2. Select "File" from the main menu.
3. Select a file from the memory card inserted and copy or delete the file as required.



### ■ [shenmue.com](http://shenmue.com)

Use this link to access the official Shenmue website. View our beautiful graphics, find out about the latest events and get the hottest Shenmue information available.



### ■ Urgent Messages

Here you will find various Shenmue related announcements. The icon will flash whenever new information is available.

#### ◇ Topics

Learn about the latest event information.

#### ◇ Troubleshooting

Important messages from the Shenmue Team are posted here.



# SHENMUE PASSPORT USAGE AGREEMENT

All prospective users of the Shenmue Passport are required to read, understand and consent to all of the items outlined in this agreement before using the Shenmue Passport.

1. While using the Shenmue Passport, save data from the inserted memory card (VMU) will automatically be uploaded from your memory card to the Shenmue server, this data will be analyzed and then downloaded back to your memory card. You must consent to this in order to use the Shenmue Passport.
2. By participating in the network rankings service provided by the Shenmue server, you consent to having information downloaded from your memory card such as your high score data, ranking name, and general location information (the area code, state and country in which you live) displayed on the Shenmue server and viewed by all other Shenmue Passport users. (To further protect your privacy, it is recommended that you select your ranking name with care.)
3. You must consent to accepting full responsibility for any and all losses or damages incurred via the uploading/downloading of data or via the display of ranking information described above.



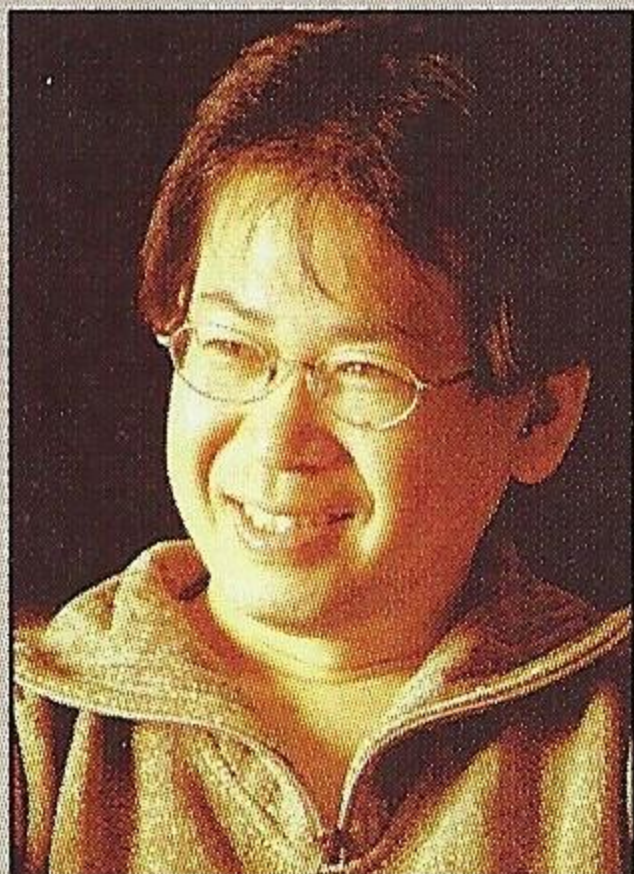
4. In addition to this, the Shenmue Passport Usage Agreement, you are also required to consent to the terms outlined in the Dreamcast Web Browser End User Agreement applicable since your registration to the Dreamcast Web Browser.

We hereby promise that the data that you upload to the Shenmue website will, in addition to being used for development of future Shenmue versions, only be used for the purposes outlined in this manual and shall not be released or published to any third parties.



# CREDITS

Produced and Directed by



**Yu Suzuki**

## SEGA of Japan Manual Production Staff

*Translation/DTP*

Monika Hudgins

*Designer*

Yoichi Takahashi

*Writer*

Eiji Ogawa

*Supervisor*

Kaoru Ichigozaki

The following credits list the staff who worked on the localization, marketing and manual production for the U.S. version of Shenmue. Credits for the original development and the main localization staff of AM2 are listed in the game itself.

## SEGA of America Product Development

*Localization Coordination*

Jin Shimazaki

Shinobu Shindo

Osamu Shibamiya

*Dialogue Editors*

Jason Kuo

Chris Lucich

*Test Lead*

Mike Rhineheart

*Assistant Test Leaders*

Berjes Enriques

William Kus

Ron Rodriguez

*Testers*

Tom Fong

Brian Miller

Antonio Eco

Alan Hsu

Mabel Chung

Steve Peck

Ricky Ribble Jr.

Blair Sondker

Christina Mendez

## Marketing Staff

*Product Manager*

Robert Alvarez

*Associate Product Manager*

Dennis Lee

*Director Product Marketing*

John Golden

*Creative Services*

Robert Schonfisch

Angela Santos

Simon McIlroy

## Special Thanks

Peter Moore

Chris Gilbert

Charles Bellfield

Karen Brown

Teri Higgins

Molly Fitzpatrick

Kathleen Joyce

Tetsune Nakazono

Utako Okukawa

Tomo Inoue



# NOTES





4

©CRI 1999,2000 Presented by AM2 of CRI <http://www.shenmue.com/>