

MONACO GP™



It's the hottest new driving game on the amusement circuit!

Gremlin's new Monaco GP, with a whole new world of speed, danger and hard driving video thrills!

Just look at these exciting Monaco GP features. There's full stereo sound, to make your players feel like they're surrounded by speeding race cars.

The race course is unique and full of hazards. Like oil skid zones and rain puddles that splash as cars pass through. Dark, dangerous tunnels. Two-way traffic on bridges. Tricky gravel roads. Even an ambulance racing the course with siren screaming, demanding the right-of-way!

There's also a Dual Play Limit, based on time and the number of cars, and Extended Play, which ends when all the cars have crashed.

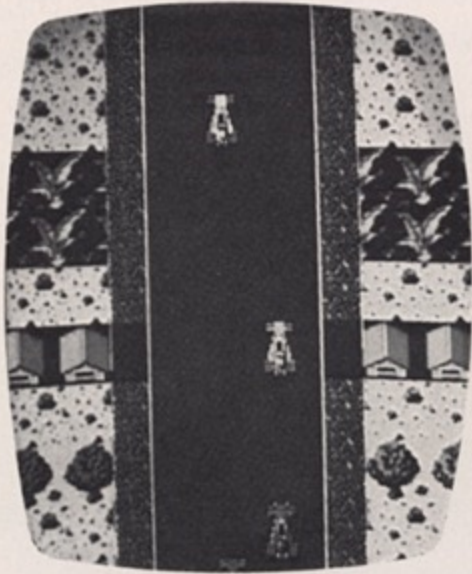
And the new ranking display is sure to encourage your players' competitive spirit. So Monaco GP means surer replay profits for you!



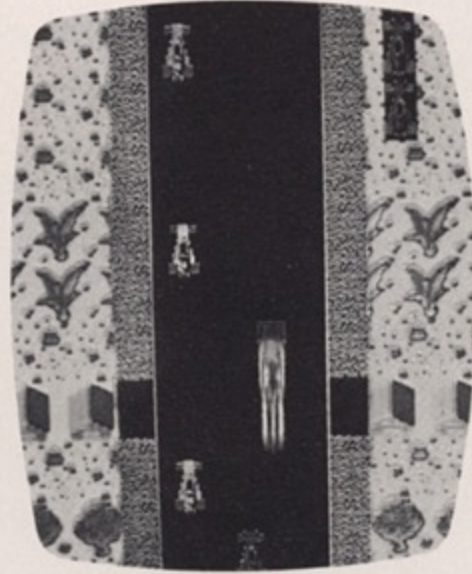
Gremlin®/SEGA®

MONACO GP™

PLAY ACTION

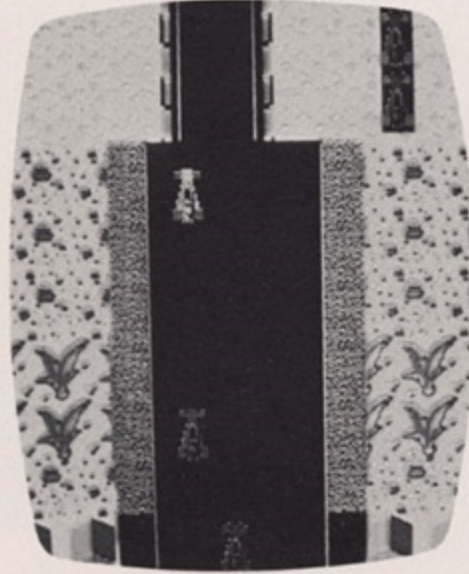


Monaco GP begins when you shift the gear lever into Low and step on the gas. Now shift gears into High and drive as fast as you can while avoiding the hazards and a crash.



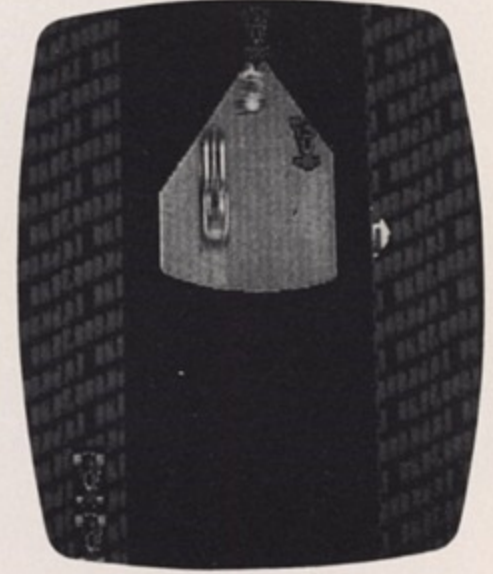
But look out! You must reduce your car speed while crossing the two-way bridge, or you'll crash.

Your score is doubled while driving through a tunnel, skid zone or puddle.



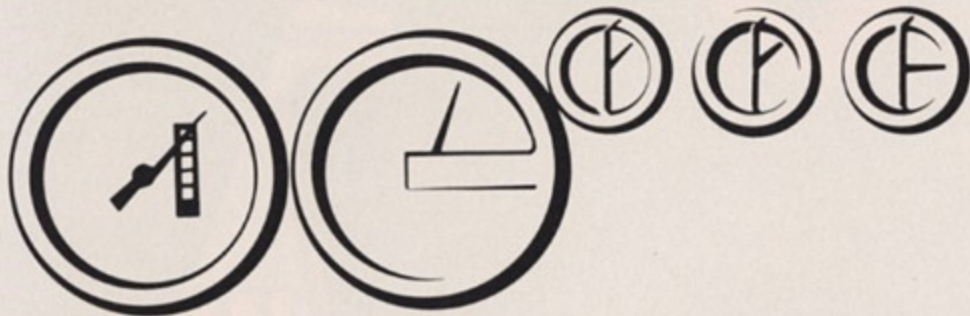
And both player and computer cars speed up after 6000 points are reached, to increase the challenge.

The game ends when the timer runs to zero. Extended Play is awarded if a 2000



point score is reached. Additional cars are added, for extra thrills, at 4000, 6000 and 8000 points. Game play then continues until all cars have crashed.

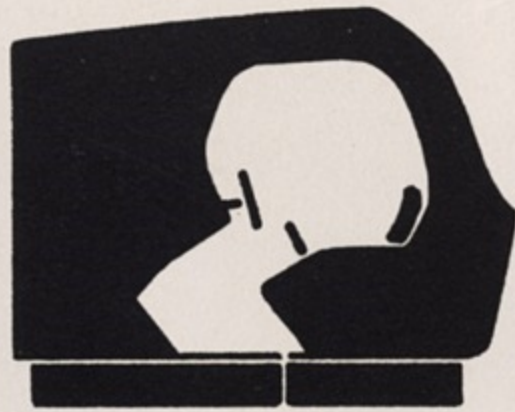
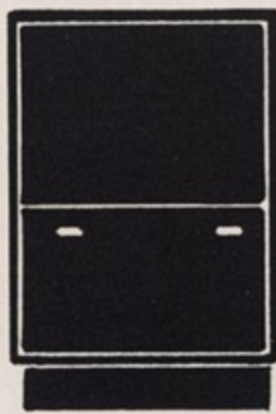
CONTROLS



Monaco GP player controls include a padded racing steering wheel. A stick-shift lever to increase the RPM's. A responsive accelerator pedal.

Even a full complement of working instrument gauges!

CABINET MODELS



The unique Monaco GP cabinet is designed for player appeal. It's covered with stylish, eye-grabbing graphics full of color and exciting racing details.

SPECIFICATIONS:

27½" W X 59" H X 67" D
69.85cm W X 149.86cm H X 170.18cm D
120V — 200 W — 50-60 Hz.
20" color CRT
330 lbs./150 kg.

Gremlin/SEGA®

The games people REALLY play.

GREMLIN INDUSTRIES, INC.
8401 Aero Drive, San Diego, CA 92123
(714) 277-8700 TWX 910-335-1621

DISTRIBUTED BY:

©GREMLIN INDUSTRIES, INC. 1979