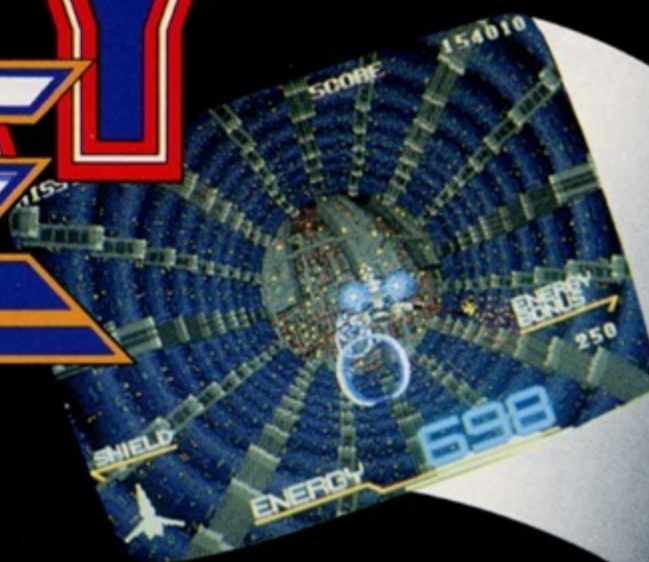
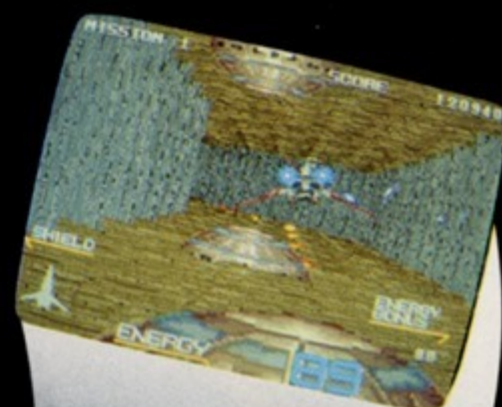
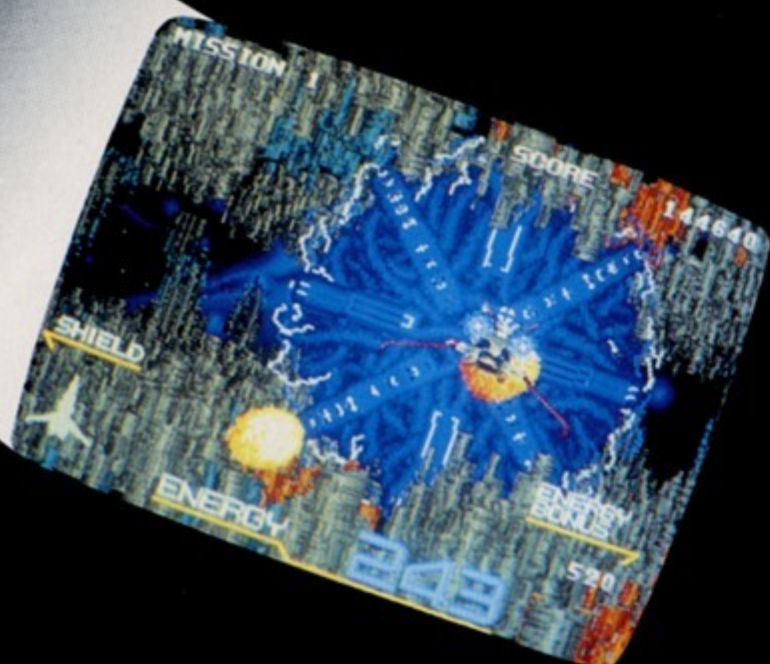


GALAXY FORCE



EXPERIENCE THE "SPIN" OF A LIFETIME !



SUPER DELUXE TYPE

Faithfully simulating the commands of the right-hand side control stick, the whole cockpit inclines 15 degrees in two directions, as well as speedily turning 335 degrees to both the right or left.

MULTI-WAVING CABINET

Players get ultimate realism with the revolutionary free moving type cockpit which allows the player to experience the maximum thrill in simulated spaceship flight.



SEGA®

COMPACT "DELUXE TYPE" MODEL IS NOW AVAILABLE!

As the pilot guides the craft by skillfully utilizing a realistic control stick, the seat inclines in 2 directions up to a maximum of 15 degrees, as well as moving to the right and left at a 30 degree angle every command instantaneously reproducing challenging outer space battle scenes. This truly unique videogame offers even more in realistic "body-sensing" thrills than the "Super Deluxe Type." Of particular importance to the space and income conscious operator, is the fact that its light and compact cabinet allows for easy installation in almost any location, thus enabling you to maximize your earnings.

DELUXE TYPE



UPRIGHT TYPE

All the play features of GALAXY FORCE are included in the compact upright model.

UPRIGHT TYPE

Outer Dimensions : 24.8 in., 63 cm. (W)
37.4 in., 95 cm. (D)
70.5 in., 179 cm. (H)

Weight : 297 lbs., 135 kg

Monitor : 20 inch color

Power Supply : 100•240V AC 50/60Hz 200W

DELUXE TYPE

Outer Dimensions : 40.6 in., 103 cm. (W)
68.9 in., 175 cm. (D)
66.9 in., 170 cm. (H)

Weight : 550 lbs., 250 kg

Monitor : 20 inch color

Power Supply : 100•240V AC 50/60Hz 600W

SUPER DELUXE TYPE

Outer Dimensions : 111.8 in., 284 cm. (W)
111.8 in., 284 cm. (D)
73.2 in., 186 cm. (H)

Weight : 880 lbs., 400 kg

Monitor : 26 inch color

Power Supply : 100•240V AC 50/60Hz 1,040W



SEGA Enterprises, Ltd.
2-12, Haneda 1-chome, Ota-ku, Tokyo 144, Japan
Tel.: (03) 743-7438 Fax: (03) 743-5539
Tlx.: J22357 SEGASTAR
Sega Enterprises, Inc. (U.S.A.)
2149 Paragon Drive, San Jose, CA 95131
U.S.A. Tel.: (408) 435-0201 Fax: (408) 435-0294
Sega Europe Limited
410-420 Rayners Lane, Pinner, Middx, HA5
5DY, England Tel.: 01-868-2331 Tlx.: 893501
SEGAUK G Fax: 01-429-3137

Design and specifications subject to change without notice OD-3102-6

DISTRIBUTED BY:

